

À des fins de recherche uniquement

Anticorps Polyclonal de lapin anti-Coilin



Numéro de catalogue: 10967-1-AP

15 Publications

Informations de base

Numéro de catalogue: 10967-1-AP	Numéro d'acquisition GenBank: BC010385	Méthode de purification: Purification par affinité contre l'antigène
Taille: 150ul , Concentration: 800 µg/ml by Nanodrop;	Identification du gène (NCBI): 8161	Dilutions recommandées: WB 1:5000-1:50000 IP 0.5-4.0 ug for IP and 1:5000-1:50000 for WB
Hôte: Lapin	Nom complet: coilin	IHC 1:20-1:200
Isotype: IgG	MW calculé: 576 aa, 63 kDa	IF 1:50-1:500
Immunogen Catalog Number: AG1416	MW observés: 80 kDa	

Applications

Applications testées:
FC, IF, IHC, IP, WB, ELISA

Demandes citées:
CoIP, IF, IHC, WB

Spécificité de l'espèce:
Humain

Espèces citées:
Humain, souris

Contrôles positifs:

WB : cellules HEK-293, cellules Jurkat, cellules K-562, tissu cérébral humain

IP : cellules HEK-293,

IHC : tissu de cancer de la prostate humain, tissu testiculaire humain

IF : cellules HeLa,

Remarque-IHC: il est suggéré de démasquer l'antigène avec un tampon de TE buffer pH 9,0; (*) À défaut, le démasquage de l'antigène peut être effectué avec un tampon citrate pH 6,0.

Informations générales

The nuclear coiled body(CBs) and nuclear structures known as gems contain high concentrations of the survival motor neurons (SMN) protein complex. CBs and gems often colocalize, and communication between them is mediated by COIL. COIL is a component of the CBS which are involved in the function or assembly/disassembly of nucleoplasmic snRNPs. During mitosis, CBs disassemble, coinciding with a mitotic-specific phosphorylation of p80 coilin, and symmetrical dimethylation of the COIL RG box motif is a molecular switch that determines whether the SMN complex forms gems or becomes incorporated into CBs

Publications notables

Autrice	Pubmed ID	Journal	Application
Andrea Pawellek	28884683	Elife	IF
Yuhong Zhang	34628513	J Mol Med (Berl)	WB,IF
Andrea Pawellek	25281741	J Biol Chem	IF

Stockage

Stockage:

Stocker à -20°C. Stable pendant un an après l'expédition.

Tampon de stockage:

PBS avec azoture de sodium à 0,02 % et glycérol à 50 % pH 7,3

L'aliquotage n'est pas nécessaire pour le stockage à -20C

*** Les 20ul contiennent 0,1% de BSA.

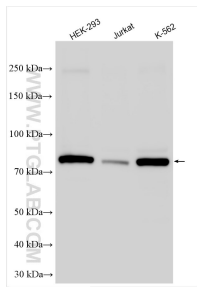
For technical support and original validation data for this product please contact:

T: 1 (888) 4PTGLAB (1-888-478-4522) (toll free in USA), or 1(312) 455-8498 (outside USA)

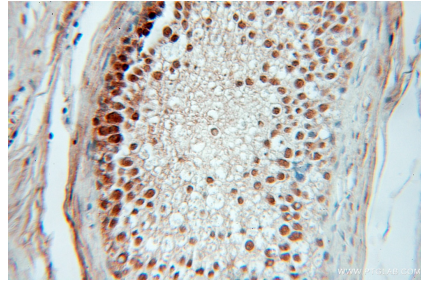
E: proteintech@ptglab.com
W: ptglab.com

This product is exclusively available under Proteintech Group brand and is not available to purchase from any other manufacturer.

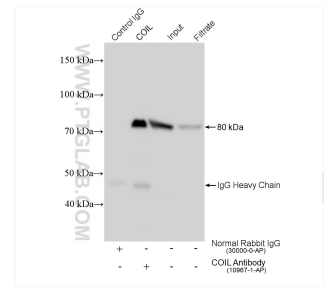
Données de validation sélectionnées



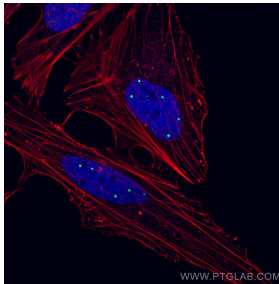
Various lysates were subjected to SDS PAGE followed by western blot with 10967-1-AP (Coilin antibody) at dilution of 1:15000 incubated at room temperature for 1.5 hours.



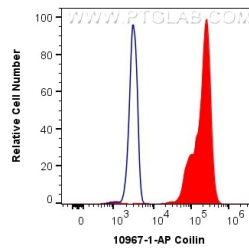
Immunohistochemical analysis of paraffin-embedded human prostate cancer using 10967-1-AP (Coilin antibody) at dilution of 1:100 (under 10x lens).



IP result of anti-Coilin (IP:10967-1-AP, 4ug; Detection:10967-1-AP 1:10000) with HEK-293 cells lysate 1400 ug.



Immunofluorescent analysis of (4% PFA) fixed HeLa cells using Coilin antibody (10967-1-AP) at dilution of 1:200 and CoralLite@488-Conjugated AffiniPure Goat Anti-Rabbit IgG(H+L), CL594-Phalloidin (red).



1X10⁶ HEK-293 cells were intracellularly stained with 0.4 ug Anti-Human Coilin (10967-1-AP) and CoralLite@488-Conjugated AffiniPure Goat Anti-Rabbit IgG(H+L) at dilution 1:1000 (red), or 0.4 ug Isotype Control. Cells were fixed and permeabilized with Transcription Factor Staining Buffer Kit (PF00011).