

À des fins de recherche uniquement

Anticorps Polyclonal de lapin anti-PABPC1,PABP



Numéro de catalogue: 10970-1-AP

Phare

17 Publications

Informations de base

Numéro de catalogue:

10970-1-AP

Taille:

150ul, Concentration: 500 µg/ml by Nanodrop;

Hôte:

Lapin

Isotype:

IgG

Immunogen Catalog Number:

AG1422

Numéro d'acquisition GenBank:

BC015958

Identification du gène (NCBI):

26986

Nom complet:

poly(A) binding protein, cytoplasmic 1

MW calculé

71 kDa

MW observés:

71 kDa

Méthode de purification:

Purification par affinité contre l'antigène

Dilutions recommandées:

WB 1:1000-1:5000

IP 0.5-4.0 µg for IP and 1:500-1:1000 for WB

IHC 1:20-1:200

IF 1:10-1:100

Applications

Applications testées:

FC, IF, IHC, IP, WB, ELISA

Demandes citées:

IF, IHC, IP, WB

Spécificité de l'espèce:

Humain, rat, souris

Espèces citées:

Humain, rat, souris

Remarque-IHC: il est suggéré de démasquer l'antigène avec un tampon de TE buffer pH 9,0; (*) À défaut, 'le démasquage de l'antigène peut être effectué avec un tampon citrate pH 6,0.

Contrôles positifs:

WB : cellules HCT 116, cellules A549, cellules HeLa, cellules HT-29, cellules MCF-7, cellules NCI-H1299, cellules PC-3, tissu testiculaire de rat, tissu testiculaire de souris

IP : tissu testiculaire de souris,

IHC : tissu pancréatique humain, tissu testiculaire humain

IF : cellules MCF-7,

Informations générales

The poly(A)-binding protein (PABP), which is found complexed to the 3-prime poly(A) tail of eukaryotic mRNA, is required for poly(A) shortening and translation initiation [PMID: 21989405]. Polyadenylate-binding protein 1 (PABPC1) is a cytoplasmic-nuclear shuttling protein important for protein translation initiation, and both RNA processing and stability. In the cytoplasm, PABPC1 binds to the 3' poly(A) tail of eukaryotic mRNAs through its RNA-recognition motifs (RRM) and interacts with the N-terminus of eIF4G, part of the eIF4F complex associated with the 5' cap structure [PMID:20009508, 17381337].

Publications notables

Autrice	Pubmed ID	Journal	Application
S Prpar Mihevc	27665936	Sci Rep	WB,IF
Rhea Nadkarni	36129453	J Exp Med	WB
Xiangui Meng	36436682	Cancer Lett	IHC

Stockage

Stockage:

Stocker à -20°C. Stable pendant un an après l'expédition.

Tampon de stockage:

PBS avec azoture de sodium à 0,02 % et glycérol à 50 % pH 7,3

L'aliquotage n'est pas nécessaire pour le stockage à -20C

*** Les 20ul contiennent 0,1% de BSA.

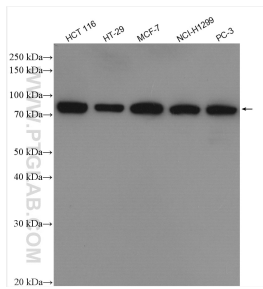
For technical support and original validation data for this product please contact:

T: 1 (888) 4PTGLAB (1-888-478-4522) (toll free in USA), or 1(312) 455-8498 (outside USA)

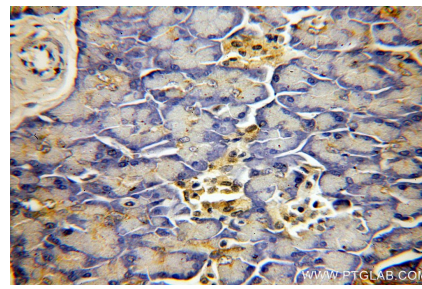
E: proteintech@ptglab.com
W: ptglab.com

This product is exclusively available under Proteintech Group brand and is not available to purchase from any other manufacturer.

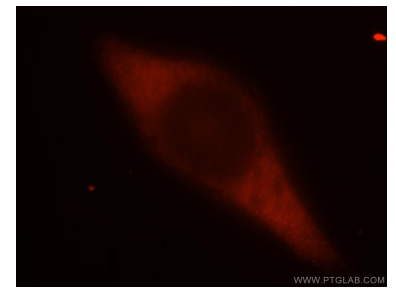
Données de validation sélectionnées



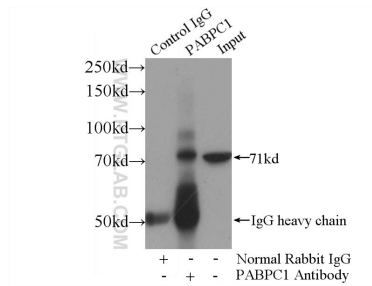
Various lysates were subjected to SDS PAGE followed by western blot with 10970-1-AP (PABPC1,PABP antibody) at dilution of 1:2500 incubated at room temperature for 1.5 hours.



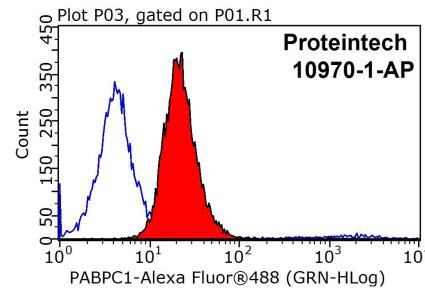
Immunohistochemical analysis of paraffin-embedded human pancreas using 10970-1-AP (PABPC1,PABP antibody) at dilution of 1:50 (under 40x lens).



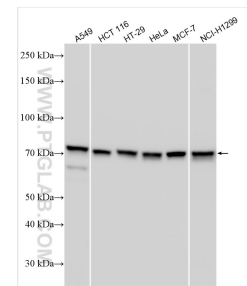
Immunofluorescent analysis of MCF-7 cells, using PABPC1 antibody 10970-1-AP at 1:25 dilution and Rhodamine-labeled goat anti-rabbit IgG (red).



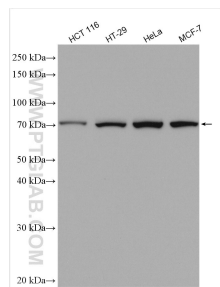
IP Result of anti-PABPC1,PABP (IP:10970-1-AP, 4ug; Detection:10970-1-AP 1:700) with mouse testis tissue lysate 4000ug.



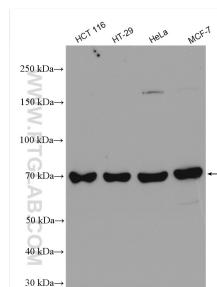
1X10⁶ MCF-7 cells were stained with 0.2ug PABPC1,PABP antibody (10970-1-AP, red) and control antibody (blue). Fixed with 90% MeOH blocked with 3% BSA (30 min). Alexa Fluor 488-conjugated AffiniPure Goat Anti-Rabbit IgG(H+L) with dilution 1:1000.



Various lysates were subjected to SDS PAGE followed by western blot with 10970-1-AP (PABPC1,PABP antibody) at dilution of 1:8000 incubated at room temperature for 1.5 hours.



Various lysates were subjected to SDS PAGE followed by western blot with 10970-1-AP (PABPC1,PABP antibody) at dilution of 1:6000 incubated at room temperature for 1.5 hours.



Various lysates were subjected to SDS PAGE followed by western blot with 10970-1-AP (PABPC1,PABP antibody) at dilution of 1:6000 incubated at room temperature for 1.5 hours.