

À des fins de recherche uniquement

Anticorps Polyclonal de lapin anti-CTBP1



Numéro de catalogue: 10972-1-AP

Phare

5 Publications

Informations de base

Numéro de catalogue:

10972-1-AP

Taille:

150ul, Concentration: 300 µg/ml by Nanodrop and 167 µg/ml by Bradford method using BSA as the standard;

Hôte:

Lapin

Isotype:

IgG

Immunogen Catalog Number:

AG1425

Numéro d'acquisition GenBank:

BC011655

Identification du gène (NCBI):

1487

Nom complet:

C-terminal binding protein 1

MW calculé

48 kDa

MW observés:

48 kDa

Méthode de purification:

Purification par affinité contre l'antigène

Dilutions recommandées:

WB 1:1000-1:8000

IP 0.5-4.0 ug for IP and 1:200-1:1000 for WB

IHC 1:50-1:500

IF 1:50-1:500

Applications

Applications testées:

FC, IF, IHC, IP, WB, ELISA

Demandes citées:

IF, WB

Spécificité de l'espèce:

Humain, souris

Espèces citées:

Humain, souris

Remarque-IHC: il est suggéré de démasquer l'antigène avec un tampon de TE buffer pH 9,0; (*) À défaut, 'le démasquage de l'antigène peut être 'effectué avec un tampon citrate pH 6,0.

Contrôles positifs:

WB : cellules HEK-293, cellules HepG2, cellules Jurkat, cellules NIH/3T3, cellules SH-SY5Y, tissu cérébral de souris, tissu de muscle squelettique de souris, tissu de thymus de souris

IP : tissu cérébral de souris,

IHC : tissu de cancer de la prostate humain,

IF : cellules HepG2,

Informations générales

CTBP1, also named as C-terminal-binding protein 1, is a 440 amino acid protein, which belongs to the D-isomer specific 2-hydroxyacid dehydrogenase family. CTBP1 is a cellular phosphoprotein that associates with various proteins and functions as a corepressor of transcription. CTBP1 and the related protein CTBP2 are characterized as C-terminal binding protein of adenovirus E1A, and they preferentially associate with the E1A via a 5-amino acid motif, PLDLS, to repress E1A induced oncogenesis and cellular transformation. CTBP1 is expressed from embryo to adult, but CTBP2 is mainly expressed during embryogenesis.

Publications notables

Autrice	Pubmed ID	Journal	Application
Lifang Li	28947780	Nat Commun	WB
Yang Yu	31636387	Oncogene	WB,IF
Kirthana Prabhakar	31338875	Mol Carcinog	WB

Stockage

Stockage:

Stocker à -20°C. Stable pendant un an après l'expédition.

Tampon de stockage:

PBS avec azoture de sodium à 0,02 % et glycérol à 50 % pH 7,3

L'aliquotage n'est pas nécessaire pour le stockage à -20C

*** Les 20ul contiennent 0,1% de BSA.

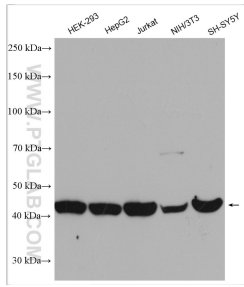
For technical support and original validation data for this product please contact:

T: 1 (888) 4PTGLAB (1-888-478-4522) (toll free in USA), or 1(312) 455-8498 (outside USA)

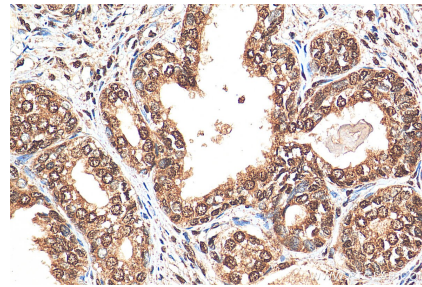
E: proteintech@ptglab.com
W: ptglab.com

This product is exclusively available under Proteintech Group brand and is not available to purchase from any other manufacturer.

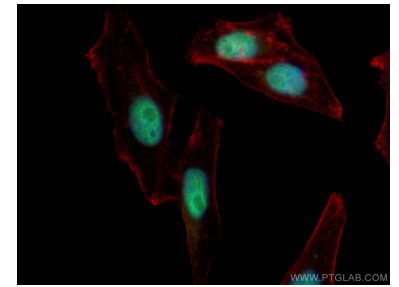
Données de validation sélectionnées



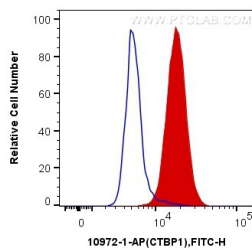
Various lysates were subjected to SDS PAGE followed by western blot with 10972-1-AP (CTBP1 antibody) at dilution of 1:4000 incubated at room temperature for 1.5 hours.



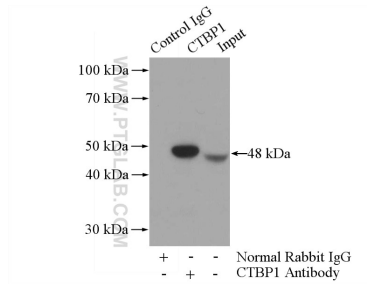
Immunohistochemical analysis of paraffin-embedded human prostate cancer tissue slide using 10972-1-AP (CTBP1 antibody) at dilution of 1:200 (under 40x lens). Heat mediated antigen retrieval with Tris-EDTA buffer (pH 9.0).



Immunofluorescent analysis of (4% PFA) fixed HepG2 cells using CTBP1 antibody (10972-1-AP) at dilution of 1:200 and CoraLite®488-Conjugated AffiniPure Goat Anti-Rabbit IgG(H+L), CL594-Phalloidin (red).



1X10⁶ HepG2 cells were intracellularly stained with 0.4 ug Anti-Human CTBP1 (10972-1-AP) and CoraLite®488-Conjugated AffiniPure Goat Anti-Rabbit IgG(H+L) at dilution 1:1000 (red), or 0.4 ug Control Antibody. Cells were fixed and permeabilized with Transcription Factor Staining Buffer Kit (PF00011).



IP Result of anti-CTBP1 (IP:10972-1-AP, 3ug; Detection:10972-1-AP 1:200) with mouse brain tissue lysate 4000ug.