

À des fins de recherche uniquement

# Anticorps Polyclonal de lapin anti-KLRG1



Numéro de catalogue: 10974-1-AP

2 Publications

## Informations de base

Numéro de catalogue:  
10974-1-AP

Taille:  
150ul, Concentration: 300 µg/ml by Nanodrop and 233 µg/ml by Bradford method using BSA as the standard;

Hôte:  
Lapin

Isotype:  
IgG

Immunogen Catalog Number:  
AG1407

Numéro d'acquisition GenBank:  
BC012621

Identification du gène (NCBI):  
10219

Nom complet:  
killer cell lectin-like receptor subfamily G, member 1

MW calculé

22 kDa

MW observés:

60 kDa

Méthode de purification:  
Purification par affinité contre l'antigène

Dilutions recommandées:  
WB 1:200-1:1000

## Applications

Applications testées:  
WB, ELISA

Demandes citées:  
IF

Spécificité de l'espèce:  
Humain

Espèces citées:  
Humain

Contrôles positifs:

WB : leucocyte de sang périphérique humain, cellules Raji

## Informations générales

KLRG1 (killer cell lectin-like receptor subfamily G, member 1) is a C-type lectin inhibitory receptor that contains an immunoreceptor tyrosine-based inhibitory motif (ITIM) in its cytoplasmic domain. KLRG1 is expressed by subsets of NK and T cells, existing both as a monomer and as a disulfide-linked homodimer (PMID: 10741410; 19604491). It is considered to be a cell differentiation marker for NK and T cells and is strongly induced by viral and other infections (PMID: 20373518). Through interactions with members of the cadherin family, KLRG1 plays an inhibitory role on NK- and T-cell function (PMID: 19009530; 20373518).

## Publications notables

Autrice	Pubmed ID	Journal	Application
Steven A Greenberg	31326977	Brain	IHC
Sinja Vogt	37280376	J Neurol	IHC,IF

## Stockage

Stockage:

Stocker à -20°C. Stable pendant un an après l'expédition.

Tampon de stockage:

PBS avec azote de sodium à 0,02 % et glycérol à 50 % pH 7,3

L'aliquote n'est pas nécessaire pour le stockage à -20C

\*\*\* Les 20ul contiennent 0,1% de BSA.

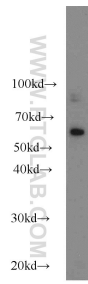
For technical support and original validation data for this product please contact:

T: 1 (888) 4PTGLAB (1-888-478-4522) (toll free in USA), or 1(312) 455-8498 (outside USA)

E: [proteintech@ptglab.com](mailto:proteintech@ptglab.com)  
W: [ptglab.com](http://ptglab.com)

This product is exclusively available under Proteintech Group brand and is not available to purchase from any other manufacturer.

## Données de validation sélectionnées



Human peripheral blood leukocytes were subjected to SDS PAGE followed by western blot with 10974-1-AP (KLRG1 antibody) at dilution of 1:200 incubated at room temperature for 1.5 hours.