

À des fins de recherche uniquement

# Anticorps Polyclonal de lapin anti-HSD17B2



Numéro de catalogue: 10978-1-AP

Phare

29 Publications

## Informations de base

Numéro de catalogue:

10978-1-AP

Taille:

150ul, Concentration: 287 µg/ml by Bradford method using BSA as the standard;

Hôte:

Lapin

Isotype:

IgG

Immunogen Catalog Number:

AG1411

Numéro d'acquisition GenBank:

BC009581

Identification du gène (NCBI):

3294

Nom complet:

hydroxysteroid (17-beta) dehydrogenase 2

MW calculé

43 kDa

MW observés:

35-40 kDa

Méthode de purification:

Purification par affinité contre l'antigène

Dilutions recommandées:

WB 1:1000-1:4000

IHC 1:20-1:200

## Applications

Applications testées:

IHC, WB, ELISA

Demandes citées:

IHC, WB

Spécificité de l'espèce:

Humain

Espèces citées:

Humain, rat, souris

**Remarque-IHC: il est suggéré de démasquer l'antigène avec un tampon de TE buffer pH 9,0; (\*) A défaut, 'le démasquage de l'antigène peut être effectué avec un tampon citrate pH 6,0.**

Contrôles positifs:

WB : cellules HepG2, cellules MCF-7, tissu placentaire humain

IHC : tissu de tumeur ovarienne humain,

## Informations générales

HSD17B2(Estradiol 17-beta-dehydrogenase 2) is also named as 17-beta-HSD 2,20-alpha-HSD,EDH17B2 and belongs to the short-chain dehydrogenases/reductases (SDR) family. Based on the pivotal role of HSD17B2 gene product in the estrogen metabolism pathway, it may be considered as a putative candidate gene that could possibly explain a fraction of the remaining familial breast cancer risk and it is unlikely to play a role as a high penetrance gene in breast cancer predisposition(PMID:18372405).

## Publications notables

Autrice	Pubmed ID	Journal	Application
Changjiang Liu	34544022	Ecotoxicol Environ Saf	WB
Takayoshi Inoue	21740958	Mol Cell Endocrinol	IHC
Lindsay J Collin	31671023	Acta Oncol	IHC

## Stockage

Stockage:

Stocker à -20°C. Stable pendant un an après l'expédition.

Tampon de stockage:

PBS avec azoture de sodium à 0,02 % et glycérol à 50 % pH 7,3

L'aliquotage n'est pas nécessaire pour le stockage à -20C

\*\*\* Les 20ul contiennent 0,1% de BSA.

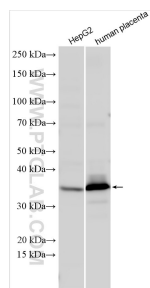
For technical support and original validation data for this product please contact:

T: 1 (888) 4PTGLAB (1-888-478-4522) (toll free in USA), or 1(312) 455-8498 (outside USA)

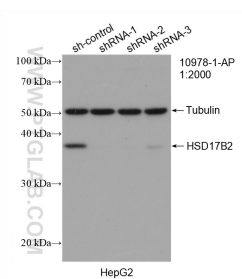
E: proteintech@ptglab.com  
W: ptglab.com

This product is exclusively available under Proteintech Group brand and is not available to purchase from any other manufacturer.

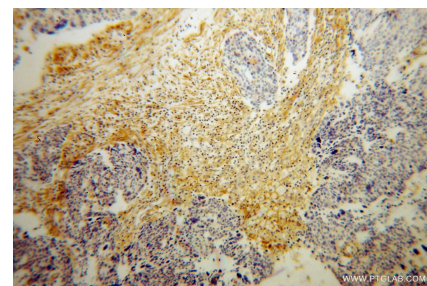
## Données de validation sélectionnées



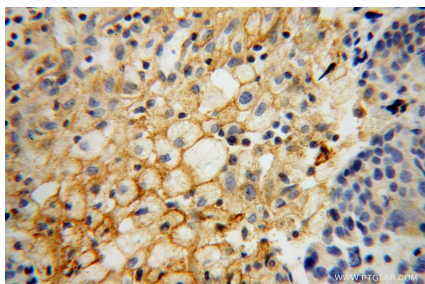
Various lysates were subjected to SDS PAGE followed by western blot with 10978-1-AP (HSD17B2 antibody) at dilution of 1:2000 incubated at room temperature for 1.5 hours.



WB result of HSD17B2 antibody (10978-1-AP; 1:2000; incubated at room temperature for 1.5 hours) with sh-Control and sh-HSD17B2 transfected HepG2 cells.



Immunohistochemical analysis of paraffin-embedded human ovary tumor using 10978-1-AP (HSD17B2 antibody) at dilution of 1:100 (under 10x lens).



Immunohistochemical analysis of paraffin-embedded human ovary tumor using 10978-1-AP (HSD17B2 antibody) at dilution of 1:100 (under 40x lens).