

À des fins de recherche uniquement

Anticorps Polyclonal de lapin anti-Fc Epsilon RI Alpha



Numéro de catalogue: 10980-1-AP

7 Publications

Informations de base

Numéro de catalogue: 10980-1-AP	Numéro d'acquisition GenBank: BC015195	Méthode de purification: Purification par affinité contre l'antigène
Taille: 150ul , Concentration: 350 µg/ml by Nanodrop;	Identification du gène (NCBI): 2205	Dilutions recommandées: WB 1:1000-1:4000
Hôte: Lapin	Nom complet: Fc fragment of IgE, high affinity I, receptor for; alpha polypeptide	
Isotype: IgG	MW calculé: 30 kDa	
Immunogen Catalog Number: AG1398	MW observés: 55-70 kDa	

Applications

Applications testées: WB, ELISA	Contrôles positifs: WB : tissu splénique de rat, cellules RAW 264.7, tissu splénique humain
Demandes citées: IF, IHC, WB	
Spécificité de l'espèce: Humain, rat, souris	
Espèces citées: Humain, souris	

Informations générales

Fc fragment of IgE, high affinity I, receptor for, alpha polypeptide, also known as high affinity immunoglobulin epsilon receptor subunit alpha, FCER1A and FCE1A, is a single-pass type I membrane protein which contains 2 immunoglobulin-like domains. FCER1A is a subunit of the IgE receptor, which is composed of one glycosylated alpha (FCER1A), one beta (FCER1B), and two gamma (FCER1G) subunits. The high affinity IgE receptor plays a central role in allergic disease, coupling allergen and mast cells to initiate the inflammatory and immediate hypersensitivity responses that are characteristic of disorders such as hay fever and asthma. The calculated molecular weight of FCER1A is 30 kDa, the 55- to 70-kDa bands detected by this antibody are probably caused by heterogeneous glycosylation (PMID: 11344350; 12671054).

Publications notables

Autrice	Pubmed ID	Journal	Application
Yunsheng Liang	31251950	J Allergy Clin Immunol	WB
Hongmei Zhao	34158869	Theranostics	WB
Chi Geng	35108660	Transl Res	WB

Stockage

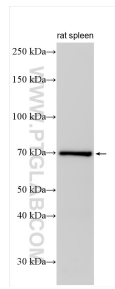
Stockage:
Stocker à -20°C. Stable pendant un an après l'expédition.
Tampon de stockage:
PBS avec azoture de sodium à 0,02 % et glycérol à 50 % pH 7,3
L'aliquotage n'est pas nécessaire pour le stockage à -20C

*** Les 20ul contiennent 0,1% de BSA.

For technical support and original validation data for this product please contact:
T: 1 (888) 4PTGLAB (1-888-478-4522) (toll free in USA), or 1(312) 455-8498 (outside USA)
E: proteintech@ptglab.com
W: ptglab.com

This product is exclusively available under Proteintech Group brand and is not available to purchase from any other manufacturer.

Données de validation sélectionnées



rat spleen tissue was subjected to SDS PAGE followed by western blot with 10980-1-AP (Fc Epsilon RI Alpha antibody) at dilution of 1:2000 incubated at room temperature for 1.5 hours.