

À des fins de recherche uniquement

Anticorps Polyclonal de lapin anti-MRPS22



Numéro de catalogue: 10984-1-AP

18 Publications

Informations de base

Numéro de catalogue:
10984-1-AP

Taille:
150ul , Concentration: 400 µg/ml by Nanodrop and 240 µg/ml by Bradford method using BSA as the standard;

Hôte:
Lapin

Isotype:
IgG

Immunogen Catalog Number:
AG1421

Numéro d'acquisition GenBank:
BC009296

Identification du gène (NCBI):
56945

Nom complet:
mitochondrial ribosomal protein S22

MW calculé
41 kDa

MW observés:
38 kDa

Méthode de purification:
Purification par affinité contre l'antigène

Dilutions recommandées:
WB 1:200-1:1000
IP 0.5-4.0 ug for IP and 1:200-1:1000 for WB
IHC 1:20-1:200

Applications

Applications testées:
IHC, IP, WB, ELISA

Demandes citées:
WB

Spécificité de l'espèce:
Humain, rat, souris

Espèces citées:
Humain, souris

Remarque-IHC: il est suggéré de démasquer l'antigène avec un tampon de TE buffer pH 9,0; (*) A défaut, 'le démasquage de l'antigène peut être 'effectué avec un tampon citrate pH 6,0.

Contrôles positifs:

WB : cellules Jurkat, tissu hépatique de souris, tissu splénique de rat, tissu splénique de souris

IP : cellules Jurkat,

IHC : tissu de cancer du sein humain,

Informations générales

MRPS22, also named as C3orf5, RPMS22 and S22mt, is a component of the mitochondrial ribosome small subunit (28S) which comprises a 12S rRNA and about 30 distinct proteins. Defects in MRPS22 are the cause of combined oxidative phosphorylation deficiency type 5 (COXP5). MRPS22 is a 360-amino-acid protein that has been found in a limited number of species, having no ortholog in fungi or prokaryotes. The exact location of MRPS22 in the three dimensional structure of the ribosome and its exact function are currently unknown. Recently, a MRPS22 defect was shown to strongly hamper assembly of the small ribosomal subunit, whereas assembly of the large subunit and part of the small subunit were only mildly affected.(PMID:21189481)

Publications notables

Autrice	Pubmed ID	Journal	Application
Christopher Lowden	34525369	Cell Rep	WB
Joachim M Gerhold	26478270	Sci Rep	WB
Olga Zurita Rendón	24838397	Hum Mol Genet	WB

Stockage

Stockage:

Stocker à -20°C. Stable pendant un an après l'expédition.

Tampon de stockage:

PBS avec azoture de sodium à 0,02 % et glycérol à 50 % pH 7,3

L'aliquoteage n'est pas nécessaire pour le stockage à -20C

*** Les 20ul contiennent 0,1% de BSA.

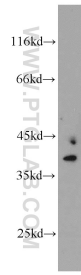
For technical support and original validation data for this product please contact:

T: 1 (888) 4PTGLAB (1-888-478-4522) (toll free in USA), or 1(312) 455-8498 (outside USA)

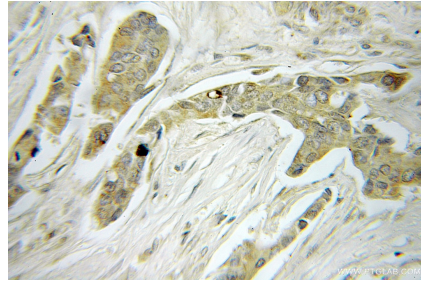
E: proteintech@ptglab.com
W: ptglab.com

This product is exclusively available under Proteintech Group brand and is not available to purchase from any other manufacturer.

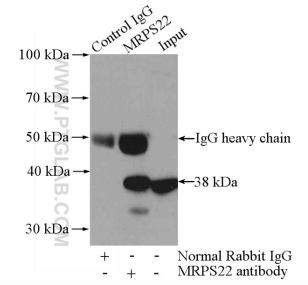
Données de validation sélectionnées



Jurkat cells were subjected to SDS PAGE followed by western blot with 10984-1-AP (MRPS22 antibody) at dilution of 1:300 incubated at room temperature for 1.5 hours.



Immunohistochemical analysis of paraffin-embedded human breast cancer using 10984-1-AP (MRPS22 antibody) at dilution of 1:50 (under 10x lens).



IP Result of anti-MRPS22 (IP:10984-1-AP, 4ug; Detection:10984-1-AP 1:300) with Jurkat cells lysate 2400ug.