

À des fins de recherche uniquement

# Anticorps Polyclonal de lapin anti-CSNK2A1



Numéro de catalogue: 10992-1-AP

Phare

20 Publications

## Informations de base

Numéro de catalogue:  
10992-1-AP

Taille:  
150ul, Concentration: 700 µg/ml by  
Nanodrop;

Hôte:  
Lapin

Isotype:  
IgG

Immunogen Catalog Number:  
AG1452

Numéro d'acquisition GenBank:  
BC011668

Identification du gène (NCBI):  
1457

Nom complet:  
casein kinase 2, alpha 1 polypeptide

MW calculé  
45 kDa

MW observés:  
40-45 kDa

Méthode de purification:  
Purification par affinité contre  
l'antigène

Dilutions recommandées:  
WB 1:2000-1:8000  
IP 0.5-4.0 µg for IP and 1:500-1:2000  
for WB  
IHC 1:50-1:500  
IF 1:50-1:500

## Applications

Applications testées:  
IF, IHC, IP, WB, ELISA

Demandes citées:  
CoIP, IF, IHC, IP, WB

Spécificité de l'espèce:  
Humain, rat, souris

Espèces citées:  
Humain, souris

Contrôles positifs:

WB : cellules PC-3, cellules A431, cellules K-562,  
cellules NIH/3T3, cellules Raji

IP : cellules HeLa,

IHC : tissu de cancer du sein humain, tissu de cancer du  
côlon humain

IF : cellules HeLa,

**Remarque-IHC: il est suggéré de démasquer  
l'antigène avec un tampon de TE buffer pH  
9,0; (\*) À défaut, le démasquage de  
l'antigène peut être effectué avec un  
tampon citrate pH 6,0.**

## Informations générales

CSNK2A1 (Casein kinase II subunit alpha) is also named as CK2A1 and belongs to the CK2 subfamily. The CSNK2A1 gene contains 8 exons whose sequences comprise bases 102 to 824 of the coding region of the human casein kinase II alpha subunit. Casein kinase II is a ubiquitous protein-serine/threonine kinase in eukaryotic cells that catalyzes the phosphorylation of many protein substrates and has been regarded as a second-messenger-independent protein kinase. This enzyme is composed of an  $\alpha$  subunit (37 to 44 kDa) and a  $\beta$  subunit (24 to 28 kDa) and exists as an  $\alpha 2\beta 2$  tetramer (PMID:1448100). Casein kinase 2 has been found to be increased at protein level and up-regulated at the level of enzyme activity in the majority of cancers. However, elevated levels of casein kinase 2 are present in certain normal organs such as brain and testes.

## Publications notables

| Autrice      | Pubmed ID | Journal             | Application |
|--------------|-----------|---------------------|-------------|
| C Shu        | 36306106  | J Endocrinol Invest | WB, IP      |
| Xuehui Li    | 34756889  | J Biol Chem         | IP          |
| Xingtang Niu | 32433772  | J Burn Care Res     | WB          |

## Stockage

Stockage:

Stocker à -20°C. Stable pendant un an après l'expédition.

Tampon de stockage:

PBS avec azoture de sodium à 0,02 % et glycérol à 50 % pH 7,3

L'aliquotage n'est pas nécessaire pour le stockage à -20C

\*\*\* Les 20ul contiennent 0,1% de BSA.

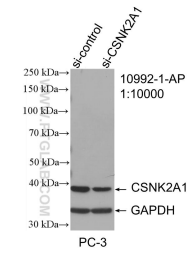
For technical support and original validation data for this product please contact:

T: 1 (888) 4PTGLAB (1-888-478-4522) (toll free  
in USA), or 1(312) 455-8498 (outside USA)

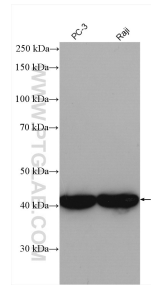
E: proteintech@ptglab.com  
W: ptglab.com

This product is exclusively available under Proteintech Group brand and is not available to purchase from any other manufacturer.

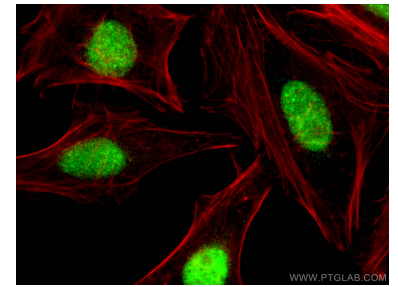
## Données de validation sélectionnées



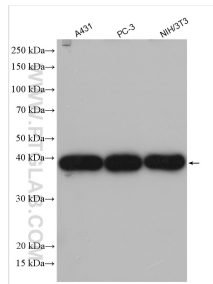
WB result of CSNK2A1 antibody (10992-1-AP; 1:10000; incubated at room temperature for 1.5 hours) with sh-Control and sh-CSNK2A1 transfected PC-3 cells.



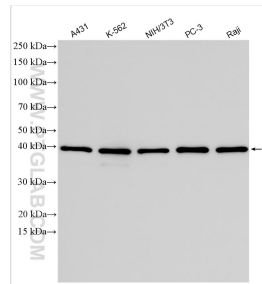
Various lysates were subjected to SDS PAGE followed by western blot with 10992-1-AP (CSNK2A1 antibody) at dilution of 1:3000 incubated at room temperature for 1.5 hours.



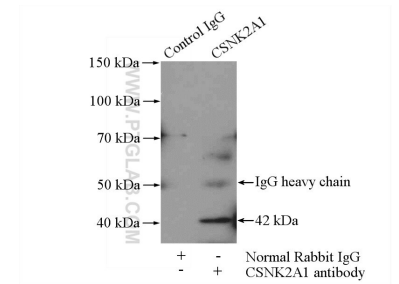
Immunofluorescent analysis of (4% PFA) fixed HeLa cells using 10992-1-AP (CSNK2A1 antibody), at dilution of 1:100 and CoraLite@488-Conjugated AffiniPure Goat Anti-Rabbit IgG(H+L). Phalloidine stains the F-actin.



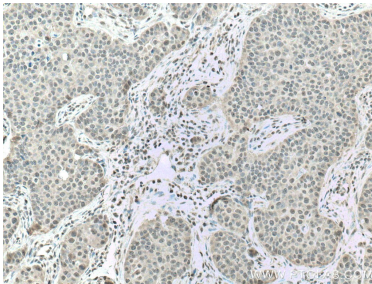
Various lysates were subjected to SDS PAGE followed by western blot with 10992-1-AP (CSNK2A1 antibody) at dilution of 1:6000 incubated at room temperature for 1.5 hours.



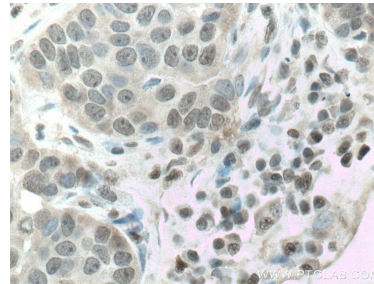
Various lysates were subjected to SDS PAGE followed by western blot with 10992-1-AP (CSNK2A1 antibody) at dilution of 1:10000 incubated at room temperature for 1.5 hours.



IP Result of anti-CSNK2A1 (IP:10992-1-AP, 4ug; Detection:10992-1-AP 1:1000) with HeLa cells lysate 2800ug.



Immunohistochemical analysis of paraffin-embedded human breast cancer tissue slide using 10992-1-AP (CSNK2A1 antibody) at dilution of 1:200 (under 10x lens). Heat mediated antigen retrieval with Tris-EDTA buffer (pH 9.0).



Immunohistochemical analysis of paraffin-embedded human breast cancer tissue slide using 10992-1-AP (CSNK2A1 antibody) at dilution of 1:200 (under 40x lens). Heat mediated antigen retrieval with Tris-EDTA buffer (pH 9.0).