

À des fins de recherche uniquement

# Anticorps Polyclonal de lapin anti-ATP50



Numéro de catalogue: 10994-1-AP

7 Publications

## Informations de base

|  |   |  |
|--|---|--|
| <b>Numéro de catalogue:</b><br>10994-1-AP                      | <b>Numéro d'acquisition GenBank:</b><br>BC021233  | <b>Méthode de purification:</b><br>Purification par affinité contre l'antigène |
| <b>Taille:</b><br>150ul, Concentration: 900 µg/ml by Nanodrop; | <b>Identification du gène (NCBI):</b><br>539  | <b>Dilutions recommandées:</b><br>WB 1:500-1:3000<br>IHC 1:50-1:500            |
| <b>Hôte:</b><br>Lapin  | <b>Nom complet:</b><br>ATP synthase, H <sup>+</sup> transporting, mitochondrial F1 complex, O subunit |  |
| <b>Isotype:</b><br>IgG   | <b>MW calculé:</b><br>23 kDa  |  |
| <b>Immunogen Catalog Number:</b><br>AG1458                     | <b>MW observés:</b><br>23-25 kDa  |  |

## Applications

### Applications testées:

FC, IHC, WB, ELISA

### Demandes citées:

IHC, WB

### Spécificité de l'espèce:

Humain, rat, souris

### Espèces citées:

Humain, souris

### Contrôles positifs:

**WB :** cellules A549, cellules Caco-2, cellules HCT116, cellules HEK-293, cellules HeLa, cellules HepG2, tissu cardiaque de souris, tissu de côlon de souris, tissu hépatique de souris, tissu placentaire de souris

**IHC :** tissu de cancer du poumon humain, tissu cardiaque humain, tissu de cancer du côlon humain, tissu testiculaire humain

**Remarque-IHC: il est suggéré de démasquer l'antigène avec un tampon de TE buffer pH 9,0; (\*) À défaut, le démasquage de l'antigène peut être effectué avec un tampon citrate pH 6,0.**

## Informations générales

ATP50(ATP synthase subunit O, mitochondrial) is also named as ATPO, OSCP and belongs to the ATPase delta chain family. The gene encodes the oligomycin sensitivity-conferring protein (OSCP) of ATP synthase. The predicted polypeptide is 213 amino acids long with more than 80% identity to the bovine and mouse homologs and it is expressed at highest levels in muscle and heart by the northern blot(PMID:7490082). Many studies have indicated that mitochondrial dysfunction is central to the development of most age-related human diseases including neurodegenerative diseases, cancer, and type 2 diabetes.

## Publications notables

| Autrice             | Pubmed ID | Journal         | Application |
|---------------------|-----------|-----------------|-------------|
| Robert Wiebringhaus | 34885151  | Cancers (Basel) | IHC         |
| Yingyan Han         | 27239088  | Dis Markers     | WB          |
| Peiyong Li          | 27313751  | Oncol Lett      |             |

## Stockage

### Stockage:

Stocker à -20°C. Stable pendant un an après l'expédition.

### Tampon de stockage:

PBS avec azoture de sodium à 0,02 % et glycérol à 50 % pH 7,3

L'aliquotage n'est pas nécessaire pour le stockage à -20C

\*\*\* Les 20ul contiennent 0,1% de BSA.

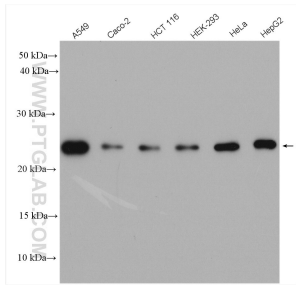
For technical support and original validation data for this product please contact:

T: 1 (888) 4PTGLAB (1-888-478-4522) (toll free in USA), or 1(312) 455-8498 (outside USA)

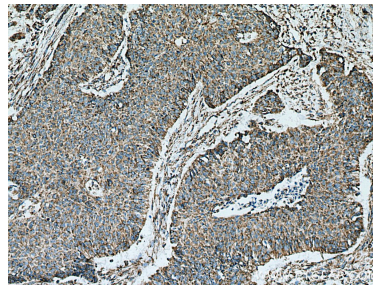
E: [proteintech@ptglab.com](mailto:proteintech@ptglab.com)  
W: [ptglab.com](http://ptglab.com)

This product is exclusively available under Proteintech Group brand and is not available to purchase from any other manufacturer.

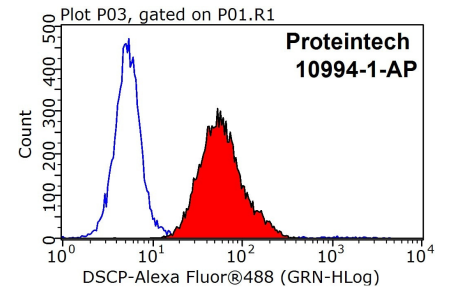
## Données de validation sélectionnées



Various lysates were subjected to SDS PAGE followed by western blot with 10994-1-AP (ATP50 antibody) at dilution of 1:1500 incubated at room temperature for 1.5 hours.



Immunohistochemical analysis of paraffin-embedded human lung cancer tissue slide using 10994-1-AP (ATP50 antibody) at dilution of 1:200 (under 10x lens). Heat mediated antigen retrieval with Tris-EDTA buffer (pH 9.0).



1X10<sup>6</sup> HepG2 cells were stained with 0.2ug OSCP antibody (10994-1-AP, red) and control antibody (blue). Fixed with 90% MeOH blocked with 3% BSA (30 min). Alexa Fluor 488-conjugated AffiniPure Goat Anti-Rabbit IgG(H+L) with dilution 1:1000.