

À des fins de recherche uniquement

Anticorps Polyclonal de lapin anti-RPL3



Numéro de catalogue: 11005-1-AP

Phare

8 Publications

Informations de base

Numéro de catalogue:

11005-1-AP

Taille:

150ul, Concentration: 600 µg/ml by Nanodrop;

Hôte:

Lapin

Isotype:

IgG

Immunogen Catalog Number:

AG1436

Numéro d'acquisition GenBank:

BC012786

Identification du gène (NCBI):

6122

Nom complet:

ribosomal protein L3

MW calculé

46/27 kDa

MW observés:

46 kDa

Méthode de purification:

Purification par affinité contre l'antigène

Dilutions recommandées:

WB 1:2000-1:16000

IP 0.5-4.0 ug for IP and 1:500-1:1000 for WB

IHC 1:50-1:500

IF 1:50-1:500

Applications

Applications testées:

IF, IHC, IP, WB, ELISA

Demandes citées:

IF, IHC, WB

Spécificité de l'espèce:

Humain, souris

Espèces citées:

Humain, souris

Contrôles positifs:

WB : cellules Jurkat, cellules HeLa, cellules Raji, tissu placentaire humain, tissu rénal de souris, tissu rénal humain

IP : tissu rénal de souris,

IHC : tissu de cancer de la prostate humain,

IF : cellules HepG2,

Remarque-IHC: il est suggéré de démasquer l'antigène avec un tampon de TE buffer pH 9,0; (*) À défaut, le démasquage de l'antigène peut être effectué avec un tampon citrate pH 6,0.

Informations générales

Ribosomes, the complexes that catalyze protein synthesis, consist of a small 40S subunit and a large 60S subunit. Together these subunits are composed of 4 RNA species and approximately 80 structurally distinct proteins. RPL3, also named as TARBP-B and MGC104284, belongs to the ribosomal protein L3P family. This protein is a component of the 60S subunit. It can bind to the HIV-1 TAR mRNA, and it has been suggested that the protein contributes to tat-mediated transactivation. As is typical for genes encoding ribosomal proteins, there are multiple processed pseudogenes of this gene dispersed through the genome. This is a rabbit polyclonal antibody raised against the C terminus of human RPL3.

Publications notables

Autrice	Pubmed ID	Journal	Application
Elizabeth I Vink	34725147	Proc Natl Acad Sci U S A	WB
Kai Ma	35637200	Cell Discov	WB
Xue Zhang	32531052	Carcinogenesis	IHC

Stockage

Stockage:

Stocker à -20°C. Stable pendant un an après l'expédition.

Tampon de stockage:

PBS avec azoture de sodium à 0,02 % et glycérol à 50 % pH 7,3

L'aliquotage n'est pas nécessaire pour le stockage à -20C

*** Les 20ul contiennent 0,1% de BSA.

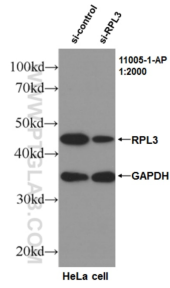
For technical support and original validation data for this product please contact:

T: 1 (888) 4PTGLAB (1-888-478-4522) (toll free in USA), or 1(312) 455-8498 (outside USA)

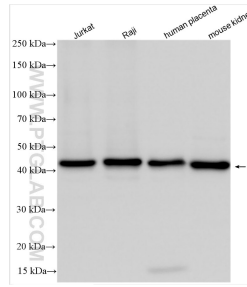
E: proteintech@ptglab.com
W: ptglab.com

This product is exclusively available under Proteintech Group brand and is not available to purchase from any other manufacturer.

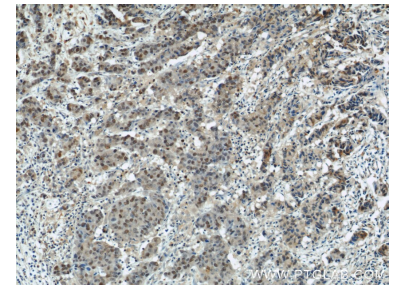
Données de validation sélectionnées



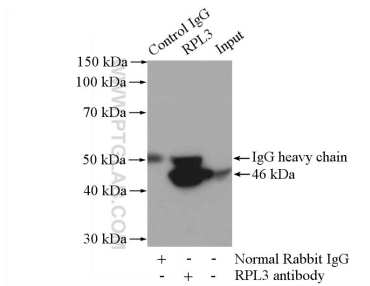
WB result of RPL3 antibody (11005-1-AP, 1:2000) with si-control and si-RPL3 transfected HeLa cells..



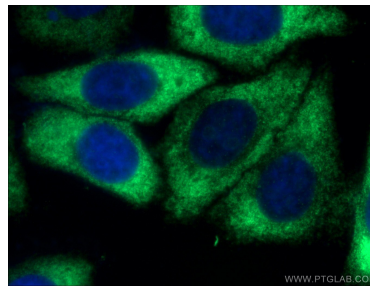
Various lysates were subjected to SDS PAGE followed by western blot with 11005-1-AP (RPL3 antibody) at dilution of 1:8000 incubated at room temperature for 1.5 hours.



Immunohistochemical analysis of paraffin-embedded human prostate cancer using 11005-1-AP (RPL3 antibody) at dilution of 1:50 (under 10x lens).



IP Result of anti-RPL3 (IP:11005-1-AP, 4ug; Detection:11005-1-AP 1:500) with mouse kidney tissue lysate 4000ug.



Immunofluorescent analysis of (-20°C Ethanol) fixed HepG2 cells using 11005-1-AP (RPL3 antibody) at dilution of 1:50 and Alexa Fluor 488-conjugated AffiniPure Goat Anti-Rabbit IgG(H+L).