

À des fins de recherche uniquement

Anticorps Polyclonal de lapin anti-PPAN



Numéro de catalogue: 11006-1-AP

Phare

7 Publications

Informations de base

Numéro de catalogue:
11006-1-AP

Taille:
150ul, Concentration: 650 µg/ml by
Nanodrop and 327 µg/ml by Bradford
method using BSA as the standard;

Hôte:
Lapin

Isotype:
IgG

Immunogen Catalog Number:
AG1419

Numéro d'acquisition GenBank:
BC009833

Identification du gène (NCBI):
56342

Nom complet:
peter pan homolog (Drosophila)

MW calculé
53 kDa

MW observés:
55-58 kDa

Méthode de purification:
Purification par affinité contre
l'antigène

Dilutions recommandées:
WB 1:1000-1:4000

Applications

Applications testées:
WB, ELISA

Demandes citées:
IF, IHC, IP, WB

Spécificité de l'espèce:
Humain, rat, souris

Espèces citées:
Humain, souris, xénope

Contrôles positifs:

WB : cellules HeLa, tissu cardiaque de rat, tissu
cardiaque de souris, tissu hépatique de rat

Informations générales

PPAN (or SSF, SSF1 or SSF2) gene is widely expressed, and encodes peter pan homolog protein which may be localized in nucleus. Two isoforms are produced through alternative splicing. So far the characterization of this protein is largely unknown, multiple phosphorylation sites has been revealed based on high-throughput phosphorylation analysis. This antibody is raised against the C-terminal of human PPAN and recognize bands around 55 kDa.

Publications notables

| Autrice | Pubmed ID | Journal | Application |
|--------------------|-----------|-------------|-------------|
| Tecza Aleksandra A | 21770895 | Biol Cell | WB,IHC |
| Astrid S Pfister | 25759387 | J Biol Chem | WB, IF |
| Bugner Verena V | 21558383 | Development | WB,IF,IP |

Stockage

Stockage:

Stocker à -20°C. Stable pendant un an après l'expédition.

Tampon de stockage:

PBS avec azoture de sodium à 0,02 % et glycérol à 50 % pH 7,3

L'aliquotage n'est pas nécessaire pour le stockage à -20C

*** Les 20ul contiennent 0,1% de BSA.

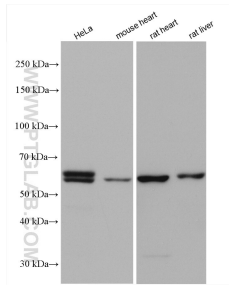
For technical support and original validation data for this product please contact:

T: 1 (888) 4PTGLAB (1-888-478-4522) (toll free
in USA), or 1(312) 455-8498 (outside USA)

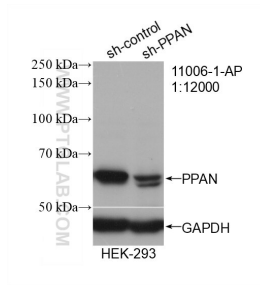
E: proteintech@ptglab.com
W: ptglab.com

This product is exclusively available under Proteintech Group brand and is not available to purchase from any other manufacturer.

Données de validation sélectionnées



Various lysates were subjected to SDS PAGE followed by western blot with 11006-1-AP (PPAN antibody) at dilution of 1:2000 incubated at room temperature for 1.5 hours.



WB result of PPAN antibody (11006-1-AP; 1:12000; incubated at room temperature for 1.5 hours) with sh-Control and sh-PPAN transfected HEK-293 cells.