

À des fins de recherche uniquement

# Anticorps Polyclonal de lapin anti-WBS15/LAT2



Numéro de catalogue: 11008-1-AP

## Informations de base

<b>Numéro de catalogue:</b> 11008-1-AP	<b>Numéro d'acquisition GenBank:</b> BC009204	<b>Méthode de purification:</b> Purification par affinité contre l'antigène
<b>Taille:</b> 150ul , Concentration: 750 µg/ml by Nanodrop and 333 µg/ml by Bradford method using BSA as the standard;	<b>Identification du gène (NCBI):</b> 7462	<b>Dilutions recommandées:</b> WB 1:1000-1:4000
<b>Hôte:</b> Lapin	<b>Nom complet:</b> linker for activation of T cells family, member 2	
<b>Isotype:</b> IgG	<b>MW calculé:</b> 27 kDa	
<b>Immunogen Catalog Number:</b> AG1454	<b>MW observés:</b> 27-30 kDa	

## Applications

<b>Applications testées:</b> WB, ELISA	<b>Contrôles positifs:</b> WB : cellules Raji, tissu cérébral humain, tissu placentaire humain
<b>Spécificité de l'espèce:</b> Humain, souris	

## Informations générales

WBS15, also named as LAB, NTAL, WBSCR15, WBSCR5 and LAT2 (Linker for activation of T-cells family member 2; not SLC7A8/LAT2), is involved in FCER1 (high affinity immunoglobulin epsilon receptor)-mediated signaling in mast and myeloid cells. WBS15 is involved in BCR (B-cell antigen receptor)-mediated signaling in B-cells. It is located in the Williams-Beuren syndrome (WBS) critical region. WBS15 has two isoform with MW 27-30 kDa and 12 kDa.

## Stockage

**Stockage:**  
Stocker à -20°C. Stable pendant un an après l'expédition.  
**Tampon de stockage:**  
PBS avec azoture de sodium à 0,02 % et glycérol à 50 % pH 7,3  
L'aliquotage n'est pas nécessaire pour le stockage à -20C

\*\*\* Les 20ul contiennent 0,1% de BSA.

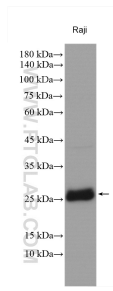
For technical support and original validation data for this product please contact:

T: 1 (888) 4PTGLAB (1-888-478-4522) (toll free in USA), or 1(312) 455-8498 (outside USA)

E: proteintech@ptglab.com  
W: ptglab.com

This product is exclusively available under Proteintech Group brand and is not available to purchase from any other manufacturer.

## Données de validation sélectionnées



Raji lysates were subjected to SDS PAGE followed by western blot with 11008-1-AP (WBS15/LAT2 antibody) at dilution of 1:2000 incubated at room temperature for 1.5 hours.