

À des fins de recherche uniquement

Anticorps Polyclonal de lapin anti-Midkine



Numéro de catalogue: 11009-1-AP

Phare

9 Publications

Informations de base

Numéro de catalogue:

11009-1-AP

Taille:

150ul, Concentration: 350 µg/ml by Nanodrop;

Hôte:

Lapin

Isotype:

IgG

Immunogen Catalog Number:

AG1465

Numéro d'acquisition GenBank:

BC011704

Identification du gène (NCBI):

4192

Nom complet:

midkine (neurite growth-promoting factor 2)

MW calculé

16 kDa

MW observés:

16 kDa

Méthode de purification:

Purification par affinité contre l'antigène

Dilutions recommandées:

WB 1:500-1:1000

Applications

Applications testées:

WB, ELISA

Demandes citées:

IF, IHC, WB

Spécificité de l'espèce:

Humain, souris

Espèces citées:

Humain, rat, souris

Contrôles positifs:

WB : tissu embryonnaire de souris, cellules COLO 320, cellules SH-SY5Y

Informations générales

Midkine is a heparin-binding growth factor identified over 20 years ago and enhances the survival, migration and many other activities of target cells. Midkine is rich in both basic amino acids and cysteine, and is not related to most other growth factors/cytokines. It is strongly expressed during embryonic periods, especially at the midgestation stage, and plays important roles in development, especially in neurogenesis. Midkine expression in adult tissue is generally weak or undetectable, and it is induced upon injury and exerts many activities related to tissue repair. The biological activities of midkine in malignant tumors include proliferation, angiogenesis, invasion and metastasis. Various cancers express significantly higher levels of the midkine protein in early stage tumor tissues than in adjacent normal tissue.

Publications notables

Autrice	Pubmed ID	Journal	Application
Beiquan Hu	34556138	Cancer Cell Int	WB
Federica Morani	33800494	Int J Mol Sci	WB
Luyu Zheng	35747815	Front Oncol	WB

Stockage

Stockage:

Stocker à -20°C. Stable pendant un an après l'expédition.

Tampon de stockage:

PBS avec azoture de sodium à 0,02 % et glycérol à 50 % pH 7,3

L'aliquotage n'est pas nécessaire pour le stockage à -20C

*** Les 20ul contiennent 0,1% de BSA.

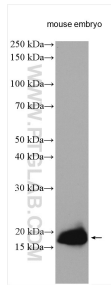
For technical support and original validation data for this product please contact:

T: 1 (888) 4PTGLAB (1-888-478-4522) (toll free in USA), or 1(312) 455-8498 (outside USA)

E: proteintech@ptglab.com
W: ptglab.com

This product is exclusively available under Proteintech Group brand and is not available to purchase from any other manufacturer.

Données de validation sélectionnées



Mouse embryo tissue were subjected to SDS PAGE followed by western blot with 11009-1-AP (Midkine antibody) at dilution of 1:800 incubated at room temperature for 1.5 hours.