

À des fins de recherche uniquement

# Anticorps Polyclonal de lapin anti-GABARAPL1



Numéro de catalogue: 11010-1-AP

Phare

53 Publications

## Informations de base

Numéro de catalogue:

11010-1-AP

Taille:

150ul, Concentration: 500 µg/ml by Nanodrop;

Hôte:

Lapin

Isotype:

IgG

Immunogen Catalog Number:

AG1473

Numéro d'acquisition GenBank:

BC009309

Identification du gène (NCBI):

23710

Nom complet:

GABA(A) receptor-associated protein like 1

MW calculé

14 kDa

MW observés:

16 kDa

Méthode de purification:

Purification par affinité contre l'antigène

Dilutions recommandées:

WB 1:500-1:2000

IP 0.5-4.0 µg for IP and 1:500-1:1000 for WB

IHC 1:50-1:500

IF 1:50-1:500

## Applications

Applications testées:

FC, IF, IHC, IP, WB, ELISA

Demandes citées:

IF, IHC, IP, WB

Spécificité de l'espèce:

Humain, rat, souris

Espèces citées:

Humain, rat, singe, souris, crevette

**Remarque-IHC: il est suggéré de démasquer l'antigène avec un tampon de TE buffer pH 9.0; (\*) À défaut, 'le démasquage de l'antigène peut être effectué avec un tampon citrate pH 6.0.**

Contrôles positifs:

**WB** : tissu cérébral de souris, cellules HepG2, tissu cardiaque humain, tissu cérébral de rat, tissu hépatique de souris

**IP** : tissu hépatique de souris,

**IHC** : tissu cérébral de souris, tissu de tumeur ovarienne humain, tissu hépatique humain

**IF** : cellules HeLa traitées à la chloroquine, cellules HepG2 traitées à la chloroquine

## Informations générales

GABARAPL1 (GABARAP-like protein 1), also named as ATG8, GEC1, APG8L, ATG8L and APG8-LIKE, is a member of GABARP (GABAA receptor-associated protein) family. GABARAPL1 was initially identified as estrogen-regulated gene and the protein acts in receptor and vesicle transport. It's also involved in the process of autophagy like GABARAP and GABARAPL2, and may be considered as an autophagic marker. It is expressed at very high levels in the brain, heart, peripheral blood leukocytes, liver, kidney, placenta and skeletal muscle and at very low levels in thymus and small intestine. The antibody is specific to GABARAPL1, and it doesn't recognize the recombinant GABARAP and GABARAPL2.

## Publications notables

Autrice	Pubmed ID	Journal	Application
Marine Jacquet	34681055	Biology (Basel)	WB,IHC
Noam D Rudnick	28904095	Proc Natl Acad Sci U S A	IHC,IF
Leïla Fonderflick	36139357	Cells	WB

## Stockage

Stockage:

Stocker à -20°C. Stable pendant un an après l'expédition.

Tampon de stockage:

PBS avec azoture de sodium à 0,02 % et glycérol à 50 % pH 7,3

L'aliquotage n'est pas nécessaire pour le stockage à -20C

\*\*\* Les 20ul contiennent 0,1% de BSA.

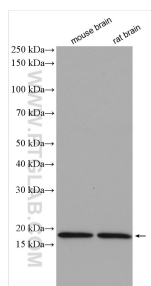
For technical support and original validation data for this product please contact:

T: 1 (888) 4PTGLAB (1-888-478-4522) (toll free in USA), or 1(312) 455-8498 (outside USA)

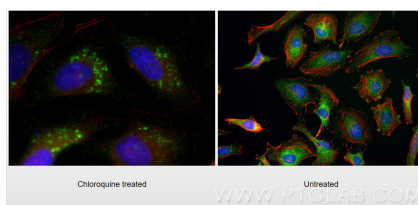
E: [proteintech@ptglab.com](mailto:proteintech@ptglab.com)  
W: [ptglab.com](http://ptglab.com)

This product is exclusively available under Proteintech Group brand and is not available to purchase from any other manufacturer.

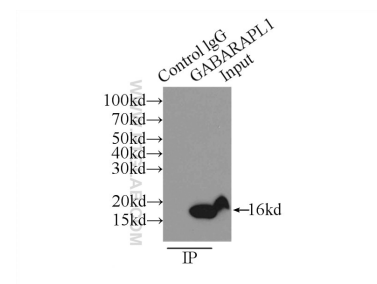
## Données de validation sélectionnées



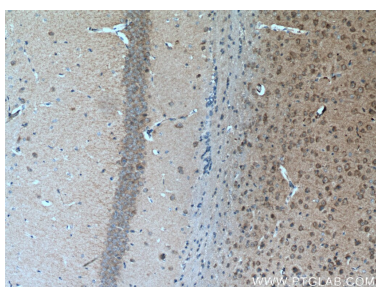
Various lysates were subjected to SDS PAGE followed by western blot with 11010-1-AP (GABARAPL1-Specific antibody) at dilution of 1:1000 incubated at room temperature for 1.5 hours.



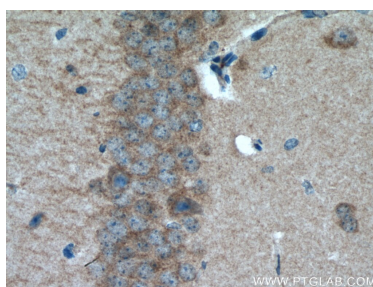
Immunofluorescent analysis of (-20°C Ethanol) fixed Chloroquine treated HeLa cells using GABARAPL1-Specific antibody (11010-1-AP) at dilution of 1:200 and CoraLite®488-Conjugated AffiniPure Goat Anti-Rabbit IgG(H+L), CL594-Phalloidin (red).



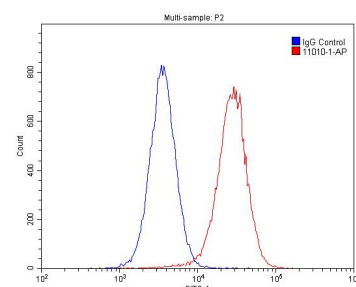
IP Result of anti-GABARAPL1-Specific (IP:11010-1-AP, 3ug; Detection:11010-1-AP 1:500) with mouse liver tissue lysate 5000ug.



Immunohistochemical analysis of paraffin-embedded mouse brain tissue slide using 11010-1-AP (GABARAPL1-Specific antibody) at dilution of 1:200 (under 10x lens). Heat mediated antigen retrieval with Tris-EDTA buffer (pH 9.0).



Immunohistochemical analysis of paraffin-embedded mouse brain tissue slide using 11010-1-AP (GABARAPL1-Specific antibody) at dilution of 1:200 (under 40x lens). Heat mediated antigen retrieval with Tris-EDTA buffer (pH 9.0).



1X10<sup>6</sup> HepG2 cells were stained with 0.2ug GABARAPL1-Specific antibody (11010-1-AP, red) and control antibody (blue). Cells were fixed with 4% PFA and permeabilized with 0.1% Triton X-100. Alexa Fluor 488-conjugated AffiniPure Goat Anti-Rabbit IgG(H+L) with dilution 1:1500.