

À des fins de recherche uniquement

Anticorps Polyclonal de lapin anti-ASF1A/B



Numéro de catalogue: 11011-1-AP

Informations de base

| | | |
|---|---|--|
| Numéro de catalogue: 11011-1-AP | Numéro d'acquisition GenBank: BC010014 | Méthode de purification: Purification par affinité contre l'antigène |
| Taille: 150ul, Concentration: 400 µg/ml by Nanodrop and 247 µg/ml by Bradford method using BSA as the standard; | Identification du gène (NCBI): 55723 | Dilutions recommandées: WB 1:500-1:1000 IHC 1:50-1:500 IF 1:50-1:500 |
| Hôte: Lapin | Nom complet: ASF1 anti-silencing function 1 homolog B (S. cerevisiae) | |
| Isotype: IgG | MW calculé: 202 aa, 22 kDa | |
| Immunogen Catalog Number: AG1477 | MW observés: 22 kDa | |

Applications

| | |
|---|---|
| Applications testées: IF, IHC, WB, ELISA | Contrôles positifs: WB : tissu de thymus de souris, cellules HeLa IHC : tissu de lymphome humain, IF : cellules HeLa, |
| Spécificité de l'espèce: Humain, souris | |
| Remarque-IHC: il est suggéré de démasquer l'antigène avec un tampon de TE buffer pH 9,0; (*) À défaut, le démasquage de l'antigène peut être effectué avec un tampon citrate pH 6,0. | |

Informations générales

ASF1B is a member of the H3/H4 family of histone chaperone proteins and is similar to the anti-silencing function-1 gene in yeast. The encoded protein is the substrate of the tousel-like kinase family of cell cycle-regulated kinases, and may play a key role in modulating the nucleosome structure of chromatin by ensuring a constant supply of histones at sites of nucleosome assembly. This gene encodes a member of the H3/H4 family of histone chaperone proteins and is similar to the anti-silencing function-1 gene in yeast. The encoded protein is the substrate of the tousel-like kinase family of cell cycle-regulated kinases, and may play a key role in modulating the nucleosome structure of chromatin by ensuring a constant supply of histones at sites of nucleosome assembly. This antibody reacts with the ASF1B and ASF1A protein.

Stockage

Stockage:
Stocker à -20°C. Stable pendant un an après l'expédition.
Tampon de stockage:
PBS avec azoture de sodium à 0,02 % et glycérol à 50 % pH 7,3
L'aliquotage n'est pas nécessaire pour le stockage à -20C

*** Les 20ul contiennent 0,1% de BSA.

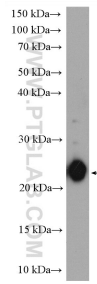
For technical support and original validation data for this product please contact:

T: 1 (888) 4PTGLAB (1-888-478-4522) (toll free in USA), or 1(312) 455-8498 (outside USA)

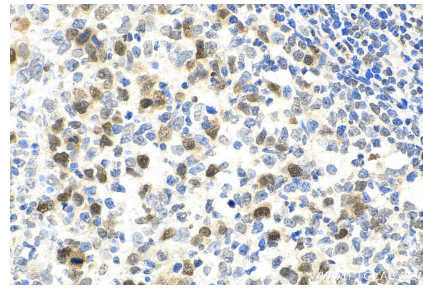
E: proteintech@ptglab.com
W: ptglab.com

This product is exclusively available under Proteintech Group brand and is not available to purchase from any other manufacturer.

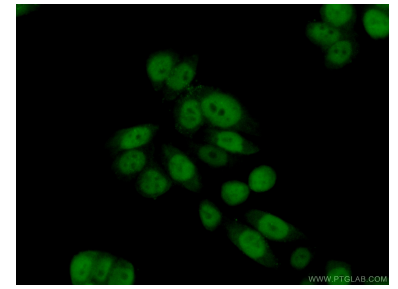
Données de validation sélectionnées



mouse thymus tissue were subjected to SDS PAGE followed by western blot with 11011-1-AP (ASF1B antibody) at dilution of 1:600 incubated at room temperature for 1.5 hours.



Immunohistochemical analysis of paraffin-embedded human lymphoma tissue slide using 11011-1-AP (ASF1A/B antibody) at dilution of 1:200 (under 40x lens). Heat mediated antigen retrieval with Tris-EDTA buffer (pH 9.0).



Immunofluorescent analysis of (10% Formaldehyde) fixed HeLa cells using 11011-1-AP (ASF1B antibody) at dilution of 1:50 and Alexa Fluor 488-conjugated AffiniPure Goat Anti-Rabbit IgG(H+L).