

À des fins de recherche uniquement

Anticorps Polyclonal de lapin anti-FHL3



Numéro de catalogue: 11028-2-AP

Phare

11 Publications

Informations de base

Numéro de catalogue:
11028-2-AP

Taille:
150ul, Concentration: 300 µg/ml by Nanodrop and 153 µg/ml by Bradford method using BSA as the standard;

Hôte:
Lapin

Isotype:
IgG

Immunogen Catalog Number:
AG1495

Numéro d'acquisition GenBank:
BC011697

Identification du gène (NCBI):
2275

Nom complet:
four and a half LIM domains 3

MW calculé
31 kDa

MW observés:
31 kDa

Méthode de purification:
Purification par affinité contre l'antigène

Dilutions recommandées:
WB 1:500-1:1000
IP 0.5-4.0 ug for IP and 1:500-1:1000 for WB
IHC 1:20-1:200

Applications

Applications testées:
IHC, IP, WB, ELISA

Demandes citées:
IF, IHC, IP, WB

Spécificité de l'espèce:
Humain, rat, souris

Espèces citées:
Humain

Remarque-IHC: il est suggéré de démasquer l'antigène avec un tampon de TE buffer pH 9.0; (*) A défaut, le démasquage de l'antigène peut être effectué avec un tampon citrate pH 6,0.

Contrôles positifs:

WB: cellules K-562, tissu ovarien de souris

IP: cellules K-562,

IHC: tissu de tumeur ovarienne humain,

Informations générales

Four and a half LIM domain (FHL) protein 3 is a member of the FHL protein family that has roles in the regulation of signal transduction, survival, cell adhesion, and mobility. It also involves in the development and progression of liver cancer. The FHL proteins have been shown to regulate a variety of transcription factors, including SMAD proteins, β -catenin, SRF, AP-1, NFAT, FOXO1, MyoD, and the androgen receptor. Beside, the FHL proteins may involve in muscle growth and differentiation. Recent research revealed FHL3 was a PCBP2 target, also involved in the growth and induced apoptosis of glioma cell (23585479). This antibody recognizes specifically the 34kd FHL3 protein.

Publications notables

Autrice	Pubmed ID	Journal	Application
Wei Han	29955125	Cell Death Differ	WB, IP
Guodong Cao	34150617	Front Oncol	IF
Xiaojie Xu	28094252	Nat Commun	WB

Stockage

Stockage:

Stocker à -20°C. Stable pendant un an après l'expédition.

Tampon de stockage:

PBS avec azoture de sodium à 0,02 % et glycérol à 50 % pH 7,3

L'aliquotage n'est pas nécessaire pour le stockage à -20C

*** Les 20ul contiennent 0,1% de BSA.

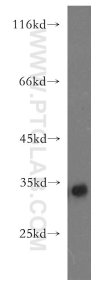
For technical support and original validation data for this product please contact:

T: 1 (888) 4PTGLAB (1-888-478-4522) (toll free in USA), or 1(312) 455-8498 (outside USA)

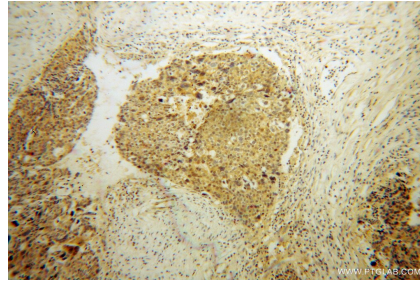
E: proteintech@ptglab.com
W: ptglab.com

This product is exclusively available under Proteintech Group brand and is not available to purchase from any other manufacturer.

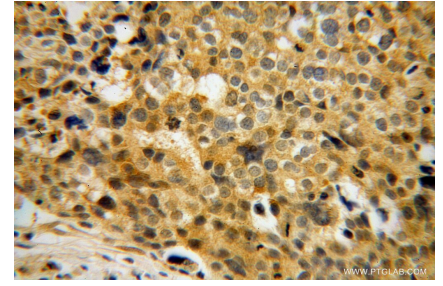
Données de validation sélectionnées



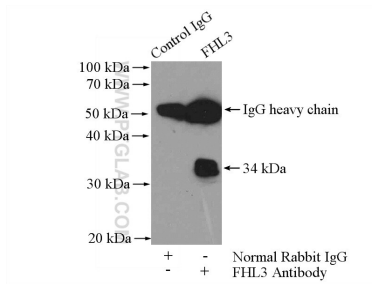
K-562 cells were subjected to SDS PAGE followed by western blot with 11028-2-AP (FHL3 antibody) at dilution of 1:500 incubated at room temperature for 1.5 hours.



Immunohistochemical analysis of paraffin-embedded human ovary tumor using 11028-2-AP (FHL3 antibody) at dilution of 1:50 (under 10x lens).



Immunohistochemical analysis of paraffin-embedded human ovary tumor using 11028-2-AP (FHL3 antibody) at dilution of 1:50 (under 40x lens).



IP Result of anti-FHL3 (IP:11028-2-AP, 4ug;
Detection:11028-2-AP 1:500) with K-562 cells
lysate 1200ug.