

À des fins de recherche uniquement

Anticorps Polyclonal de lapin anti-PSMB4



Numéro de catalogue: 11029-1-AP

Phare

4 Publications

Informations de base

| | | |
|---|--|--|
| Numéro de catalogue: 11029-1-AP | Numéro d'acquisition GenBank: BC010088 | Méthode de purification: Purification par affinité contre l'antigène |
| Taille: 150ul, Concentration: 650 µg/ml by Nanodrop and 267 µg/ml by Bradford method using BSA as the standard; | Identification du gène (NCBI): 5692 | Dilutions recommandées: WB 1:2000-1:10000 IHC 1:20-1:200 IF 1:20-1:200 |
| Hôte: Lapin | Nom complet: proteasome (prosome, macropain) subunit, beta type, 4 | |
| Isotype: IgG | MW calculé: 29 kDa | |
| Immunogen Catalog Number: AG1500 | MW observés: 25 kDa | |

Applications

Applications testées:

IF, IHC, WB, ELISA

Demandes citées:

IF, IHC, WB

Spécificité de l'espèce:

Humain, souris

Espèces citées:

Humain, porc, singe, souris

Remarque-IHC: il est suggéré de démasquer l'antigène avec un tampon de TE buffer pH 9,0; (*) A défaut, 'le démasquage de l'antigène peut être 'effectué avec un tampon citrate pH 6,0.

Contrôles positifs:

WB: cellules HEK-293, cellules MCF-7, tissu de muscle squelettique de souris, tissu de muscle squelettique humain, tissu placentaire humain

IHC: tissu de cancer du sein humain,

IF: cellules MCF-7, cellules HepG2

Informations générales

PSMB4(Proteasome subunit beta type-4) is also named as PROS26 and belongs to the peptidase T1B family. The proteasome is a multicatalytic proteinase complex which is characterized by its ability to cleave peptides with Arg, Phe, Tyr, Leu, and Glu adjacent to the leaving group at neutral or slightly basic pH. The human protein PSMB4 is known mainly as an interaction partner for several proteins, suggesting an important function of binding not only to the lid, but also to the 20 S core of the proteasome. PSMB4 might be a major site for proteasome regulation, where signals from the outside might be transduced to the protease activities inside(PMID:15660529). The full length 30 kDa protein has a propeptide of 45 amino acid.

Publications notables

| Autrice | Pubmed ID | Journal | Application |
|--------------|-----------|------------|-------------|
| Genee Y Lee | 24755469 | Cancer Res | WB |
| Hua Wang | 30066880 | Oncol Rep | WB,IHC |
| Chunhong Liu | 37456679 | JHEP Rep | WB |

Stockage

Stockage:

Stocker à -20°C. Stable pendant un an après l'expédition.

Tampon de stockage:

PBS avec azoture de sodium à 0,02 % et glycérol à 50 % pH 7,3

L'aliquotage n'est pas nécessaire pour le stockage à -20C

*** Les 20ul contiennent 0,1% de BSA.

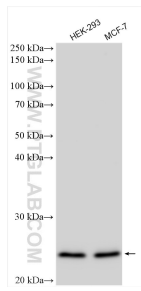
For technical support and original validation data for this product please contact:

T: 1 (888) 4PTGLAB (1-888-478-4522) (toll free in USA), or 1(312) 455-8498 (outside USA)

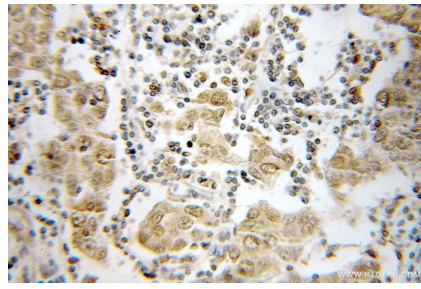
E: proteintech@ptglab.com
W: ptglab.com

This product is exclusively available under Proteintech Group brand and is not available to purchase from any other manufacturer.

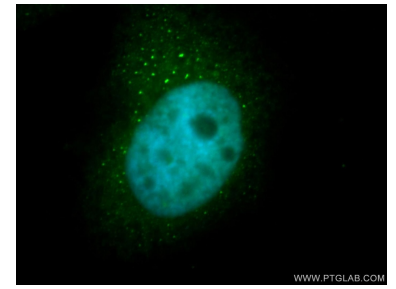
Données de validation sélectionnées



Various lysates were subjected to SDS PAGE followed by western blot with 11029-1-AP (PSMB4 antibody) at dilution of 1:5000 incubated at room temperature for 1.5 hours.



Immunohistochemical analysis of paraffin-embedded human breast cancer using 11029-1-AP (PSMB4 antibody) at dilution of 1:50 (under 10x lens).



Immunofluorescent analysis of MCF-7 cells, using PSMB4 antibody 11029-1-AP at 1:50 dilution and FITC-labeled donkey anti-rabbit IgG (green). Blue pseudocolor = DAPI (fluorescent DNA dye).