

À des fins de recherche uniquement

Anticorps Polyclonal de lapin anti-FEM1B



Numéro de catalogue: 11030-1-AP

Informations de base

Numéro de catalogue: 11030-1-AP	Numéro d'acquisition GenBank: BC010122	Méthode de purification: Purification par affinité contre l'antigène
Taille: 150ul, Concentration: 700 µg/ml by Nanodrop and 333 µg/ml by Bradford method using BSA as the standard;	Identification du gène (NCBI): 10116	Dilutions recommandées: WB 1:500-1:3000 IHC 1:20-1:200
Hôte: Lapin	Nom complet: fem-1 homolog b (C. elegans)	
Isotype: IgG	MW calculé: 70 kDa	
Immunogen Catalog Number: AG1497		

Applications

Applications testées: IHC, WB, ELISA	Contrôles positifs: WB : cellules Jurkat, tissu testiculaire de souris IHC : tissu de cancer de la prostate humain,
Spécificité de l'espèce: Humain, rat, souris	
Remarque-IHC: il est suggéré de démasquer l'antigène avec un tampon de TE buffer pH 9,0; (*) À défaut, le démasquage de l'antigène peut être effectué avec un tampon citrate pH 6,0.	

Informations générales

FEM1B, also named as F1AA, and KIAA0396, is a 627 amino acid protein, which belongs to the fem-1 family. FEM1B is highly expressed in testis and weakly expressed in other tissues. FEM1B localizes both in nucleus and cytoplasm. In the nucleus, the protein level increased slightly after camptothecin (CPT) treatment. FEM1B is a component of an E3 ubiquitin-protein ligase complex, in which it may act as a substrate recognition subunit. FEM1B is involved in apoptosis by acting as a death receptor-associated protein that mediates apoptosis. FEM1B is also involved in glucose homeostasis in pancreatic islet. FEM1B functions as an adapter/mediator in replication stress-induced signaling that leads to the activation of CHEK1. FEM1B exists two isoforms with MV 51,60 and 70 kDa.

Stockage

Stockage:
Stocker à -20°C. Stable pendant un an après l'expédition.
Tampon de stockage:
PBS avec azoture de sodium à 0,02 % et glycérol à 50 % pH 7,3
L'aliquotage n'est pas nécessaire pour le stockage à -20C

*** Les 20ul contiennent 0,1% de BSA.

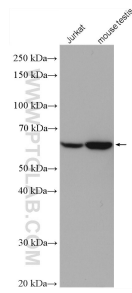
For technical support and original validation data for this product please contact:

T: 1 (888) 4PTGLAB (1-888-478-4522) (toll free in USA), or 1(312) 455-8498 (outside USA)

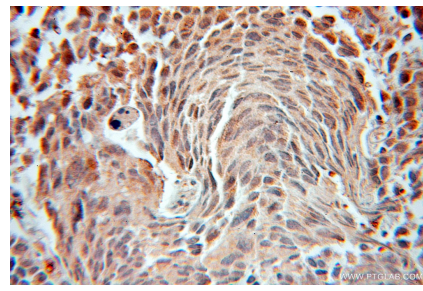
E: proteintech@ptglab.com
W: ptglab.com

This product is exclusively available under Proteintech Group brand and is not available to purchase from any other manufacturer.

Données de validation sélectionnées



Various lysates were subjected to SDS PAGE followed by western blot with 11030-1-AP (FEM1B antibody) at dilution of 1:1500 incubated at room temperature for 1.5 hours.



Immunohistochemical analysis of paraffin-embedded human prostate cancer using 11030-1-AP (FEM1B antibody) at dilution of 1:50 (under 10x lens).