

À des fins de recherche uniquement

Anticorps Polyclonal de lapin anti-CPSF1



Numéro de catalogue: 11031-1-AP

Phare

1 Publications

Informations de base

Numéro de catalogue: 11031-1-AP	Numéro d'acquisition GenBank: BC017232	Méthode de purification: Purification par affinité contre l'antigène
Taille: 150ul , Concentration: 600 µg/ml by Nanodrop;	Identification du gène (NCBI): 29894	Dilutions recommandées: WB 1:500-1:1000 IHC 1:50-1:500
Hôte: Lapin	Nom complet: cleavage and polyadenylation specific factor 1, 160kDa	
Isotype: IgG	MW calculé 160 kDa	
Immunogen Catalog Number: AG1489	MW observés: 160 kDa	

Applications

Applications testées: IHC, WB, ELISA	Contrôles positifs:
Demandes citées: WB	WB : cellules Jurkat, cellules HeLa, tissu cérébral humain
Spécificité de l'espèce: Humain, souris	IHC : tissu cérébral de souris, tissu testiculaire de souris
Espèces citées: Humain	

Remarque-IHC: il est suggéré de démasquer l'antigène avec un tampon de TE buffer pH 9,0; (*) À défaut, le démasquage de l'antigène peut être effectué avec un tampon citrate pH 6,0.

Informations générales

Cleavage and polyadenylation specificity factor (CPSF) is a multisubunit complex that plays a central role in 3-prime processing of pre-mRNAs. CPSF recognizes the AAUAAA signal in the pre-mRNA and interacts with other proteins to facilitate both RNA cleavage and poly(A) synthesis.

Publications notables

Autrice	Pubmed ID	Journal	Application
Beiguang Zhang	29358555	J Biosci	WB

Stockage

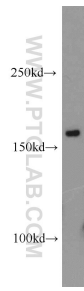
Stockage:
Stocker à -20°C. Stable pendant un an après l'expédition.
Tampon de stockage:
PBS avec azoture de sodium à 0,02 % et glycérol à 50 % pH 7,3
L'aliquotage n'est pas nécessaire pour le stockage à -20C

*** Les 20ul contiennent 0,1% de BSA.

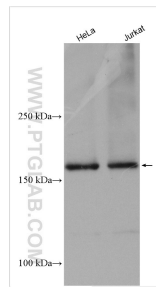
For technical support and original validation data for this product please contact:
T: 1 (888) 4PTGLAB (1-888-478-4522) (toll free in USA), or 1(312) 455-8498 (outside USA)
E: proteintech@ptglab.com
W: ptglab.com

This product is exclusively available under Proteintech Group brand and is not available to purchase from any other manufacturer.

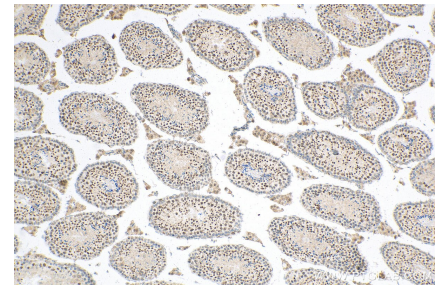
Données de validation sélectionnées



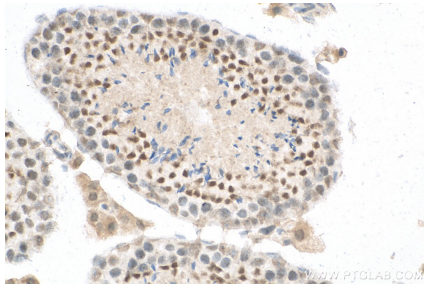
Jurkat cells were subjected to SDS PAGE followed by western blot with 11031-1-AP (CPSF1 antibody) at dilution of 1:500 incubated at room temperature for 1.5 hours.



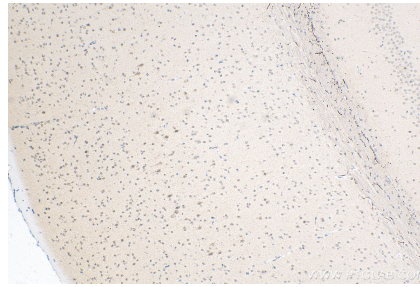
Various lysates were subjected to SDS PAGE followed by western blot with 11031-1-AP (CPSF1 antibody) at dilution of 1:1000 incubated at room temperature for 1.5 hours.



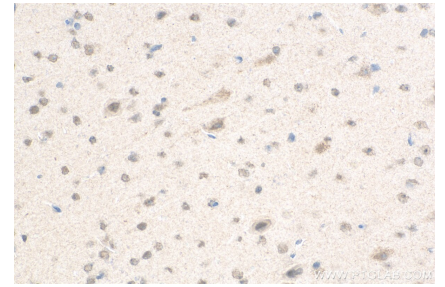
Immunohistochemical analysis of paraffin-embedded mouse testis tissue slide using 11031-1-AP (CPSF1 antibody) at dilution of 1:200 (under 10x lens). Heat mediated antigen retrieval with Tris-EDTA buffer (pH 9.0).



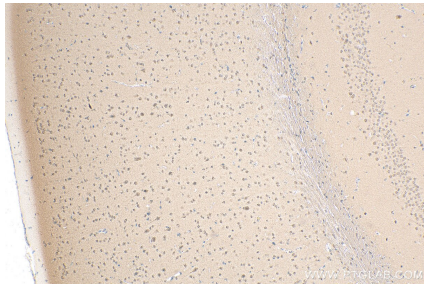
Immunohistochemical analysis of paraffin-embedded mouse testis tissue slide using 11031-1-AP (CPSF1 antibody) at dilution of 1:200 (under 40x lens). Heat mediated antigen retrieval with Tris-EDTA buffer (pH 9.0).



Immunohistochemical analysis of paraffin-embedded mouse brain tissue slide using 11031-1-AP (CPSF1 antibody) at dilution of 1:200 (under 10x lens). Heat mediated antigen retrieval with Tris-EDTA buffer (pH 9.0).



Immunohistochemical analysis of paraffin-embedded mouse brain tissue slide using 11031-1-AP (CPSF1 antibody) at dilution of 1:200 (under 40x lens). Heat mediated antigen retrieval with Tris-EDTA buffer (pH 9.0).



Immunohistochemical analysis of paraffin-embedded mouse brain tissue slide using 11031-1-AP (CPSF1 antibody) at dilution of 1:200 (under 10x lens). Heat mediated antigen retrieval with Tris-EDTA buffer (pH 9.0).