

À des fins de recherche uniquement

Anticorps Polyclonal de lapin anti-Glutamine Synthetase



Numéro de catalogue: 11037-2-AP

Phare

25 Publications

Informations de base

Numéro de catalogue:
11037-2-AP

Taille:
150ul, Concentration: 500 µg/ml by
Nanodrop;

Hôte:
Lapin

Isotype:
IgG

Immunogen Catalog Number:
AG1510

Numéro d'acquisition GenBank:
BC011700

Identification du gène (NCBI):
2752

Nom complet:
glutamate-ammonia ligase
(glutamine synthetase)

MW calculé
374 aa, 42 kDa

MW observés:
40-42 kDa

Méthode de purification:
Purification par affinité contre
l'antigène

Dilutions recommandées:
WB 1:1000-1:6000
IHC 1:50-1:500
IF 1:50-1:500

Applications

Applications testées:
FC, IF, IHC, WB, ELISA

Demandes citées:
ELISA, IF, IHC, IP, WB

Spécificité de l'espèce:
Humain, rat, souris

Espèces citées:
Humain, rat, souris

Contrôles positifs:

WB : cellules Jurkat, tissu hépatique de rat, tissu
hépatique de souris

IHC : tissu cérébral de souris, tissu de cancer du foie
humain

IF : tissu cérébral de souris, tissu cérébral humain

**Remarque-IHC: il est suggéré de démasquer
l'antigène avec un tampon de TE buffer pH
9,0; (*) À défaut, le démasquage de
l'antigène peut être effectué avec un
tampon citrate pH 6,0.**

Informations générales

GLUL (Glutamine synthetase) is also named as GS, GLNS and belongs to the glutamine synthetase family. This enzyme has 2 functions: it catalyzes the production of glutamine and 4-aminobutanoate (gamma-aminobutyric acid, GABA), the latter in a pyridoxal phosphate-independent manner. By similarity, Essential for proliferation of fetal skin fibroblasts (PMID:18662667). Defects in GLUL are the cause of congenital systemic glutamine deficiency (CSGD). Organismal glutamine production is augmented secondary to an increase in the activity of glutamine synthetase in the lung and skeletal muscle (PMID:7630137). There are other bands with higher (66 kDa, 97 kDa) and lower (30 kDa) molecular weights also detected besides the 42 kDa band indicating the proteolysis of GLUL protein by the ubiquitin system (PMID:10091759).

Publications notables

Autrice	Pubmed ID	Journal	Application
Hui Zhang	32946868	Eur J Pharmacol	WB
Si Chen	33061920	Front Psychiatry	WB
Pengyi Zhou	36260151	J Mol Histol	WB

Stockage

Stockage:

Stocker à -20°C. Stable pendant un an après l'expédition.

Tampon de stockage:

PBS avec azoture de sodium à 0,02 % et glycérol à 50 % pH 7,3

L'aliquote n'est pas nécessaire pour le stockage à -20°C

*** Les 20ul contiennent 0,1% de BSA.

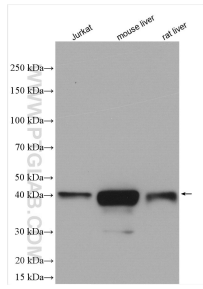
For technical support and original validation data for this product please contact:

T: 1 (888) 4PTGLAB (1-888-478-4522) (toll free
in USA), or 1(312) 455-8498 (outside USA)

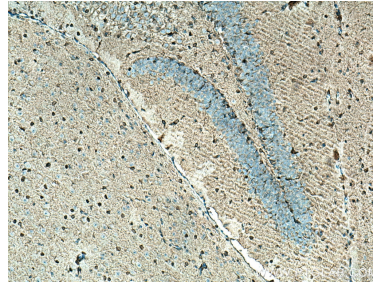
E: proteintech@ptglab.com
W: ptglab.com

This product is exclusively available under Proteintech Group brand and is not available to purchase from any other manufacturer.

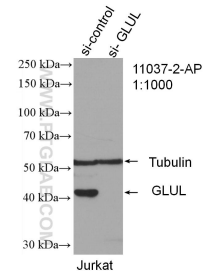
Données de validation sélectionnées



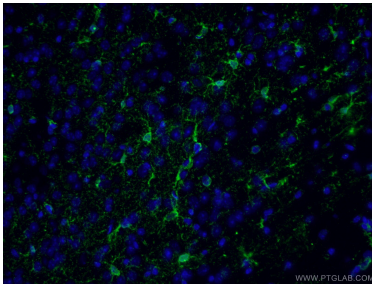
Jurkat cells were subjected to SDS PAGE followed by western blot with 11037-2-AP (Glutamine Synthetase antibody) at dilution of 1:3000 incubated at room temperature for 1.5 hours.



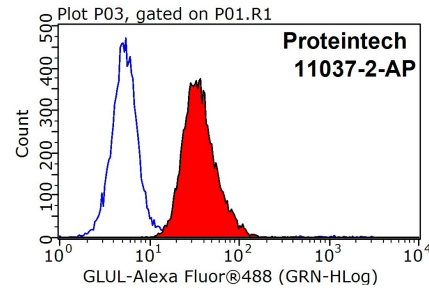
Immunohistochemical analysis of paraffin-embedded mouse brain tissue slide using 11037-2-AP (Glutamine Synthetase antibody) at dilution of 1:200 (under 10x lens). Heat mediated antigen retrieval with Tris-EDTA buffer (pH 9.0).



WB result of Glutamine synthetase antibody (11037-2-AP; 1:1000; incubated at room temperature for 1.5 hours) with sh-Control and sh-Glutamine synthetase transfected Jurkat cells.



Immunofluorescent analysis of (4% PFA) fixed mouse brain tissue using 11037-2-AP (Glutamine synthetase antibody) at dilution of 1:50 and Alexa Fluor 488-Conjugated AffiniPure Goat Anti-Rabbit IgG(H+L).



1X10⁶ HepG2 cells were stained with 0.2ug Glutamine synthetase antibody (11037-2-AP, red) and control antibody (blue). Fixed with 90% MeOH blocked with 3% BSA (30 min). Alexa Fluor 488-conjugated AffiniPure Goat Anti-Rabbit IgG(H+L) with dilution 1:1000.