

À des fins de recherche uniquement

# Anticorps Polyclonal de lapin anti-KRT33B



Numéro de catalogue: 11048-1-AP

1 Publications

## Informations de base

Numéro de catalogue:

11048-1-AP

Taille:

150ul, Concentration: 600 µg/ml by Nanodrop and 300 µg/ml by Bradford method using BSA as the standard;

Hôte:

Lapin

Isotype:

IgG

Immunogen Catalog Number:

AG1522

Numéro d'acquisition GenBank:

BC009971

Identification du gène (NCBI):

3884

Nom complet:

keratin 33B

MW calculé

46 kDa

MW observés:

46 kDa

Méthode de purification:

Purification par affinité contre l'antigène

Dilutions recommandées:

WB 1:500-1:2000

IHC 1:400-1:1600

IF 1:50-1:500

## Applications

Applications testées:

IF, IHC, WB, ELISA

Demandes citées:

WB

Spécificité de l'espèce:

Humain

Espèces citées:

Humain

**Remarque-IHC: il est suggéré de démasquer l'antigène avec un tampon de TE buffer pH 9,0; (\*) A défaut, le démasquage de l'antigène peut être effectué avec un tampon citrate pH 6,0.**

Contrôles positifs:

WB : cellules MCF-7, tissu cérébral humain

IHC : tissu de cancer de la peau humain, tissu de cancer de la prostate humain

IF : cellules MCF-7,

## Informations générales

Keratins are a large family of proteins that form the intermediate filament cytoskeleton of epithelial cells, which are classified into two major sequence types. Type I keratins are a group of acidic intermediate filament proteins, including K9-K23, and the hair keratins Ha1-Ha8. Type II keratins are the basic or neutral counterparts to the acidic type I keratins, including K1-K8, and the hair keratins, Hb1-Hb6. Keratin 33 belongs to type I keratin and is found in hair and nails. There are two isoforms of this protein, encoded by two separate genes, KRTHA3A and KRTHA3B.

## Publications notables

Autrice	Pubmed ID	Journal	Application
Yan-Min Ma	24994782	Asian J Androl	WB

## Stockage

Stockage:

Stocker à -20°C. Stable pendant un an après l'expédition.

Tampon de stockage:

PBS avec azoture de sodium à 0,02 % et glycérol à 50 % pH 7,3

L'aliquotage n'est pas nécessaire pour le stockage à -20C

\*\*\* Les 20ul contiennent 0,1% de BSA.

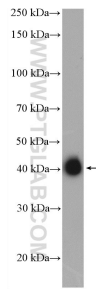
For technical support and original validation data for this product please contact:

T: 1 (888) 4PTGLAB (1-888-478-4522) (toll free in USA), or 1(312) 455-8498 (outside USA)

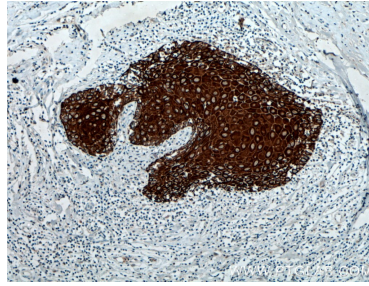
E: proteintech@ptglab.com  
W: ptglab.com

This product is exclusively available under Proteintech Group brand and is not available to purchase from any other manufacturer.

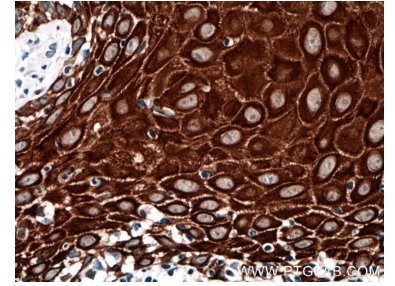
## Données de validation sélectionnées



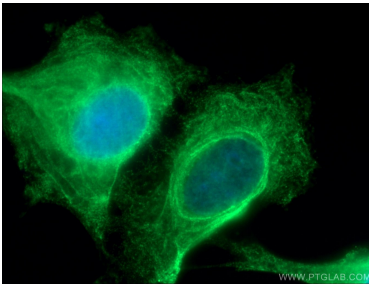
MCF-7 cells were subjected to SDS PAGE followed by western blot with 11048-1-AP (KRT33B antibody) at dilution of 1:1000 incubated at room temperature for 1.5 hours.



Immunohistochemical analysis of paraffin-embedded human skin cancer tissue slide using 11048-1-AP (KRT33B antibody) at dilution of 1:800 (under 10x lens. Heat mediated antigen retrieval with Tris-EDTA buffer (pH 9.0).



Immunohistochemical analysis of paraffin-embedded human skin cancer tissue slide using 11048-1-AP (KRT33B antibody) at dilution of 1:800 (under 40x lens. Heat mediated antigen retrieval with Tris-EDTA buffer (pH 9.0).



Immunofluorescent analysis of (-20°C Ethanol) fixed MCF-7 cells using 11048-1-AP (KRT33B antibody) at dilution of 1:50 and Alexa Fluor 488-conjugated AffiniPure Goat Anti-Rabbit IgG(H+L).