

À des fins de recherche uniquement

Anticorps Polyclonal de lapin anti-MEK1/2



Numéro de catalogue: 11049-1-AP

43 Publications

Informations de base

Numéro de catalogue:

11049-1-AP

Taille:

150ul, Concentration: 1000 µg/ml by Nanodrop and 267 µg/ml by Bradford method using BSA as the standard;

Hôte:

Lapin

Isotype:

IgG

Immunogen Catalog Number:

AG1481

Numéro d'acquisition GenBank:

BC018645

Identification du gène (NCBI):

5605

Nom complet:

mitogen-activated protein kinase kinase 2

MW calculé

44 kDa

MW observés:

44-47 kDa

Méthode de purification:

Purification par affinité contre l'antigène

Dilutions recommandées:

WB 1:5000-1:50000

IP 0.5-4.0 ug for IP and 1:500-1:2000 for WB

IHC 1:50-1:500

IF 1:50-1:500

Applications

Applications testées:

IF, IHC, IP, WB, ELISA

Demandes citées:

IF, IP, WB

Spécificité de l'espèce:

Humain, souris

Espèces citées:

Humain, rat, souris

Remarque-IHC: il est suggéré de démasquer l'antigène avec un tampon de TE buffer pH 9,0; (*) A défaut, 'le démasquage de l'antigène peut être 'effectué avec un tampon citrate pH 6,0.

Contrôles positifs:

WB : cellules A549, cellules HeLa, cellules HL-60, cellules Jurkat, cellules SH-SY5Y, tissu cérébral de souris, tissu cérébral humain

IP : cellules HL-60,

IHC : tissu cérébral de souris,

IF : cellules Jurkat, cellules SH-SY5Y

Informations générales

MEK2(MAPK/ERK kinase 2) is also named as MAP2K2, MKK2, PRKMK2 and belongs to the MAP kinase kinase subfamily. MAPKK is itself dependent on Ser/Thr phosphorylation for activity catalyzed by MAP kinase kinases (RAF or MEKK1). MEK1 and MEK2 are closely related, dual-specificity tyrosine/threonine protein kinases found in the Ras/Raf/MEK/ERK mitogen-activated protein kinase (MAPK) signaling pathway. 11049-1-AP can recognize both the MEK2 and MEK1.

Publications notables

Autrice	Pubmed ID	Journal	Application
Jiakang Zhang	36230524	Cancers (Basel)	WB
Mingjun Gao	34744739	Front Pharmacol	WB
Xiang Li	34803501	Int J Biol Sci	WB

Stockage

Stockage:

Stocker à -20°C. Stable pendant un an après l'expédition.

Tampon de stockage:

PBS avec azoture de sodium à 0,02 % et glycérol à 50 % pH 7,3

L'aliquotage n'est pas nécessaire pour le stockage à -20C

*** Les 20ul contiennent 0,1% de BSA.

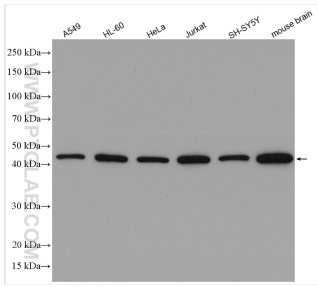
For technical support and original validation data for this product please contact:

T: 1 (888) 4PTGLAB (1-888-478-4522) (toll free in USA), or 1(312) 455-8498 (outside USA)

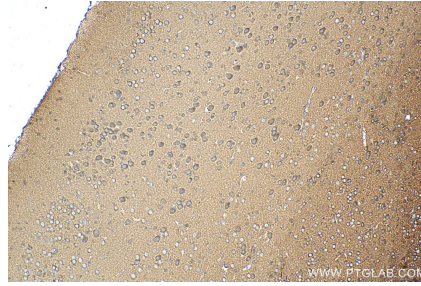
E: proteintech@ptglab.com
W: ptglab.com

This product is exclusively available under Proteintech Group brand and is not available to purchase from any other manufacturer.

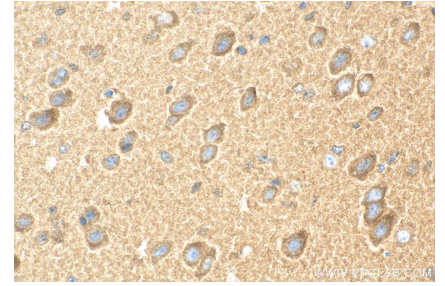
Données de validation sélectionnées



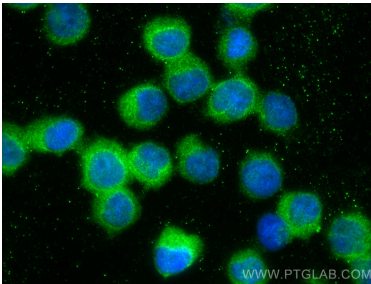
Various lysates were subjected to SDS PAGE followed by western blot with 11049-1-AP (MEK1/2 antibody) at dilution of 1:10000 incubated at room temperature for 1.5 hours.



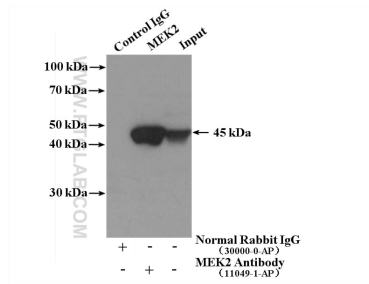
Immunohistochemical analysis of paraffin-embedded mouse brain tissue slide using 11049-1-AP (MEK1/2 antibody) at dilution of 1:200 (under 10x lens). Heat mediated antigen retrieval with Tris-EDTA buffer (pH 9.0).



Immunohistochemical analysis of paraffin-embedded mouse brain tissue slide using 11049-1-AP (MEK1/2 antibody) at dilution of 1:200 (under 40x lens). Heat mediated antigen retrieval with Tris-EDTA buffer (pH 9.0).



Immunofluorescent analysis of (4% PFA) fixed Jurkat cells using MEK1/2 antibody (11049-1-AP) at dilution of 1:200 and CoralLite®488-Conjugated AffiniPure Goat Anti-Rabbit IgG(H+L).



IP Result of anti-MEK2 (IP:11049-1-AP, 4ug; Detection:11049-1-AP 1:1000) with HL-60 cells lysate 1280ug.