

À des fins de recherche uniquement

Anticorps Polyclonal de lapin anti-PROX1



Numéro de catalogue: 11067-2-AP

Phare

41 Publications

Informations de base

Numéro de catalogue:
11067-2-AP

Taille:
150ul, Concentration: 650 µg/ml by
Nanodrop;

Hôte:
Lapin

Isotype:
IgG

Immunogen Catalog Number:
AG1543

Numéro d'acquisition GenBank:
BC024201

Identification du gène (NCBI):
5629

Nom complet:
prospero homeobox 1

MW calculé
737 aa, 83 kDa

MW observés:
90 kDa

Méthode de purification:
Purification par affinité contre
l'antigène

Dilutions recommandées:
WB 1:2000-1:10000
IF 1:20-1:200

Applications

Applications testées:
FC, IF, WB, ELISA

Demandes citées:
ChIP, FC, IF, IP, WB

Spécificité de l'espèce:
Humain, rat, souris

Espèces citées:
Humain, porc, rat, souris

Contrôles positifs:

WB : cellules HepG2, cellules HuH-7, cellules MCF-7,
tissu hépatique de rat, tissu hépatique de souris, tissu
hépatique humain

IF : cellules HepG2,

Informations générales

PROX1, Prospero homeobox protein 1, belongs to the Prospero homeobox family and contain a Prospero-type homeobox DNA-binding domain. PROX1 plays a fundamental role in early development of CNS and regulates the expression of gene and development of postmitotic, undifferentiated neurons. Also, PROX1 is a required regulator of the development of the lymphatic system. This antibody is raised against part of C-terminal chain of human PROX1. The calculated molecular weight of PROX1 is 83 kDa, but with post-translational modifications, PROX1 is about 90 kDa.

Publications notables

| Autrice | Pubmed ID | Journal | Application |
|----------------------|-----------|------------------------|-------------|
| LinXi Cheng | 34489520 | Commun Biol | IF |
| Yoshiya Asano | 28875528 | J Tissue Eng Regen Med | |
| Juliana Falero-Perez | 30372497 | PLoS One | |

Stockage

Stockage:

Stocker à -20°C. Stable pendant un an après l'expédition.

Tampon de stockage:

PBS avec azoture de sodium à 0,02 % et glycérol à 50 % pH 7,3

L'aliquotage n'est pas nécessaire pour le stockage à -20C

*** Les 20ul contiennent 0,1% de BSA.

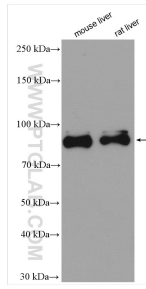
For technical support and original validation data for this product please contact:

T: 1 (888) 4PTGLAB (1-888-478-4522) (toll free
in USA), or 1(312) 455-8498 (outside USA)

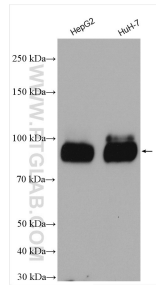
E: proteintech@ptglab.com
W: ptglab.com

This product is exclusively available under Proteintech Group brand and is not available to purchase from any other manufacturer.

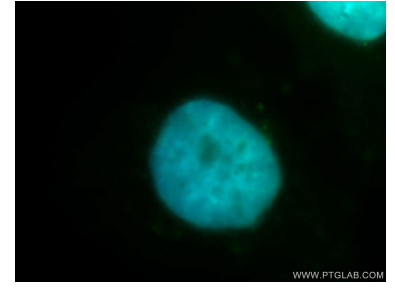
Données de validation sélectionnées



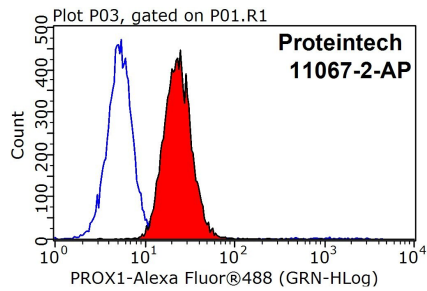
Various lysates were subjected to SDS PAGE followed by western blot with 11067-2-AP (PROX1 antibody) at dilution of 1:2000 incubated at room temperature for 1.5 hours.



Various lysates were subjected to SDS PAGE followed by western blot with 11067-2-AP (PROX1 antibody) at dilution of 1:5000 incubated at room temperature for 1.5 hours.



Immunofluorescent analysis of HepG2 cells, using PROX1 antibody 11067-2-AP at 1:100 dilution and FITC-labeled donkey anti-rabbit IgG (green). Blue pseudocolor = DAPI (fluorescent DNA dye).



1X10⁶ HepG2 cells were stained with 0.2ug PROX1 antibody (11067-2-AP, red) and control antibody (blue). Fixed with 90% MeOH blocked with 3% BSA (30 min). Alexa Fluor 488-conjugated AffiniPure Goat Anti-Rabbit IgG(H+L) with dilution 1:1000.