

À des fins de recherche uniquement

Anticorps Polyclonal de lapin anti-BORIS



Numéro de catalogue: 11074-2-AP

Informations de base

Numéro de catalogue: 11074-2-AP	Numéro d'acquisition GenBank: BC130486	Méthode de purification: Purification par affinité contre l'antigène
Taille: 150ul, Concentration: 500 µg/ml by Nanodrop and 287 µg/ml by Bradford method using BSA as the standard;	Identification du gène (NCBI): 140690	Dilutions recommandées: WB 1:500-1:2000 IHC 1:20-1:200 IF 1:20-1:200
Hôte: Lapin	Nom complet: CCCTC-binding factor (zinc finger protein)-like	
Isotype: IgG	MW calculé: 82 kDa, 75 kDa	
Immunogen Catalog Number: AG1547	MW observés: 75 kDa	

Applications

Applications testées:

IF, IHC, WB, ELISA

Spécificité de l'espèce:

Humain, rat, souris

Remarque-IHC: il est suggéré de démasquer l'antigène avec un tampon de TE buffer pH 9.0; (*) À défaut, le démasquage de l'antigène peut être effectué avec un tampon citrate pH 6.0.

Contrôles positifs:

WB : cellules PC-3, cellules HeLa, tissu testiculaire de rat, tissu testiculaire de souris

IHC : tissu de tumeur ovarienne humain,

IF : cellules SH-SY5Y, cellules HeLa

Informations générales

CTCF, also named BORIS (for brother of the regulator of imprinted sites) is a paralogue of the 11 zinc-finger transcription factor, CTCF. It is predominantly expressed in spermatocytes in the testis, also can be found in tumors and cancer cell lines. It mainly participates in insulator function, nuclear architecture and transcriptional control, which probably acts by recruiting epigenetic chromatin modifiers. It has a key role in gene imprinting in male germline, by participating in the establishment of differential methylation at the IGF2/H19 imprinted control region (ICR). Directly binds the unmethylated H19 ICR and recruits the PRMT7 methyltransferase, leading to methylate histone H4 'Arg-3' to form H4R3me2. Present polyclonal anti-CTCF antibody(11074-2-AP) is produced by immunizing animals with part of C-terminal chain of CTCFL and detect a 75-kDa band and a 55-kDa band.

Stockage

Stockage:

Stocker à -20°C. Stable pendant un an après l'expédition.

Tampon de stockage:

PBS avec azoture de sodium à 0,02 % et glycérol à 50 % pH 7,3

L'aliquotage n'est pas nécessaire pour le stockage à -20°C

*** Les 20ul contiennent 0,1% de BSA.

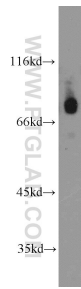
For technical support and original validation data for this product please contact:

T: 1 (888) 4PTGLAB (1-888-478-4522) (toll free in USA), or 1(312) 455-8498 (outside USA)

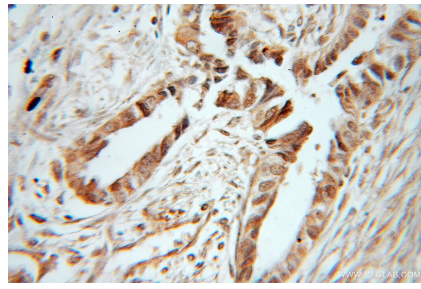
E: proteintech@ptglab.com
W: ptglab.com

This product is exclusively available under Proteintech Group brand and is not available to purchase from any other manufacturer.

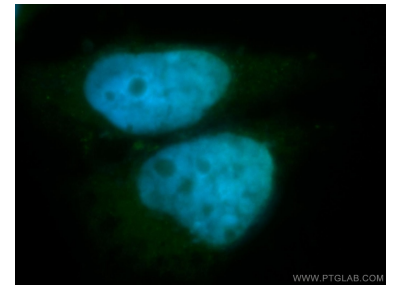
Données de validation sélectionnées



PC-3 cells were subjected to SDS PAGE followed by western blot with 11074-2-AP (BORIS antibody) at dilution of 1:1000 incubated at room temperature for 1.5 hours.



Immunohistochemical analysis of paraffin-embedded human ovary tumor using 11074-2-AP (BORIS antibody) at dilution of 1:50 (under 40x lens).



Immunofluorescent analysis of SH-SY5Y cells, using CTCFL antibody 11074-2-AP at 1:50 dilution and FITC-labeled donkey anti-rabbit IgG(green). Blue pseudocolor = DAPI (fluorescent DNA dye).