

À des fins de recherche uniquement

# Anticorps Polyclonal de lapin anti-SLCO6A1



Numéro de catalogue: 11078-1-AP

## Informations de base

<b>Numéro de catalogue:</b> 11078-1-AP	<b>Numéro d'acquisition GenBank:</b> BC034976	<b>Méthode de purification:</b> Purification par affinité contre l'antigène
<b>Taille:</b> 150ul , Concentration: 160 µg/ml by Nanodrop and 147 µg/ml by Bradford method using BSA as the standard;	<b>Identification du gène (NCBI):</b> 133482	<b>Dilutions recommandées:</b> WB 1:500-1:3000
<b>Hôte:</b> Lapin	<b>Nom complet:</b> solute carrier organic anion transporter family, member 6A1	
<b>Isotype:</b> IgG	<b>MW calculé</b> 719aa,79 kDa; 657aa,73 kDa	
<b>Immunogen Catalog Number:</b> AG1532	<b>MW observés:</b> 73-80 kDa, 51 kDa	

## Applications

<b>Applications testées:</b> WB, ELISA	<b>Contrôles positifs:</b> WB : cellules HEK-293, cellules HEK-293T, cellules Jurkat, cellules K-562, tissu rénal de souris
<b>Spécificité de l'espèce:</b> Humain, souris	

## Informations générales

SLCO6A1, also named as OATP6A1 and SLC21A19, belongs to the organic anion transporter protein (OATPs) family. OATP proteins are reported to mediate the transport of a variety of lowmolecular weight substrates, such as drugs, toxins and steroid hormone conjugates. SLCO6A1 is strongly expressed in testis and weakly expressed in spleen, brain, fetal brain and placenta. SLCO6A1 has 3 isoforms with the molecular mass of 51, 73 and 79 kDa. (PMID: 26861727)

## Stockage

**Stockage:**  
Stocker à -20°C. Stable pendant un an après l'expédition.  
**Tampon de stockage:**  
PBS avec azoture de sodium à 0,02 % et glycérol à 50 % pH 7,3  
L'aliquotage n'est pas nécessaire pour le stockage à -20C

**\*\*\* Les 20ul contiennent 0,1% de BSA.**

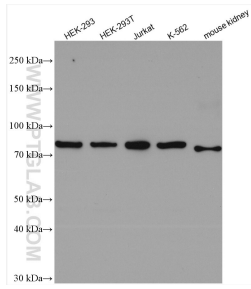
For technical support and original validation data for this product please contact:

T: 1 (888) 4PTGLAB (1-888-478-4522) (toll free in USA), or 1(312) 455-8498 (outside USA)

E: [proteintech@ptglab.com](mailto:proteintech@ptglab.com)  
W: [ptglab.com](http://ptglab.com)

**This product is exclusively available under Proteintech Group brand and is not available to purchase from any other manufacturer.**

## Données de validation sélectionnées



Various lysates were subjected to SDS PAGE followed by western blot with 11078-1-AP (SLCO6A1 antibody) at dilution of 1:1500 incubated at room temperature for 1.5 hours.