

À des fins de recherche uniquement

# Anticorps Polyclonal de lapin anti-PPP1CC



Numéro de catalogue: 11082-1-AP

6 Publications

## Informations de base

Numéro de catalogue:  
11082-1-AP

Taille:  
150ul, Concentration: 400 µg/ml by Nanodrop and 200 µg/ml by Bradford method using BSA as the standard;

Hôte:  
Lapin

Isotype:  
IgG

Immunogen Catalog Number:  
AG1550

Numéro d'acquisition GenBank:  
BC014073

Identification du gène (NCBI):  
5501

Nom complet:  
protein phosphatase 1, catalytic subunit, gamma isoform

MW calculé:  
35 kDa

MW observés:  
35 kDa

Méthode de purification:  
Purification par affinité contre l'antigène

Dilutions recommandées:  
WB 1:2000-1:16000  
IP 0.5-4.0 ug for IP and 1:500-1:1000 for WB  
IHC 1:50-1:500  
IF 1:50-1:500

## Applications

Applications testées:  
IF, IHC, IP, WB, ELISA

Demandes citées:  
IP, WB

Spécificité de l'espèce:  
Humain, rat, souris

Espèces citées:  
Humain, rat, souris

**Remarque-IHC: il est suggéré de démasquer l'antigène avec un tampon de TE buffer pH 9,0; (\*) A défaut, 'le démasquage de l'antigène peut être effectué avec un tampon citrate pH 6,0.**

Contrôles positifs:

WB : cellules HEK-293, cellules HEK-293T, cellules L02, cellules MCF-7, tissu cérébral de rat, tissu cérébral de souris

IP : cellules HEK-293,

IHC : tissu de cancer du pancréas humain,

IF : cellules HEK-293,

## Informations générales

PPP1CC, also named as PP-1G, belongs to the PPP phosphatase family and PP-1 subfamily. Protein phosphatase 1 (PP1) is essential for cell division, and participates in the regulation of glycogen metabolism, muscle contractility and protein synthesis. It is involved in regulation of ionic conductances and long-term synaptic plasticity. PPP1CC may play an important role in dephosphorylating substrates such as the postsynaptic density-associated Ca<sup>2+</sup>/calmodulin dependent protein kinase II.

## Publications notables

| Autrice     | Pubmed ID | Journal                    | Application |
|-------------|-----------|----------------------------|-------------|
| Ru-Jia Liao | 25224648  | Clin Exp Pharmacol Physiol | WB, IP      |
| Xiaoman Zhu | 36096985  | Cell Death Dis             | WB          |
| Chao Huang  | 24196533  | Am J Physiol Cell Physiol  | WB          |

## Stockage

Stockage:

Stocker à -20°C. Stable pendant un an après l'expédition.

Tampon de stockage:

PBS avec azoture de sodium à 0,02 % et glycérol à 50 % pH 7,3

L'aliquotage n'est pas nécessaire pour le stockage à -20C

\*\*\* Les 20ul contiennent 0,1% de BSA.

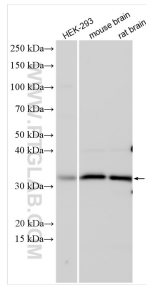
For technical support and original validation data for this product please contact:

T: 1 (888) 4PTGLAB (1-888-478-4522) (toll free in USA), or 1(312) 455-8498 (outside USA)

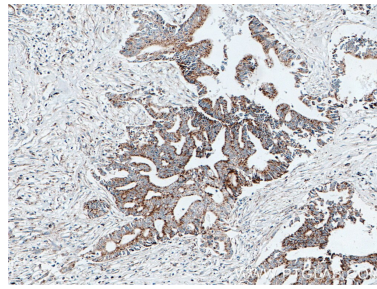
E: [proteintech@ptglab.com](mailto:proteintech@ptglab.com)  
W: [ptglab.com](http://ptglab.com)

This product is exclusively available under Proteintech Group brand and is not available to purchase from any other manufacturer.

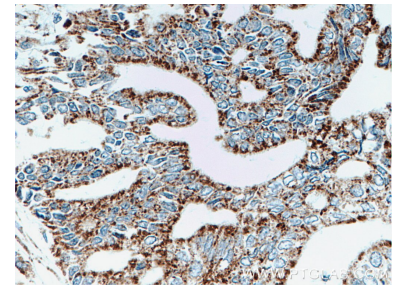
## Données de validation sélectionnées



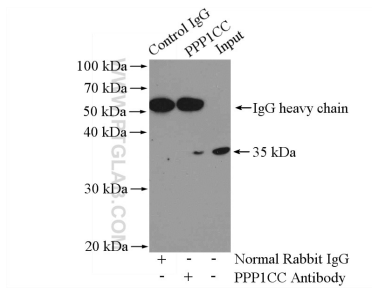
Various lysates were subjected to SDS PAGE followed by western blot with 11082-1-AP (PPP1CC antibody) at dilution of 1:8000 incubated at room temperature for 1.5 hours.



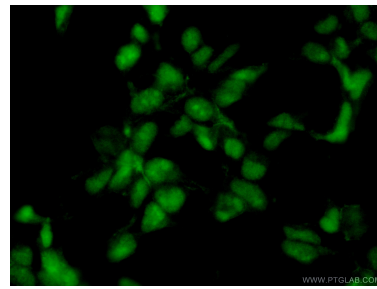
Immunohistochemical analysis of paraffin-embedded human pancreas cancer tissue slide using 11082-1-AP (PPP1CC antibody) at dilution of 1:200 (under 10x lens. Heat mediated antigen retrieval with Tris-EDTA buffer (pH 9.0).



Immunohistochemical analysis of paraffin-embedded human pancreas cancer tissue slide using 11082-1-AP (PPP1CC antibody) at dilution of 1:200 (under 40x lens. Heat mediated antigen retrieval with Tris-EDTA buffer (pH 9.0).



IP Result of anti-PPP1CC (IP:11082-1-AP, 4ug; Detection:11082-1-AP 1:500) with HEK-293 cells lysate 2000ug.



Immunofluorescent analysis of (10% Formaldehyde) fixed HEK-293 cells using 11082-1-AP (PPP1CC antibody) at dilution of 1:50 and Alexa Fluor 488-conjugated AffiniPure Goat Anti-Rabbit IgG(H+L).