

À des fins de recherche uniquement

# Anticorps Polyclonal de lapin anti-IFT57



Numéro de catalogue: 11083-1-AP

Phare

19 Publications

## Informations de base

Numéro de catalogue:  
11083-1-AP

Taille:  
150ul, Concentration: 500 µg/ml by Nanodrop and 350 µg/ml by Bradford method using BSA as the standard;

Hôte:  
Lapin

Isotype:  
IgG

Immunogen Catalog Number:  
AG1566

Numéro d'acquisition GenBank:  
BC011899

Identification du gène (NCBI):  
55081

Nom complet:  
intraflagellar transport 57 homolog (Chlamydomonas)

MW calculé  
49 kDa

MW observés:  
49 kDa

Méthode de purification:  
Purification par affinité contre l'antigène

Dilutions recommandées:  
WB 1:500-1:1000  
IP 0.5-4.0 ug for IP and 1:500-1:1000 for WB  
IHC 1:50-1:500  
IF 1:50-1:500

## Applications

Applications testées:  
IF, IHC, IP, WB, ELISA

Demandes citées:  
IF, IP, WB

Spécificité de l'espèce:  
canin, Humain, rat, souris

Espèces citées:  
Humain, poulet, souris

**Remarque-IHC: il est suggéré de démasquer l'antigène avec un tampon de TE buffer pH 9,0; (\*) A défaut, 'le démasquage de l'antigène peut être 'effectué avec un tampon citrate pH 6,0.**

Contrôles positifs:

WB : tissu rétinien de souris, cellules HEK-293

IP : cellules HEK-293,

IHC : tissu de cancer de la prostate humain, tissu pancréatique humain

IF : cellules MDCK,

## Informations générales

IFT57, also named as DERP8, ESRRLB1, HIPPI and MHS4R2, belongs to the IFT57 family. It is required for the formation of cilia. IFT57 plays an indirect role in sonic hedgehog signaling, cilia being required for all activity of the hedgehog pathway. It is a component of IFT complex B which composed of IFT88, IFT57, TRAF3IP1, IFT52, IFT27, HSPB11 and IFT20. In contrast to BBS proteins, IFT57 and IFT88 is found in almost every cilium. (PMID:22072986)

## Publications notables

Autrice	Pubmed ID	Journal	Application
Malavika Raman	26389662	Nat Cell Biol	WB
Ying Hsu	29049287	PLoS Genet	WB
Laura Vuolo	30320547	Elife	WB,IF

## Stockage

Stockage:

Stocker à -20°C. Stable pendant un an après l'expédition.

Tampon de stockage:

PBS avec azoture de sodium à 0,02 % et glycérol à 50 % pH 7,3

L'aliquotage n'est pas nécessaire pour le stockage à -20C

\*\*\* Les 20ul contiennent 0,1% de BSA.

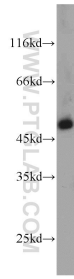
For technical support and original validation data for this product please contact:

T: 1 (888) 4PTGLAB (1-888-478-4522) (toll free in USA), or 1(312) 455-8498 (outside USA)

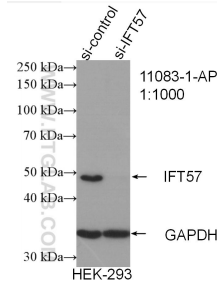
E: proteintech@ptglab.com  
W: ptglab.com

This product is exclusively available under Proteintech Group brand and is not available to purchase from any other manufacturer.

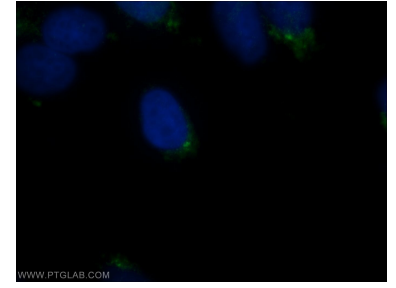
## Données de validation sélectionnées



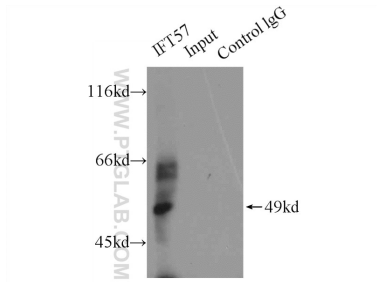
mouse retina tissue was subjected to SDS PAGE followed by western blot with 11083-1-AP (IFT57 antibody) at dilution of 1:1000 incubated at room temperature for 1.5 hours.



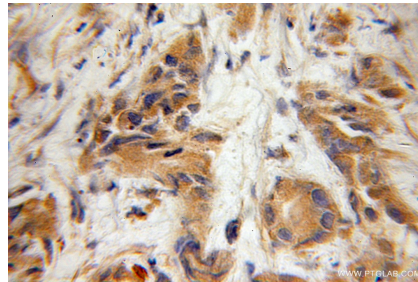
WB result of IFT57 antibody (11083-1-AP; 1:1000; incubated at room temperature for 1.5 hours) with sh-Control and sh-IFT57 transfected HEK-293 cells.



Immunofluorescent analysis of MDCK cells using 11083-1-AP (IFT57 antibody) at dilution of 1:50 and Alexa Fluor 488-conjugated AffiniPure Goat Anti-Rabbit IgG(H+L).



IP Result of anti-IFT57 (IP:11083-1-AP, 5ug; Detection:11083-1-AP 1:800) with HEK-293 cells lysate 2000ug.



Immunohistochemical analysis of paraffin-embedded human prostate cancer using 11083-1-AP (IFT57 antibody) at dilution of 1:50 (under 10x lens).