

À des fins de recherche uniquement

Anticorps Polyclonal de lapin anti-PARD3



Numéro de catalogue: 11085-1-AP

Phare

23 Publications

Informations de base

Numéro de catalogue:

11085-1-AP

Taille:

150ul, Concentration: 800 µg/ml by Nanodrop;

Hôte:

Lapin

Isotype:

IgG

Immunogen Catalog Number:

AG1565

Numéro d'acquisition GenBank:

BC011711

Identification du gène (NCBI):

56288

Nom complet:

par-3 partitioning defective 3 homolog (C. elegans)

MW calculé

151 kDa

MW observés:

180 kDa, 140-150 kDa, 100 kDa

Méthode de purification:

Purification par affinité contre l'antigène

Dilutions recommandées:

WB 1:2000-1:10000

IP 0.5-4.0 ug for IP and 1:200-1:1000 for WB

IHC 1:50-1:200

IF 1:200-1:800

Applications

Applications testées:

FC, IF, IHC, IP, WB, ELISA

Demandes citées:

CoIP, IF, IHC, IP, WB

Spécificité de l'espèce:

Humain, souris

Espèces citées:

Humain, poulet, rat, souris

Contrôles positifs:

WB : cellules A549, cellules HEK-293, cellules HeLa, cellules MCF-7

IP : cellules MCF-7,

IHC : tissu de cancer du côlon humain,

IF : cellules MCF-7, tissu cérébral de souris, tissu rénal de souris

Remarque-IHC: il est suggéré de démasquer l'antigène avec un tampon de TE buffer pH 9,0; (*) À défaut, le démasquage de l'antigène peut être effectué avec un tampon citrate pH 6,0.

Informations générales

PARD3 (also known as ASIP, Par3, or Bazooka) is one of PARD proteins which are essential for asymmetric cell division and polarized growth. PARD3 is involved in the establishment of cell polarity and in the asymmetric cytokinesis. It plays a role in tight junctions at epithelial cell-cell contacts. PARD3 has three splice isoforms at 100 kDa, 150 kDa, and 180 kDa. This polyclonal antibody raised against C-terminal 281 amino acids of human PARD3 recognizes these three isoforms.

Publications notables

Autrice	Pubmed ID	Journal	Application
Yunfeng Hu	36179489	Biomed Pharmacother	WB
Gayathri Visakan	34813898	Matrix Biol	IF
Katie S Kindt	34001891	Nat Commun	IF

Stockage

Stockage:

Stocker à -20°C. Stable pendant un an après l'expédition.

Tampon de stockage:

PBS avec azoture de sodium à 0,02 % et glycérol à 50 % pH 7,3

L'aliquotage n'est pas nécessaire pour le stockage à -20C

***** Les 20ul contiennent 0,1% de BSA.**

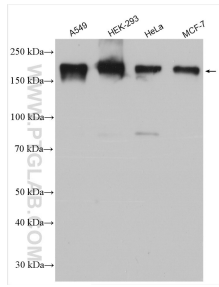
For technical support and original validation data for this product please contact:

T: 1 (888) 4PTGLAB (1-888-478-4522) (toll free in USA), or 1(312) 455-8498 (outside USA)

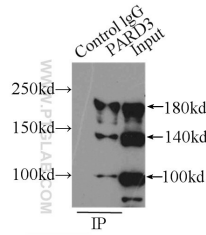
E: proteintech@ptglab.com
W: ptglab.com

This product is exclusively available under Proteintech Group brand and is not available to purchase from any other manufacturer.

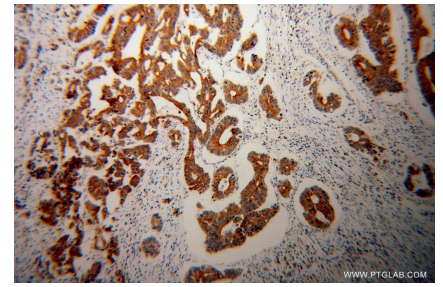
Données de validation sélectionnées



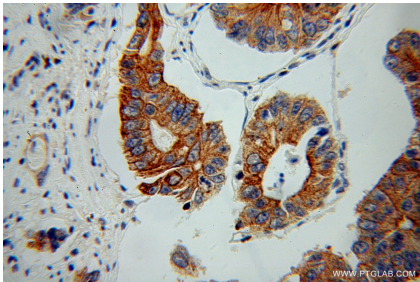
Various lysates were subjected to SDS PAGE followed by western blot with 11085-1-AP (PARD3 antibody) at dilution of 1:5000 incubated at room temperature for 1.5 hours.



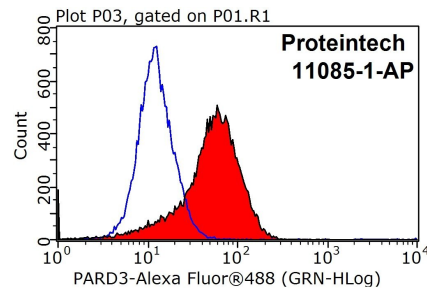
IP Result of anti-PARD3 (IP:11085-1-AP, 4ug; Detection:11085-1-AP 1:200) with MCF-7 cells lysate 2900ug.



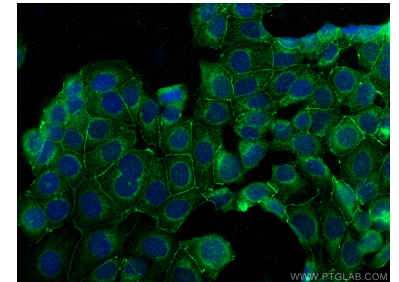
Immunohistochemical analysis of paraffin-embedded human colon cancer using 11085-1-AP (PARD3 antibody) at dilution of 1:50 (under 10x lens).



Immunohistochemical analysis of paraffin-embedded human colon cancer using 11085-1-AP (PARD3 antibody) at dilution of 1:50 (under 40x lens).



1X10⁶ MCF-7 cells were stained with 0.2ug PARD3 antibody (11085-1-AP, red) and control antibody (blue). Fixed with 90% MeOH blocked with 3% BSA (30 min). Alexa Fluor 488-conjugated AffiniPure Goat Anti-Rabbit IgG(H+L) with dilution 1:1000.



Immunofluorescent analysis of (-20°C Ethanol) fixed MCF-7 cells using PARD3 antibody (11085-1-AP) at dilution of 1:400 and CoraLite@488-Conjugated AffiniPure Goat Anti-Rabbit IgG(H+L).