

À des fins de recherche uniquement

# Anticorps Polyclonal de lapin anti-NME1



Numéro de catalogue: 11086-2-AP

11 Publications

## Informations de base

Numéro de catalogue:

11086-2-AP

Taille:

150ul, Concentration: 550 µg/ml by Nanodrop and 347 µg/ml by Bradford method using BSA as the standard;

Hôte:

Lapin

Isotype:

IgG

Immunogen Catalog Number:

AG1548

Numéro d'acquisition GenBank:

BC018994

Identification du gène (NCBI):

4830

Nom complet:

non-metastatic cells 1, protein (NM23A) expressed in

MW calculé

17 kDa

MW observés:

16-20 kDa

Méthode de purification:

Purification par affinité contre l'antigène

Dilutions recommandées:

WB 1:500-1:2000

IP 0.5-4.0 ug for IP and 1:500-1:1000 for WB

IHC 1:20-1:200

IF 1:20-1:200

## Applications

Applications testées:

IF, IHC, IP, WB, ELISA

Demandes citées:

CoIP, IF, IHC, WB

Spécificité de l'espèce:

Humain

Espèces citées:

Humain

**Remarque-IHC: il est suggéré de démasquer l'antigène avec un tampon de TE buffer pH 9,0; (\*) A défaut, 'le démasquage de l'antigène peut être 'effectué avec un tampon citrate pH 6,0.**

Contrôles positifs:

WB : cellules HeLa, multi-cellules

IP : cellules A549,

IHC : tissu de cancer du poumon humain, tissu de cancer du pancréas humain

IF : cellules MCF-7,

## Informations générales

NME1 is also named as NDPKA(Nucleoside diphosphate kinase A), NM23(Metastasis inhibition factor nm23),GAAD(Granzyme A-activated DNase) and belongs to the NDK family.It is a major role in the synthesis of nucleoside triphosphates other than ATP and required for neural development including neural patterning and cell fate determination.It has 3 isoforms produced by alternative splicing.

## Publications notables

Autrice	Pubmed ID	Journal	Application
Anna Bianchi-Smiraglia	34667203	Nat Commun	WB
Marianna Naki	35563580	Int J Mol Sci	CoIP
Hongyuan Zhao	33786631	Oncol Rep	IF

## Stockage

Stockage:

Stocker à -20°C. Stable pendant un an après l'expédition.

Tampon de stockage:

PBS avec azoture de sodium à 0,02 % et glycérol à 50 % pH 7,3

L'aliquotage n'est pas nécessaire pour le stockage à -20C

\*\*\* Les 20ul contiennent 0,1% de BSA.

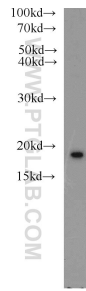
For technical support and original validation data for this product please contact:

T: 1 (888) 4PTGLAB (1-888-478-4522) (toll free in USA), or 1(312) 455-8498 (outside USA)

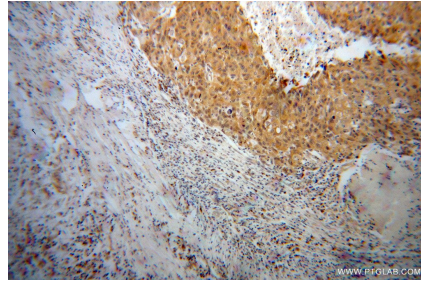
E: proteintech@ptglab.com  
W: ptglab.com

This product is exclusively available under Proteintech Group brand and is not available to purchase from any other manufacturer.

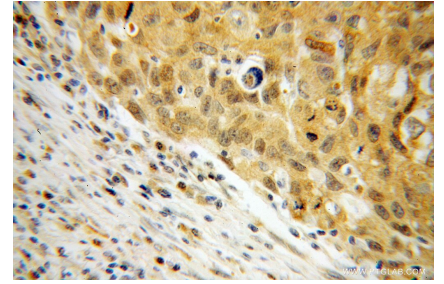
## Données de validation sélectionnées



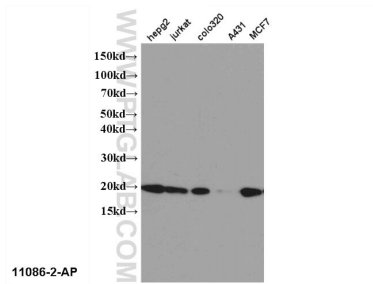
HeLa cells were subjected to SDS PAGE followed by western blot with 11086-2-AP (NME1 antibody) at dilution of 1:1500 incubated at room temperature for 1.5 hours.



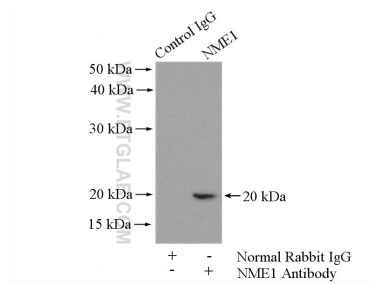
Immunohistochemical analysis of paraffin-embedded human lung cancer using 11086-2-AP (NME1 antibody) at dilution of 1:100 (under 10x lens).



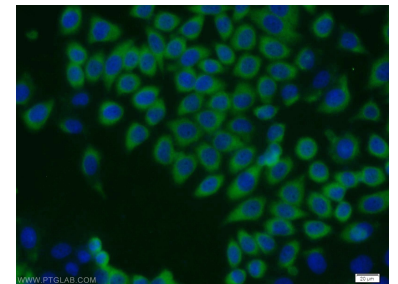
Immunohistochemical analysis of paraffin-embedded human lung cancer using 11086-2-AP (NME1 antibody) at dilution of 1:100 (under 40x lens).



WB result of 11086-2-AP (NME1 antibody).



IP Result of anti-NME1 (IP:11086-2-AP, 4ug; Detection:11086-2-AP 1:500) with A549 cells lysate 2800ug.



Immunofluorescent analysis of MCF-7 cells using 11086-2-AP (NME1 antibody) at dilution of 1:50 and Alexa Fluor 488-conjugated AffiniPure Goat Anti-Rabbit IgG(H+L).