

À des fins de recherche uniquement

Anticorps Polyclonal de lapin anti-NFE2



Numéro de catalogue: 11089-1-AP

Phare

9 Publications

Informations de base

Numéro de catalogue:
11089-1-AP

Taille:
150ul, Concentration: 450 µg/ml by Nanodrop and 233 µg/ml by Bradford method using BSA as the standard;

Hôte:
Lapin

Isotype:
IgG

Immunogen Catalog Number:
AG1570

Numéro d'acquisition GenBank:
BC005044

Identification du gène (NCBI):

4778

Nom complet:
nuclear factor (erythroid-derived 2),
45kDa

MW calculé

41 kDa

MW observés:

45 kDa

Méthode de purification:

Purification par affinité contre l'antigène

Dilutions recommandées:

WB 1:500-1:1000

IP 0.5-4.0 ug for IP and 1:500-1:1000 for WB

IHC 1:20-1:200

IF 1:20-1:200

Applications

Applications testées:

IF, IHC, IP, WB, ELISA

Demandes citées:

CoIP, IF, WB

Spécificité de l'espèce:

Humain

Espèces citées:

Humain, souris

Remarque-IHC: il est suggéré de démasquer l'antigène avec un tampon de TE buffer pH 9,0; (*) À défaut, 'le démasquage de l'antigène peut être 'effectué avec un tampon citrate pH 6,0.

Contrôles positifs:

WB : cellules K-562, cellules U-937

IP : cellules K-562,

IHC : tissu de cancer du côlon humain,

IF : cellules HepG2,

Informations générales

The transcription factor p45 nuclear factor-erythroid-derived 2(NFE2) is one component of the NF-E2 complex that essential for regulating erythroid and megakaryocytic maturation and differentiation. It also plays crucial roles in erythroid and megakaryocytic lineages. NFE2 recognizes the TCAT/C sequence of the AP-1-like core palindrome present in a number of erythroid and megakaryocytic gene promoters, and acts as a activator. And it may has a role in all aspects of hemoglobin production from globin and heme synthesis to procurement of iron. This is a rabbit polyclonal antibody raised against full-length NFE2 of human origin.

Publications notables

Autrice	Pubmed ID	Journal	Application
Jia Li	34715142	Life Sci	WB
Zhiyuan Lu	34739188	Adv Sci (Weinh)	WB
Carne Aman	35619054	BMC Genomics	WB

Stockage

Stockage:

Stocker à -20°C. Stable pendant un an après l'expédition.

Tampon de stockage:

PBS avec azoture de sodium à 0,02 % et glycérol à 50 % pH 7,3

L'aliquotage n'est pas nécessaire pour le stockage à -20C

*** Les 20ul contiennent 0,1% de BSA.

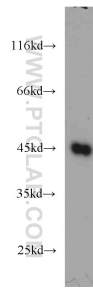
For technical support and original validation data for this product please contact:

T: 1 (888) 4PTGLAB (1-888-478-4522) (toll free in USA), or 1(312) 455-8498 (outside USA)

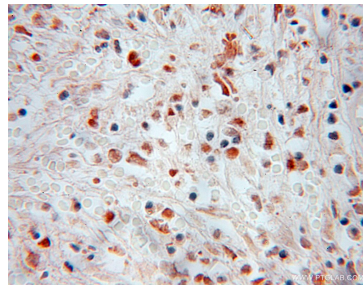
E: proteintech@ptglab.com
W: ptglab.com

This product is exclusively available under Proteintech Group brand and is not available to purchase from any other manufacturer.

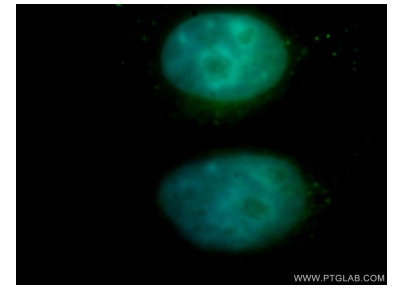
Données de validation sélectionnées



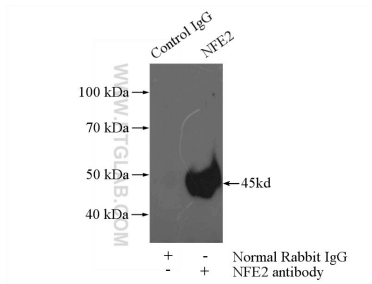
K-562 cells were subjected to SDS PAGE followed by western blot with 11089-1-AP (NFE2 antibody) at dilution of 1:500 incubated at room temperature for 1.5 hours.



Immunohistochemical analysis of paraffin-embedded human colon cancer using 11089-1-AP (NFE2 antibody) at dilution of 1:50 (under 10x lens).



Immunofluorescent analysis of HepG2 cells, using NFE2 antibody 11089-1-AP at 1:100 dilution and FITC-labeled donkey anti-rabbit IgG (green). Blue pseudocolor = DAPI (fluorescent DNA dye).



IP Result of anti-NFE2 (IP:11089-1-AP, 4ug; Detection:11089-1-AP 1:500) with K-562 cells lysate 3440ug.