

À des fins de recherche uniquement

Anticorps Polyclonal de lapin anti-EMAP II



Numéro de catalogue: 11091-1-AP

Phare

6 Publications

Informations de base

Numéro de catalogue:

11091-1-AP

Taille:

150ul, Concentration: 550 µg/ml by Nanodrop;

Hôte:

Lapin

Isotype:

IgG

Immunogen Catalog Number:

AG1560

Numéro d'acquisition GenBank:

BC014051

Identification du gène (NCBI):

9255

Nom complet:

small inducible cytokine subfamily E, member 1 (endothelial monocyte-activating)

MW calculé

34 kDa

MW observés:

34 kDa and 68 kDa

Méthode de purification:

Purification par affinité contre l'antigène

Dilutions recommandées:

WB 1:500-1:2000

IP 0.5-4.0 µg for IP and 1:500-1:1000 for WB

IHC 1:50-1:500

IF 1:50-1:500

Applications

Applications testées:

IF, IHC, IP, WB, ELISA

Demandes citées:

IF, IHC, WB

Spécificité de l'espèce:

Humain, souris

Espèces citées:

Humain, rat

Contrôles positifs:

WB : cellules HeLa, cellules A549, cellules SGC-7901, cellules SH-SY5Y, cellules U-251, tissu cérébral de souris

IP : cellules SGC-7901,

IHC : tissu de cancer du col de l'utérus humain,

IF : cellules HeLa,

Remarque-IHC: il est suggéré de démasquer l'antigène avec un tampon de TE buffer pH 9,0; (*) À défaut, 'le démasquage de l'antigène peut être 'effectué avec un tampon citrate pH 6,0.

Informations générales

SCYE1 (small inducible cytokine subfamily E, member 1) is also named as EMAP2, AIMP1. The human cDNA encodes a 312-amino acid polypeptide that the predicted 34-kDa precursor can be cleaved to produce an active 20-kDa product (PMID:7929199). SCYE1 is secreted as a result of various stimuli, including TNF- α , heat shock, and hypoxia, and that it acts as a multifunctional cytokine on both endothelial and immune cells (PMID:18292511). Defects in AIMP1 are the cause of leukodystrophy hypomyelinating type 3 (HLD3). It has 2 isoforms produced by alternative splicing and the protein can exist as a dimer (PMID:11306575).

Publications notables

Autrice	Pubmed ID	Journal	Application
Krishnendu Khan	36037331	Proc Natl Acad Sci U S A	WB
Xintian Chen	33794309	Cancer Lett	WB
Wei Gao	31287215	Proteomics	WB

Stockage

Stockage:

Stocker à -20°C. Stable pendant un an après l'expédition.

Tampon de stockage:

PBS avec azoture de sodium à 0,02 % et glycérol à 50 % pH 7,3

L'aliquotage n'est pas nécessaire pour le stockage à -20C

*** Les 20ul contiennent 0,1% de BSA.

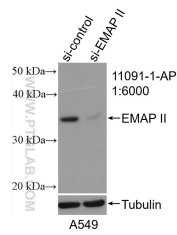
For technical support and original validation data for this product please contact:

T: 1 (888) 4PTGLAB (1-888-478-4522) (toll free in USA), or 1(312) 455-8498 (outside USA)

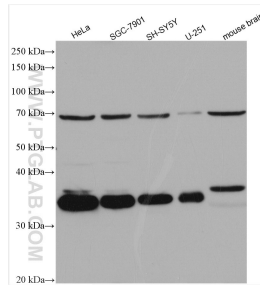
E: proteintech@ptglab.com
W: ptglab.com

This product is exclusively available under Proteintech Group brand and is not available to purchase from any other manufacturer.

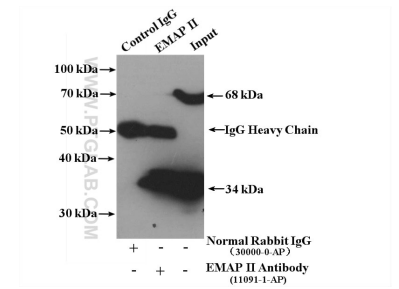
Données de validation sélectionnées



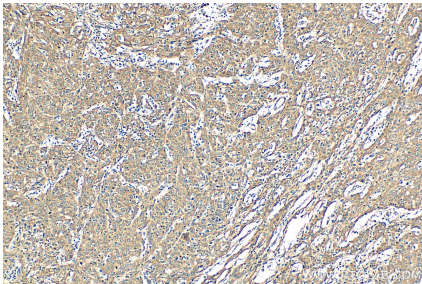
WB result of EMAP II antibody (11091-1-AP; 1:6000; incubated at room temperature for 1.5 hours) with sh-Control and sh-EMAP II transfected A549 cells.



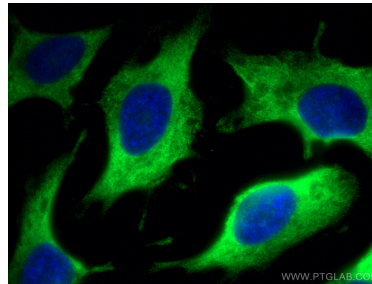
Various lysates were subjected to SDS PAGE followed by western blot with 11091-1-AP (EMAP II antibody) at dilution of 1:1000 incubated at room temperature for 1.5 hours.



IP result of anti-EMAP II (IP:11091-1-AP, 4ug; Detection:11091-1-AP 1:500) with SGC-7901 cells lysate 2200 ug.



Immunohistochemical analysis of paraffin-embedded human cervical cancer tissue slide using 11091-1-AP (EMAP II antibody) at dilution of 1:200 (under 10x lens). Heat mediated antigen retrieval with Tris-EDTA buffer (pH 9.0).



Immunofluorescent analysis of (-20°C Methanol) fixed HeLa cells using EMAP II antibody (11091-1-AP) at dilution of 1:200 and CoraLite®488-Conjugated AffiniPure Goat Anti-Rabbit IgG(H+L).