

À des fins de recherche uniquement

Anticorps Polyclonal de lapin anti-c-SRC



Numéro de catalogue: 11097-1-AP

64 Publications

Informations de base

Numéro de catalogue:

11097-1-AP

Taille:

150ul, Concentration: 800 µg/ml by Nanodrop;

Hôte:

Lapin

Isotype:

IgG

Immunogen Catalog Number:

AG1575

Numéro d'acquisition GenBank:

BC011566

Identification du gène (NCBI):

6714

Nom complet:

v-src sarcoma (Schmidt-Ruppin A-2) viral oncogene homolog (avian)

MW calculé

60 kDa

MW observés:

55 kDa, 60 kDa

Méthode de purification:

Purification par affinité contre l'antigène

Dilutions recommandées:

WB 1:500-1:3000

IP 0.5-4.0 µg for IP and 1:500-1:2000 for WB

IHC 1:100-1:400

IF 1:10-1:100

Applications

Applications testées:

FC, IF, IHC, IP, WB, ELISA

Demandes citées:

IF, IHC, IP, WB

Spécificité de l'espèce:

Humain, rat, souris, Hamster

Espèces citées:

Humain, rat, souris

Remarque-IHC: il est suggéré de démasquer l'antigène avec un tampon de TE buffer pH 9,0; (*) À défaut, le démasquage de l'antigène peut être effectué avec un tampon citrate pH 6,0.

Contrôles positifs:

WB : cellules HUVEC, cellules A431, cellules CHO, cellules COLO 320, cellules Jurkat, cellules SH-SY5Y, tissu cérébral de souris

IP : cellules SH-SY5Y,

IHC : tissu de cancer du sein humain, tissu cérébral humain, tissu splénique humain

IF : cellules A431,

Informations générales

SRC, also named as SRC1 and p60-Src, belongs to the protein kinase superfamily, Tyr protein kinase family and SRC subfamily. It is a non-receptor protein tyrosine kinase that plays pivotal roles in numerous cellular processes such as proliferation, migration, and transformation. In concert with PTK2B, SRC plays an important role in osteoclastic bone resorption. It promotes energy production in osteoclasts by activating mitochondrial cytochrome C oxidase. SRC can be detected as 60 kDa and 55 kDa (PMID: 15047935, 21461171).

Publications notables

Autrice	Pubmed ID	Journal	Application
YanHua Fan	36174847	Fitoterapia	WB
Lianhong Yin	29033837	Front Pharmacol	WB
Jiao Wu	34517345	Aging (Albany NY)	WB

Stockage

Stockage:

Stocker à -20°C. Stable pendant un an après l'expédition.

Tampon de stockage:

PBS avec azoture de sodium à 0,02 % et glycérol à 50 % pH 7,3

L'aliquotage n'est pas nécessaire pour le stockage à -20C

*** Les 20ul contiennent 0,1% de BSA.

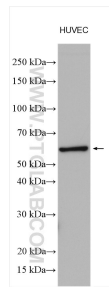
For technical support and original validation data for this product please contact:

T: 1 (888) 4PTGLAB (1-888-478-4522) (toll free in USA), or 1(312) 455-8498 (outside USA)

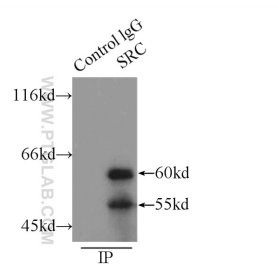
E: proteintech@ptglab.com
W: ptglab.com

This product is exclusively available under Proteintech Group brand and is not available to purchase from any other manufacturer.

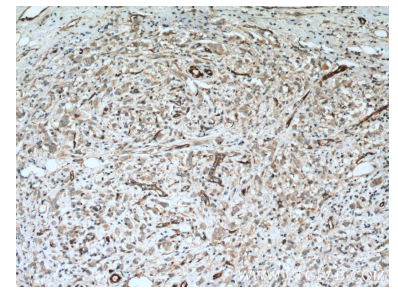
Données de validation sélectionnées



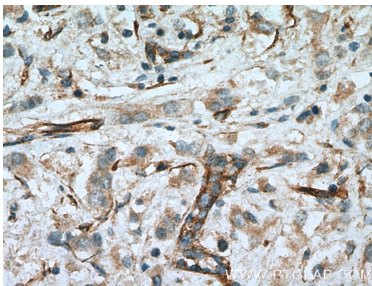
Various lysates were subjected to SDS PAGE followed by western blot with 11097-1-AP (SRC antibody) at dilution of 1:1500 incubated at room temperature for 1.5 hours.



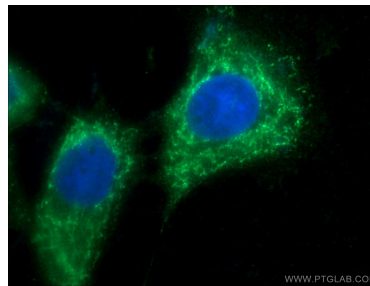
IP Result of anti-SRC (IP:11097-1-AP, 5ug; Detection:11097-1-AP 1:1000) with SH-SY5Y cells lysate 2900ug.



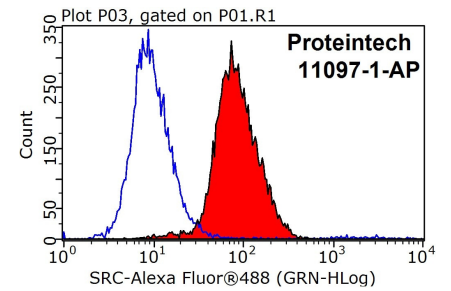
Immunohistochemical analysis of paraffin-embedded human breast cancer tissue slide using 11097-1-AP (c-SRC Antibody) at dilution of 1:200 (under 10x lens). Heat mediated antigen retrieval with Tris-EDTA buffer (pH 9.0).



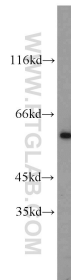
Immunohistochemical analysis of paraffin-embedded human breast cancer tissue slide using 11097-1-AP (c-SRC Antibody) at dilution of 1:200 (under 40x lens). Heat mediated antigen retrieval with Tris-EDTA buffer (pH 9.0).



Immunofluorescent analysis of A431 cells using 11097-1-AP (SRC antibody) at dilution of 1:25 and Alexa Fluor 488-conjugated AffiniPure Goat Anti-Rabbit IgG(H+L).



1X10⁶ SH-SY5Y cells were stained with 0.2ug c-SRC antibody (11097-1-AP, red) and control antibody (blue). Fixed with 90% MeOH blocked with 3% BSA (30 min). Alexa Fluor 488-conjugated AffiniPure Goat Anti-Rabbit IgG(H+L) with dilution 1:1000.



Jurkat cells were subjected to SDS PAGE followed by western blot with 11097-1-AP (SRC antibody) at dilution of 1:1000 incubated at room temperature for 1.5 hours.