

À des fins de recherche uniquement

Anticorps Polyclonal de lapin anti-Rab23



Numéro de catalogue: 11101-1-AP

Phare

9 Publications

Informations de base

Numéro de catalogue:
11101-1-AP

Taille:
150ul, Concentration: 500 µg/ml by Nanodrop and 313 µg/ml by Bradford method using BSA as the standard;

Hôte:
Lapin

Isotype:
IgG

Immunogen Catalog Number:
AG1588

Numéro d'acquisition GenBank:
BC015021

Identification du gène (NCBI):
51715

Nom complet:
RAB23, member RAS oncogene family

MW calculé
237 aa, 27 kDa

MW observés:
27 kDa

Méthode de purification:
Purification par affinité contre l'antigène

Dilutions recommandées:
WB 1:500-1:2000
IP 0.5-4.0 ug for IP and 1:500-1:2000 for WB
IHC 1:50-1:500

Applications

Applications testées:
IHC, IP, WB, ELISA

Demandes citées:
IF, IHC, WB

Spécificité de l'espèce:
Humain, rat, souris

Espèces citées:
Humain, souris

Remarque-IHC: il est suggéré de démasquer l'antigène avec un tampon de TE buffer pH 9,0; (*) À défaut, 'le démasquage de l'antigène peut être 'effectué avec un tampon citrate pH 6,0.

Contrôles positifs:

WB : tissu cérébral de souris, cellules HEK-293, tissu cérébral de rat, tissu cérébral humain

IP : tissu cérébral de souris,

IHC : tissu de cancer du foie humain,

Informations générales

Rab23 is a novel member of large Rab small GTPase family. It plays important roles during embryonic development. The brain-enriched Rab23 is the only Rab protein that is known to have a distinct function during central nervous system development, playing an essential role as a negative regulator of the Sonic Hedgehog (Shh) pathway. RAB23 has recently been identified in mesangial cells (MCs), and could serve as a biomarker that indicates the severity of FSGS (focal segmental glomerulosclerosis). Mutations in RAB23 may result in ACP52 (acrocephalopolysyndactyly type 2).

Publications notables

Autrice	Pubmed ID	Journal	Application
Andreas Gerondopoulos	31564489	Curr Biol	WB,IF
Lingling Gao	31550546	Int J Biochem Cell Biol	WB,IHC
Xuanjin Wei	35514241	Exp Dermatol	WB,IF

Stockage

Stockage:

Stocker à -20°C. Stable pendant un an après l'expédition.

Tampon de stockage:

PBS avec azoture de sodium à 0,02 % et glycérol à 50 % pH 7,3

L'aliquotage n'est pas nécessaire pour le stockage à -20C

*** Les 20ul contiennent 0,1% de BSA.

For technical support and original validation data for this product please contact:

T: 1 (888) 4PTGLAB (1-888-478-4522) (toll free in USA), or 1(312) 455-8498 (outside USA)

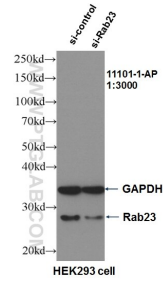
E: proteintech@ptglab.com
W: ptglab.com

This product is exclusively available under Proteintech Group brand and is not available to purchase from any other manufacturer.

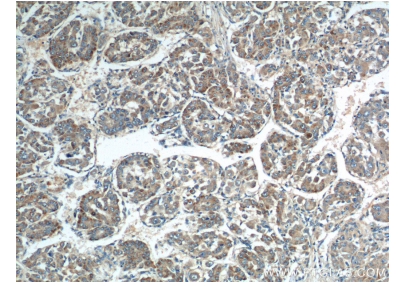
Données de validation sélectionnées



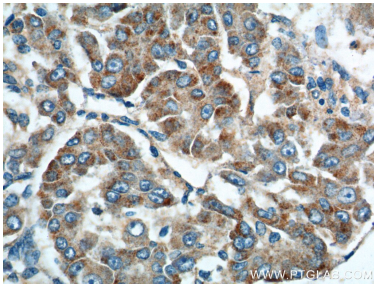
mouse brain tissue were subjected to SDS PAGE followed by western blot with 11101-1-AP (RAB23 antibody) at dilution of 1:1000 incubated at room temperature for 1.5 hours.



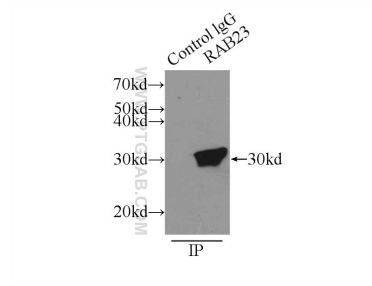
WB result of RAB23 antibody (11101-1-AP, 1:3000) with si-Control and si-Rab23 transfected HEK293 cells.



Immunohistochemical analysis of paraffin-embedded human liver cancer tissue slide using 11101-1-AP (RAB23 Antibody) at dilution of 1:200 (under 10x lens).



Immunohistochemical analysis of paraffin-embedded human liver cancer tissue slide using 11101-1-AP (RAB23 Antibody) at dilution of 1:200 (under 40x lens).



IP Result of anti-RAB23 (IP:11101-1-AP, 3ug; Detection:11101-1-AP 1:1000) with mouse brain tissue lysate 7000ug.