

À des fins de recherche uniquement

# Anticorps Polyclonal de lapin anti-ACVR1



Numéro de catalogue: 11108-1-AP

## Informations de base

Numéro de catalogue:	11108-1-AP	Numéro d'acquisition GenBank:	BC033867	Méthode de purification:	Purification par affinité contre l'antigène
Taille:	150ul, Concentration: 600 µg/ml by Nanodrop;	Identification du gène (NCBI):	90	Dilutions recommandées:	WB 1:500-1:1000
Hôte:	Lapin	Nom complet:	activin A receptor, type I		
Isotype:	IgG	MW calculé:	509 aa, 57 kDa		
Immunogen Catalog Number:	AG1556	MW observés:	57 kDa		

## Applications

Applications testées:	WB, ELISA	Contrôles positifs:	WB : tissu rénal de souris,
Spécificité de l'espèce:	Humain, rat, souris		

## Informations générales

ACVR1 (activin receptor type I), also known as ALK2 or ACTRI, is a receptor for activin. It forms a stable complex with type II receptor after ligand binding. These receptors are all transmembrane proteins, composed of a ligand-binding extracellular domain with cysteine-rich region, a transmembrane domain, and a cytoplasmic domain with predicted serine/threonine specificity. Type I receptors are essential for signaling, and type II receptors are required for binding ligands and for expression of type I receptors. ACVR1 is expressed in many tissues including skeletal muscle and chondrocytes. It functions as a receptor for bone morphogenetic protein (BMP) and induces Indian hedgehog in chondrocytes during skeletal development. Mutations in ACVR1 gene are associated with fibrodysplasia ossificans progressive (PMID: 16642017).

## Stockage

**Stockage:**  
Stocker à -20°C. Stable pendant un an après l'expédition.  
**Tampon de stockage:**  
PBS avec azoture de sodium à 0,02 % et glycérol à 50 % pH 7,3  
L'aliquotage n'est pas nécessaire pour le stockage à -20C

\*\*\* Les 20ul contiennent 0,1% de BSA.

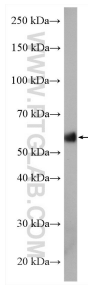
For technical support and original validation data for this product please contact:

T: 1 (888) 4PTGLAB (1-888-478-4522) (toll free in USA), or 1(312) 455-8498 (outside USA)

E: [proteintech@ptglab.com](mailto:proteintech@ptglab.com)  
W: [ptglab.com](http://ptglab.com)

This product is exclusively available under Proteintech Group brand and is not available to purchase from any other manufacturer.

## Données de validation sélectionnées



mouse kidney tissue were subjected to SDS PAGE followed by western blot with 11108-1-AP (ACVR1 antibody) at dilution of 1:600 incubated at room temperature for 1.5 hours.