

À des fins de recherche uniquement

Anticorps Polyclonal de lapin anti-DDX3



Numéro de catalogue: 11115-1-AP

Phare

19 Publications

Informations de base

Numéro de catalogue:

11115-1-AP

Taille:

150ul, Concentration: 400 µg/ml by Nanodrop;

Hôte:

Lapin

Isotype:

IgG

Immunogen Catalog Number:

AG1614

Numéro d'acquisition GenBank:

BC011819

Identification du gène (NCBI):

1654

Nom complet:

DEAD (Asp-Glu-Ala-Asp) box polypeptide 3, X-linked

MW calculé

73 kDa

MW observés:

73 kDa

Méthode de purification:

Purification par affinité contre l'antigène

Dilutions recommandées:

WB 1:1000-1:8000

IP 0.5-4.0 ug for IP and 1:200-1:1000 for WB

IHC 1:50-1:500

IF 1:200-1:800

Applications

Applications testées:

IF, IHC, IP, WB, ELISA

Demandes citées:

CoIP, IF, IHC, RIP, WB

Spécificité de l'espèce:

Humain, rat, souris

Espèces citées:

Humain, rat, souris

Remarque-IHC: il est suggéré de démasquer l'antigène avec un tampon de TE buffer pH 9,0; (*) À défaut, le démasquage de l'antigène peut être effectué avec un tampon citrate pH 6,0.

Contrôles positifs:

WB : cellules HeLa, cellules C6, cellules HepG2, cellules HT-1080, cellules K-562, cellules NIH/3T3, cellules PC-12, tissu cérébral de rat, tissu cérébral de souris, tissu hépatique de souris

IP : cellules HeLa,

IHC : tissu de mélanome malin humain, tissu de cancer du col de l'utérus humain

IF : cellules HepG2,

Informations générales

DDX3X, also named as DBX, DDX3 and HLP2, belongs to the DEAD box helicase family and DDX3/DED1 subfamily. It is ATP-dependent RNA helicase. DDX3X acts as a cofactor for XPO1-mediated nuclear export of incompletely spliced HIV-1 Rev RNAs. It is also involved in HIV-1 replication. DDX3X interacts specifically with hepatitis C virus core protein resulting in a change in intracellular location. 73 kDa is the target band. 60-65 kDa is some other isoform. This antibody can bind both DDX3X and DDX3Y for the close sequences.

Publications notables

Autrice	Pubmed ID	Journal	Application
DANDAN FENG	34650637	Exp Ther Med	WB
Yifei Zhou	36242920	Biochem Biophys Res Commun	WB,IHC
Weiwei Cheng	31587919	Neuron	WB

Stockage

Stockage:

Stocker à -20°C. Stable pendant un an après l'expédition.

Tampon de stockage:

PBS avec azoture de sodium à 0,02 % et glycérol à 50 % pH 7,3

L'aliquotage n'est pas nécessaire pour le stockage à -20C

*** Les 20ul contiennent 0,1% de BSA.

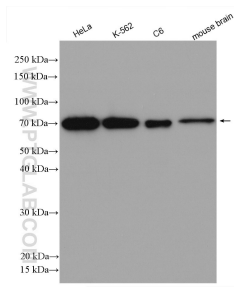
For technical support and original validation data for this product please contact:

T: 1 (888) 4PTGLAB (1-888-478-4522) (toll free in USA), or 1(312) 455-8498 (outside USA)

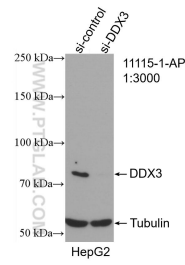
E: proteintech@ptglab.com
W: ptglab.com

This product is exclusively available under Proteintech Group brand and is not available to purchase from any other manufacturer.

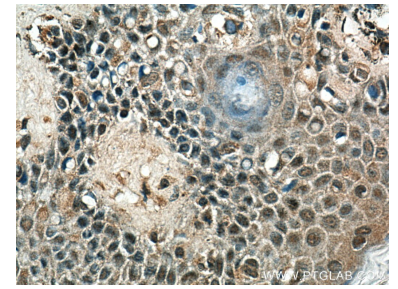
Données de validation sélectionnées



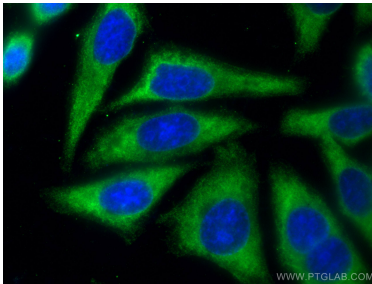
Various lysates were subjected to SDS PAGE followed by western blot with 11115-1-AP (DDX3 antibody) at dilution of 1:4000 incubated at room temperature for 1.5 hours.



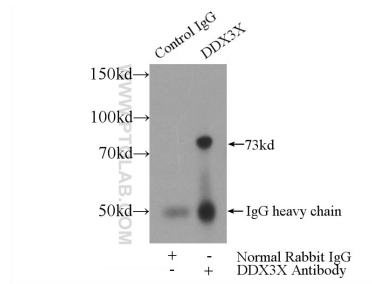
WB result of DDX3 antibody (11115-1-AP; 1:3000; incubated at room temperature for 1.5 hours) with sh-Control and sh-DDX3 transfected HepG2 cells.



Immunohistochemical analysis of paraffin-embedded human malignant melanoma tissue slide using 11115-1-AP (DDX3 antibody) at dilution of 1:200 (under 40x lens)..



Immunofluorescent analysis of (-20°C Ethanol) fixed HepG2 cells using DDX3 antibody (11115-1-AP) at dilution of 1:400 and CoraLite®488-Conjugated AffiniPure Goat Anti-Rabbit IgG(H+L).



IP Result of anti-DDX3 (IP:11115-1-AP, 4ug; Detection:11115-1-AP 1:300) with HeLa cells lysate 2480ug.