

À des fins de recherche uniquement

# Anticorps Polyclonal de lapin anti-CD27



Numéro de catalogue: 11121-1-AP

## Informations de base

Numéro de catalogue:  
11121-1-AP

Taille:  
150ul , Concentration: 247 µg/ml by  
Bradford method using BSA as the  
standard;

Hôte:  
Lapin

Isotype:  
IgG

Immunogen Catalog Number:  
AG1582

Numéro d'acquisition GenBank:  
BC012160

Identification du gène (NCBI):  
939

Nom complet:  
CD27 molecule

MW calculé  
29 kDa

MW observés:  
45-50 kDa

Méthode de purification:  
Purification par affinité contre  
l'antigène

Dilutions recommandées:  
WB 1:500-1:1000

## Applications

Applications testées:  
FC, WB, ELISA

Spécificité de l'espèce:  
Humain

Contrôles positifs:

WB : cellules Raji,

## Informations générales

CD27 (also known as TNFRSF7) is a type I glycoprotein expressed on some B cells and the majority of T cells, and is a member of the tumor necrosis factor (TNF) receptor family. CD27 is required for generation and long-term maintenance of T cell immunity (PMID: 11062504). It is a receptor for CD70 (CD27L). Ligation of CD27 by CD70 induces strong ubiquitination of TRAF and the activation of both canonical and non-canonical NF-kappaB pathways, as well as the JNK pathway (PMID: 19426224). CD27 may also play a role in apoptosis through association with SIVA1.

## Stockage

Stockage:

Stocker à -20°C. Stable pendant un an après l'expédition.

Tampon de stockage:

PBS avec azoture de sodium à 0,02 % et glycérol à 50 % pH 7,3

L'aliquotage n'est pas nécessaire pour le stockage à -20C

\*\*\* Les 20ul contiennent 0,1% de BSA.

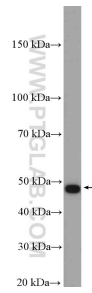
For technical support and original validation data for this product please contact:

T: 1 (888) 4PTGLAB (1-888-478-4522) (toll free  
in USA), or 1(312) 455-8498 (outside USA)

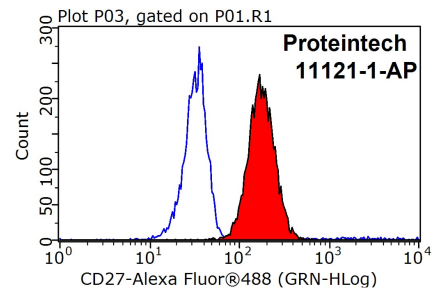
E: proteintech@ptglab.com  
W: ptglab.com

This product is exclusively available under Proteintech Group brand and is not available to purchase from any other manufacturer.

## Données de validation sélectionnées



Raji cells were subjected to SDS PAGE followed by western blot with 11121-1-AP (CD27 antibody) at dilution of 1:600 incubated at room temperature for 1.5 hours.



$1 \times 10^6$  Raji cells were stained with 0.2ug CD27 antibody (11121-1-AP, red) and control antibody (blue). Fixed with 90% MeOH blocked with 3% BSA (30 min). Alexa Fluor 488-conjugated AffiniPure Goat Anti-Rabbit IgG(H+L) with dilution 1:1000.