

À des fins de recherche uniquement

# Anticorps Polyclonal de lapin anti-MYH9



Numéro de catalogue: 11128-1-AP

Phare

22 Publications

## Informations de base

Numéro de catalogue:

11128-1-AP

Taille:

150ul, Concentration: 900 µg/ml by Nanodrop;

Hôte:

Lapin

Isotype:

IgG

Immunogen Catalog Number:

AG1612

Numéro d'acquisition GenBank:

BC011915

Identification du gène (NCBI):

4627

Nom complet:

myosin, heavy chain 9, non-muscle

MW calculé

227 kDa

MW observés:

224 kDa

Méthode de purification:

Purification par affinité contre l'antigène

Dilutions recommandées:

WB 1:5000-1:50000

IP 0.5-4.0 µg for IP and 1:500-1:2000 for WB

IHC 1:50-1:500

IF 1:50-1:500

## Applications

Applications testées:

FC, IF, IHC, IP, WB, ELISA

Demandes citées:

CoIP, IF, IHC, IP, WB

Spécificité de l'espèce:

Humain, rat, souris

Espèces citées:

Humain, rat, souris

**Remarque-IHC: il est suggéré de démasquer l'antigène avec un tampon de TE buffer pH 9,0; (\*) À défaut, le démasquage de l'antigène peut être effectué avec un tampon citrate pH 6,0.**

Contrôles positifs:

WB : cellules A549, cellules U2OS, tissu cérébral de souris, tissu cérébral humain, tissu de côlon de souris, tissu rénal de souris

IP : tissu cérébral de souris,

IHC : tissu de cancer du poumon humain, tissu rénal de souris, tissu rénal humain

IF : tissu d'intestin grêle de souris, cellules HepG2

## Informations générales

MYH9 (Myosin-9) appears to play a role in cytokinesis, cell shape, and specialized functions such as secretion and capping. MYH9 is a hexameric protein that consists of two heavy chains (~200 kDa) and two pairs of non-identical light chains (15-22 kDa), a pair of essential or alkali light chains, and a pair of regulatory light chains (PMID: 12800156).

## Publications notables

Autrice	Pubmed ID	Journal	Application
Peiyuan Li	34586803	J Agric Food Chem	WB
Yang Cao	30336116	Exp Cell Res	WB,IP,IF
Ru Zheng	27742864	Reproduction	IHC

## Stockage

Stockage:

Stocker à -20°C. Stable pendant un an après l'expédition.

Tampon de stockage:

PBS avec azoture de sodium à 0,02 % et glycérol à 50 % pH 7,3

L'aliquotage n'est pas nécessaire pour le stockage à -20C

\*\*\* Les 20ul contiennent 0,1% de BSA.

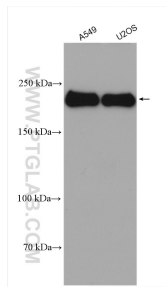
For technical support and original validation data for this product please contact:

T: 1 (888) 4PTGLAB (1-888-478-4522) (toll free in USA), or 1(312) 455-8498 (outside USA)

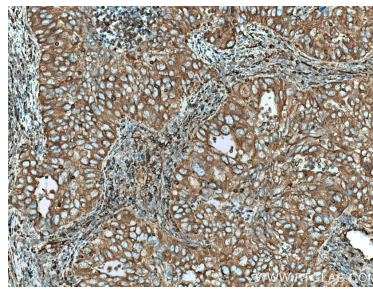
E: [proteintech@ptglab.com](mailto:proteintech@ptglab.com)  
W: [ptglab.com](http://ptglab.com)

This product is exclusively available under Proteintech Group brand and is not available to purchase from any other manufacturer.

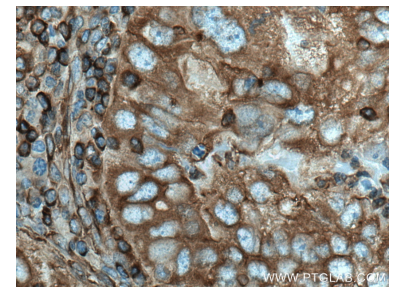
## Données de validation sélectionnées



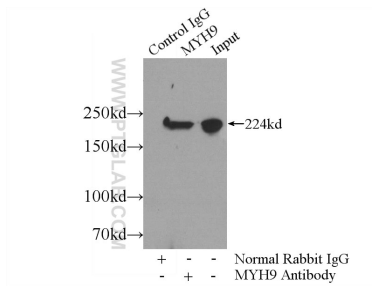
Various cell lysates were subjected to SDS PAGE followed by western blot with 11128-1-AP (MYH9 antibody) at dilution of 1:10000 incubated at room temperature for 1.5 hours.



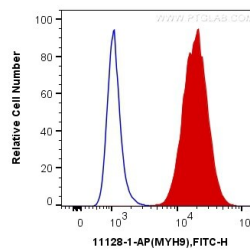
Immunohistochemical analysis of paraffin-embedded human lung cancer tissue slide using 11128-1-AP (MYH9 antibody) at dilution of 1:200 (under 10x lens). Heat mediated antigen retrieval with Tris-EDTA buffer (pH 9.0).



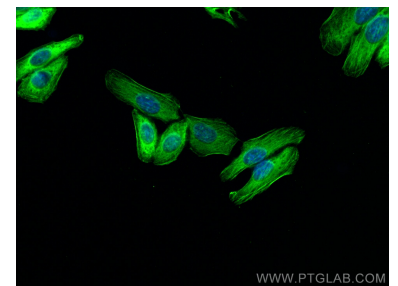
Immunohistochemical analysis of paraffin-embedded human lung cancer tissue slide using 11128-1-AP (MYH9 antibody) at dilution of 1:200 (under 40x lens). Heat mediated antigen retrieval with Tris-EDTA buffer (pH 9.0).



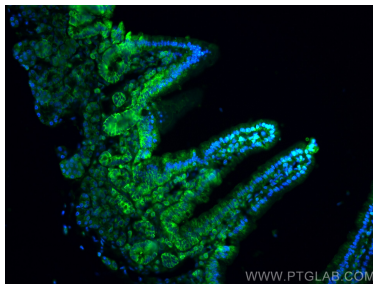
IP Result of anti-MYH9 (IP:11128-1-AP, 5ug; Detection:11128-1-AP 1:1000) with mouse brain tissue lysate 4000ug.



$1 \times 10^6$  HepG2 cells were intracellularly stained with 0.2 ug Anti-Human MYH9 (11128-1-AP) and Fluorescein (FITC)-conjugated Affinipure Goat Anti-Rabbit IgG(H+L) at dilution 1:200 (red), or 0.2 ug Control Antibody. Cells were fixed with 90% MeOH.



Immunofluorescent analysis of (-20°C Ethanol) fixed HepG2 cells using MYH9 antibody (11128-1-AP) at dilution of 1:200 and CoraLite@488-Conjugated AffiniPure Goat Anti-Rabbit IgG(H+L).



Immunofluorescent analysis of (4% PFA) fixed mouse small intestine tissue using MYH9 antibody (11128-1-AP) at dilution of 1:200 and CoraLite@488-Conjugated AffiniPure Goat Anti-Rabbit IgG(H+L).