

À des fins de recherche uniquement

Anticorps Polyclonal de lapin anti-P2RX7



Numéro de catalogue: 11144-1-AP

14 Publications

Informations de base

Numéro de catalogue:

11144-1-AP

Taille:

150ul, Concentration: 147 µg/ml by Bradford method using BSA as the standard;

Hôte:

Lapin

Isotype:

IgG

Immunogen Catalog Number:

AG1600

Numéro d'acquisition GenBank:

BC011913

Identification du gène (NCBI):

5027

Nom complet:

purinergic receptor P2X, ligand-gated ion channel, 7

MW calculé

69 kDa

Méthode de purification:

Purification par affinité contre l'antigène

Dilutions recommandées:

IHC 1:20-1:200

IF 1:20-1:200

Applications

Applications testées:

FC, IF, IHC, ELISA

Demandes citées:

IF, IHC, WB

Spécificité de l'espèce:

Humain, rat, souris

Espèces citées:

Humain, rat, souris

Remarque-IHC: il est suggéré de démasquer l'antigène avec un tampon de TE buffer pH 9,0; (*) A défaut, 'le démasquage de l'antigène peut être effectué avec un tampon citrate pH 6,0.

Contrôles positifs:

IHC : tissu de cancer de la prostate humain, tissu d'amygdalite humain

IF : cellules HeLa,

Informations générales

Nucleotides, the structural subunits of the nucleic acids, are also important extracellular signaling molecules. P2 receptors are a family of cell surface receptors that mediate a wide variety of physiologic effects in response to extracellular nucleotides. These receptors fall into two classes: P2X receptors, which are ligand-gated ion channels that mediate calcium and potassium fluxes in response to ATP, and P2Y receptors, which are G protein-coupled receptors (GPCRs) (PMID: 21724990). P2RX7 functions as a ligand-gated ion channel and is responsible for ATP-dependent lysis of macrophages through the formation of membrane pores permeable to large molecules. P2RX7 is highly expressed by cells of the haemopoietic lineage and can mediate cell death, killing of infectious organisms, and regulation of the inflammatory response (PMID: 22102807).

Publications notables

Autrice	Pubmed ID	Journal	Application
Baochang Qi	27716441	J Exp Clin Cancer Res	IF
Wen-Jun Su	30483062	Front Cell Neurosci	WB
Qingkai Zhang	30542707	Oncol Rep	WB

Stockage

Stockage:

Stocker à -20°C. Stable pendant un an après l'expédition.

Tampon de stockage:

PBS avec azoture de sodium à 0,02 % et glycérol à 50 % pH 7,3

L'aliquotage n'est pas nécessaire pour le stockage à -20C

*** Les 20ul contiennent 0,1% de BSA.

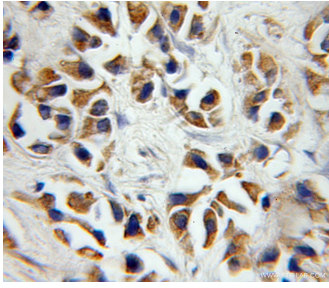
For technical support and original validation data for this product please contact:

T: 1 (888) 4PTGLAB (1-888-478-4522) (toll free in USA), or 1(312) 455-8498 (outside USA)

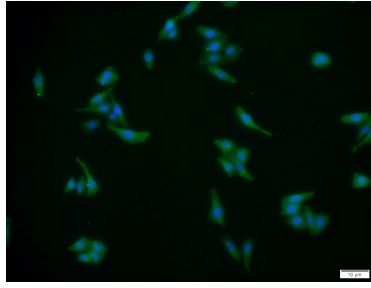
E: proteintech@ptglab.com
W: ptglab.com

This product is exclusively available under Proteintech Group brand and is not available to purchase from any other manufacturer.

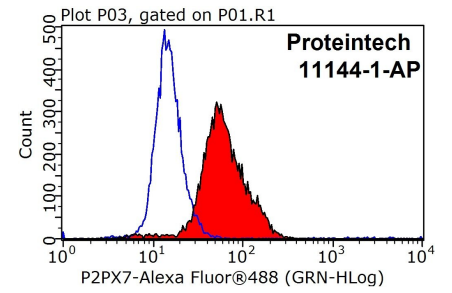
Données de validation sélectionnées



Immunohistochemical analysis of paraffin-embedded human prostate cancer using 11144-1-AP (P2RX7 antibody) at dilution of 1:50 (under 40x lens).



Immunofluorescent analysis of HeLa cells using 11144-1-AP (P2RX7 antibody) at dilution of 1:50 and Alexa Fluor 488-conjugated AffiniPure Goat Anti-Rabbit IgG(H+L).



1X10⁶ HeLa cells were stained with 0.2ug P2RX7 antibody (11144-1-AP, red) and control antibody (blue). Fixed with 90% MeOH blocked with 3% BSA (30 min). Alexa Fluor 488-conjugated AffiniPure Goat Anti-Rabbit IgG(H+L) with dilution 1:1000.