

À des fins de recherche uniquement

Anticorps Polyclonal de lapin anti-EIF4E



Numéro de catalogue: 11149-1-AP

Phare

17 Publications

Informations de base

Numéro de catalogue: 11149-1-AP	Numéro d'acquisition GenBank: BC012611	Méthode de purification: Purification par affinité contre l'antigène
Taille: 150ul , Concentration: 500 µg/ml by Nanodrop and 173 µg/ml by Bradford method using BSA as the standard;	Identification du gène (NCBI): 1977	Dilutions recommandées: WB 1:1000-1:4000 IHC 1:20-1:200 IF 1:10-1:100
Hôte: Lapin	Nom complet: eukaryotic translation initiation factor 4E	
Isotype: IgG	MW calculé: 29 kDa	
Immunogen Catalog Number: AG1626	MW observés: 26-29 kDa	

Applications

Applications testées:
FC, IF, IHC, WB, ELISA

Demandes citées:
IF, IHC, WB

Spécificité de l'espèce:
Humain

Espèces citées:
Humain, souris

Remarque-IHC: il est suggéré de démasquer l'antigène avec un tampon de TE buffer pH 9,0; (*) A défaut, 'le démasquage de l'antigène peut être 'effectué avec un tampon citrate pH 6,0.

Contrôles positifs:

WB : cellules HeLa, cellules HEK-293, cellules HEK-293T, cellules HepG2, cellules Jurkat, cellules K-562

IHC : tissu de cancer du sein humain, tissu de gliome humain

IF : cellules HepG2,

Informations générales

Eukaryotic translation initiation factor 4E, also known as eIF4E, is a protein that in humans is encoded by the EIF4E gene. eIF4E is the mRNA cap-binding protein, known as a general initiation factor allowing for mRNA-ribosome interaction and cap-dependent translation in eukaryotic cells. eIF4E is a polypeptide that exists as both a free form and as part of the eIF4F pre-initiation complex. Regulation of eIF4E may be achieved via three distinct mechanisms: transcription, phosphorylation, and inhibitory proteins. This is a rabbit polyclonal antibody raised against the full-length human EIF4E.

Publications notables

Autrice	Pubmed ID	Journal	Application
Yan Sun	34469122	ACS Chem Neurosci	WB
Guan-Nan Li	36097006	Signal Transduct Target Ther	WB
Jing Wang	36298816	Viruses	WB

Stockage

Stockage:
Stocker à -20°C. Stable pendant un an après l'expédition.

Tampon de stockage:
PBS avec azoture de sodium à 0,02 % et glycérol à 50 % pH 7,3
L'aliquotage n'est pas nécessaire pour le stockage à -20C

*** Les 20ul contiennent 0,1% de BSA.

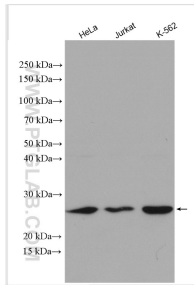
For technical support and original validation data for this product please contact:

T: 1 (888) 4PTGLAB (1-888-478-4522) (toll free in USA), or 1(312) 455-8498 (outside USA)

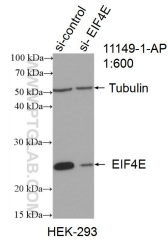
E: proteintech@ptglab.com
W: ptglab.com

This product is exclusively available under Proteintech Group brand and is not available to purchase from any other manufacturer.

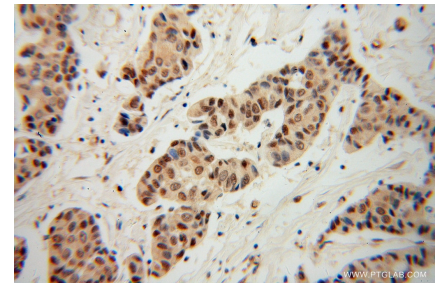
Données de validation sélectionnées



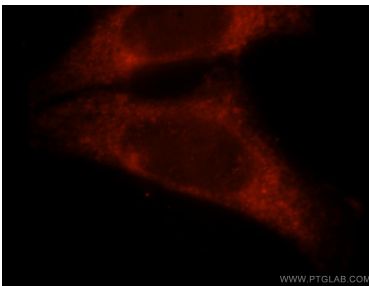
Various lysates were subjected to SDS PAGE followed by western blot with 11149-1-AP (EIF4E antibody) at dilution of 1:2000 incubated at room temperature for 1.5 hours.



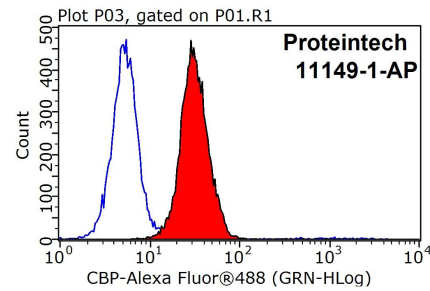
WB result of EIF4E antibody (11149-1-AP; 1:600; incubated at room temperature for 1.5 hours) with sh-Control and sh-EIF4E transfected HEK-293 cells.



Immunohistochemical analysis of paraffin-embedded human breast cancer using 11149-1-AP (EIF4E antibody) at dilution of 1:100 (under 40x lens).



Immunofluorescent analysis of HepG2 cells, using EIF4E antibody 11149-1-AP at 1:25 dilution and Rhodamine-labeled goat anti-rabbit IgG (red).



1X10⁶ HepG2 cells were stained with 0.2ug EIF4E antibody (11149-1-AP, red) and control antibody (blue). Fixed with 90% MeOH blocked with 3% BSA (30 min). Alexa Fluor 488-conjugated AffiniPure Goat Anti-Rabbit IgG(H+L) with dilution 1:1000.