

À des fins de recherche uniquement

# Anticorps Polyclonal de lapin anti-NTHL1



Numéro de catalogue: 11154-1-AP

3 Publications

## Informations de base

Numéro de catalogue:

11154-1-AP

Taille:

150ul, Concentration: 400 µg/ml by Nanodrop and 200 µg/ml by Bradford method using BSA as the standard;

Hôte:

Lapin

Isotype:

IgG

Immunogen Catalog Number:

AG1631

Numéro d'acquisition GenBank:

BC003014

Identification du gène (NCBI):

4913

Nom complet:

nth endonuclease III-like 1 (E. coli)

MW calculé

34 aa, 3 kDa

MW observés:

34 kDa

Méthode de purification:

Purification par affinité contre l'antigène

Dilutions recommandées:

WB 1:1000-1:4000

## Applications

Applications testées:

WB, ELISA

Demandes citées:

IP, WB

Spécificité de l'espèce:

Humain, rat, souris

Espèces citées:

Humain, rat

Contrôles positifs:

WB : cellules HEK-293, cellules HeLa, cellules K-562, tissu cérébral de rat, tissu cérébral humain

## Informations générales

NTHL1, also named as Endonuclease III-like protein 1 or OCTS3, is a 312 amino acid protein, which belongs to the Nth/MutY family. NTHL1 localizes in the nucleus and is widely expressed with highest levels in heart and lowest levels in lung and liver. NTHL1 has both an apurinic and/or apyrimidinic endonuclease activity and a DNA N-glycosylase activity and incises damaged DNA at cytosines, thymines and guanines. NTHL1 acts on a damaged strand, 5' from the damaged site and is required for the repair of both oxidative DNA damage and spontaneous mutagenic lesions.

## Publications notables

Autrice	Pubmed ID	Journal	Application
Elise Vickridge	36186110	NAR Cancer	WB,IP
Kremer Ted MTM	15450125	Respir Res	WB
Catherine E Aiken	30888848	FASEB J	WB

## Stockage

Stockage:

Stocker à -20°C. Stable pendant un an après l'expédition.

Tampon de stockage:

PBS avec azoture de sodium à 0,02 % et glycérol à 50 % pH 7,3

L'aliquotage n'est pas nécessaire pour le stockage à -20C

\*\*\* Les 20ul contiennent 0,1% de BSA.

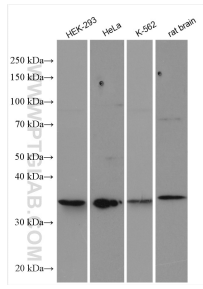
For technical support and original validation data for this product please contact:

T: 1 (888) 4PTGLAB (1-888-478-4522) (toll free in USA), or 1(312) 455-8498 (outside USA)

E: [proteintech@ptglab.com](mailto:proteintech@ptglab.com)  
W: [ptglab.com](http://ptglab.com)

This product is exclusively available under Proteintech Group brand and is not available to purchase from any other manufacturer.

## Données de validation sélectionnées



Various lysates were subjected to SDS PAGE followed by western blot with 11154-1-AP (NTHL1 antibody) at dilution of 1:2000 incubated at room temperature for 1.5 hours.