

À des fins de recherche uniquement

Anticorps Polyclonal de lapin anti-Stathmin 1



Numéro de catalogue: 11157-1-AP

Phare

20 Publications

Informations de base

Numéro de catalogue: 11157-1-AP	Numéro d'acquisition GenBank: BC014353	Méthode de purification: Purification par affinité contre l'antigène
Taille: 150ul , Concentration: 750 µg/ml by Nanodrop;	Identification du gène (NCBI): 3925	Dilutions recommandées: WB 1:1000-1:4000 IHC 1:50-1:500
Hôte: Lapin	Nom complet: stathmin 1/oncoprotein 18	
Isotype: IgG	MW calculé 18 kDa	
Immunogen Catalog Number: AG1633	MW observés: 18 kDa	

Applications

Applications testées:

FC, IHC, WB, ELISA

Demandes citées:

IF, IHC, WB

Spécificité de l'espèce:

Humain

Espèces citées:

Humain, rat, souris

Contrôles positifs:

WB : cellules Jurkat, cellules PC-12

IHC : tissu de gliome humain, tissu de lymphome humain

Remarque-IHC: il est suggéré de démasquer l'antigène avec un tampon de TE buffer pH 9,0; (*) À défaut, le démasquage de l'antigène peut être effectué avec un tampon citrate pH 6,0.

Informations générales

Stathmin 1 (STMN1) normally regulates microtubule dynamics either by sequestering free tubulin heterodimers or by promoting microtubule catastrophe. STMN1 is highly expressed in fetal and adult brain, spinal cord, and cerebellum. Many different phosphorylated forms are observed depending on specific combinations among the sites which can be phosphorylated. Phosphorylation of stathmin is involved in response to NGF, neuron polarization and microtubule polymerization inhibition activity. Increased expression of STMN1 has been observed in a variety of human malignancies, such as colorectal primary tumors and metastatic tissues, but its association with melanoma is so far not well known.

Publications notables

Autrice	Pubmed ID	Journal	Application
Heidi R Fuller	26370173	Mol Cell Neurosci	WB, IHC, IF
Lei Zhao	30202098	Oncogene	WB
Xia-Ying Kuang	26087399	Oncotarget	IHC

Stockage

Stockage:

Stocker à -20°C. Stable pendant un an après l'expédition.

Tampon de stockage:

PBS avec azoture de sodium à 0,02 % et glycérol à 50 % pH 7,3

L'aliquotage n'est pas nécessaire pour le stockage à -20C

*** Les 20ul contiennent 0,1% de BSA.

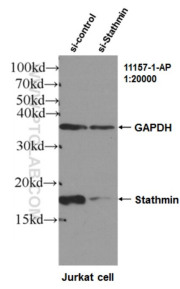
For technical support and original validation data for this product please contact:

T: 1 (888) 4PTGLAB (1-888-478-4522) (toll free in USA), or 1(312) 455-8498 (outside USA)

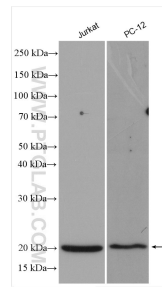
E: proteintech@ptglab.com
W: ptglab.com

This product is exclusively available under Proteintech Group brand and is not available to purchase from any other manufacturer.

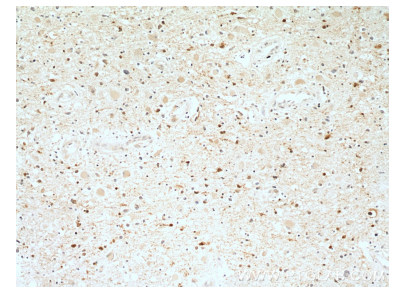
Données de validation sélectionnées



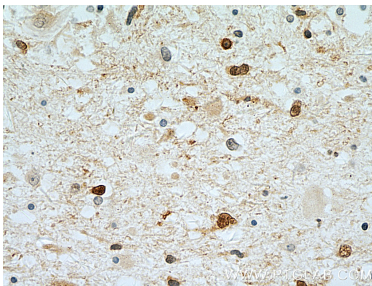
WB results of Stathmin antibody (11157-1-AP, 1:20000) with si-control and si-Stathmin transfected Jurkat cells..



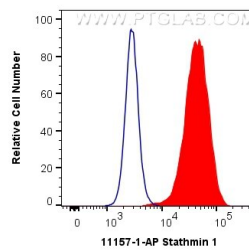
Various lysates were subjected to SDS PAGE followed by western blot with 11157-1-AP (Stathmin 1 antibody) at dilution of 1:2000 incubated at room temperature for 1.5 hours.



Immunohistochemical analysis of paraffin-embedded human gliomas tissue slide using 11157-1-AP (Stathmin 1 antibody at dilution of 1:50 (under 10x lens).



Immunohistochemical analysis of paraffin-embedded human gliomas using 11157-1-AP (Stathmin 1 antibody) at dilution of 1:50 (under 10x lens).



1X10⁶ HeLa cells were intracellularly stained with 0.4 ug Anti-Human Stathmin 1 (11157-1-AP) and CoraLite®488-Conjugated AffiniPure Goat Anti-Rabbit IgG(H+L) at dilution 1:1000 (red), or 0.4 ug Control Antibody. Cells were fixed with 4% PFA and permeabilized with Flow Cytometry Perm Buffer (PF00011-C).