

À des fins de recherche uniquement

Anticorps Polyclonal de lapin anti-EIF3G



Numéro de catalogue: 11165-1-AP

3 Publications

Informations de base

Numéro de catalogue: 11165-1-AP	Numéro d'acquisition GenBank: BC000733	Méthode de purification: Purification par affinité contre l'antigène
Taille: 150ul , Concentration: 700 µg/ml by Nanodrop and 227 µg/ml by Bradford method using BSA as the standard;	Identification du gène (NCBI): 8666	Dilutions recommandées: WB 1:500-1:1000 IHC 1:20-1:200 IF 1:10-1:100
Hôte: Lapin	Nom complet: eukaryotic translation initiation factor 3, subunit G	
Isotype: IgG	MW calculé: 36 kDa	
Immunogen Catalog Number: AG1653	MW observés: 44 kDa	

Applications

Applications testées:

IF, IHC, WB, ELISA

Demandes citées:

IF, WB

Spécificité de l'espèce:

Humain

Espèces citées:

Humain, souris

Remarque-IHC: il est suggéré de démasquer l'antigène avec un tampon de TE buffer pH 9,0; (*) A défaut, 'le démasquage de l'antigène peut être 'effectué avec un tampon citrate pH 6,0.

Contrôles positifs:

WB : cellules HepG2,

IHC : tissu de cancer de la prostate humain,

IF : cellules HepG2, cellules A549

Informations générales

Eukaryotic translation initiation factor eIF3, that plays a central role in translation initiation, consists of five core subunits that are present in both the budding yeast and higher eukaryotes. The EIF-3 complex associates with the 40S ribosome and facilitates the recruitment of eIF-1, eIF-1A, eIF-2:GTP:methionyl-tRNAi and eIF-5 to form the 43S preinitiation complex. The complex stimulates mRNA recruitment to the 43S PIC and scanning of the mRNA for AUG recognition. It is also required for disassembly and recycling of post-termination ribosomal complexes and subsequently prevents premature joining of the 40S and 60S ribosomal subunits prior to initiation. EIF3G is a component of the EIF3 complex. [PMID:20679478,20503360]

Publications notables

Autrice	Pubmed ID	Journal	Application
Jordan M Meyers	34597346	PLoS Pathog	IF
Anaïs Aulas	30425239	Cell Death Dis	IF
Xin Erica Shu	34887587	Nat Chem Biol	WB

Stockage

Stockage:

Stocker à -20°C. Stable pendant un an après l'expédition.

Tampon de stockage:

PBS avec azoture de sodium à 0,02 % et glycérol à 50 % pH 7,3

L'aliquoteage n'est pas nécessaire pour le stockage à -20C

*** Les 20ul contiennent 0,1% de BSA.

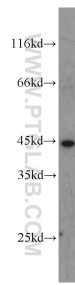
For technical support and original validation data for this product please contact:

T: 1 (888) 4PTGLAB (1-888-478-4522) (toll free in USA), or 1(312) 455-8498 (outside USA)

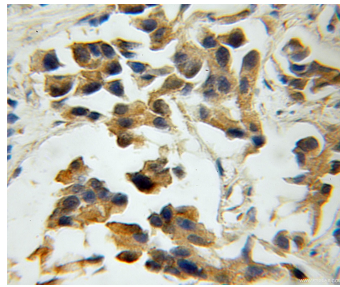
E: proteintech@ptglab.com
W: ptglab.com

This product is exclusively available under Proteintech Group brand and is not available to purchase from any other manufacturer.

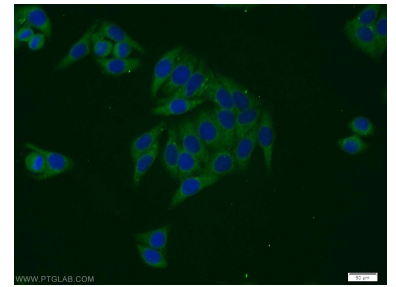
Données de validation sélectionnées



HepG2 cells were subjected to SDS PAGE followed by western blot with 11165-1-AP (EIF3G antibody) at dilution of 1:500 incubated at room temperature for 1.5 hours.



Immunohistochemical analysis of paraffin-embedded human prostate cancer using 11165-1-AP (EIF3G antibody) at dilution of 1:50 (under 10x lens).



Immunofluorescent analysis of HepG2 cells using 11165-1-AP (EIF3G antibody) at dilution of 1:25 and Alexa Fluor 488-conjugated AffiniPure Goat Anti-Rabbit IgG(H+L).