

À des fins de recherche uniquement

Anticorps Polyclonal de lapin anti-EAF2



Numéro de catalogue: 11172-1-AP

Informations de base

Numéro de catalogue: 11172-1-AP	Numéro d'acquisition GenBank: BC014209	Méthode de purification: Purification par affinité contre l'antigène
Taille: 150ul , Concentration: 750 µg/ml by Nanodrop and 400 µg/ml by Bradford method using BSA as the standard;	Identification du gène (NCBI): 55840	Dilutions recommandées: WB 1:500-1:2000 IHC 1:50-1:500 IF 1:20-1:200
Hôte: Lapin	Nom complet: ELL associated factor 2	
Isotype: IgG	MW calculé 42 kDa	
Immunogen Catalog Number: AG1637	MW observés: 45 kDa	

Applications

Applications testées: IF, IHC, WB, ELISA	Contrôles positifs: WB : cellules HEK-293, tissu rénal de souris IHC : tissu de cancer du sein humain, IF : cellules HepG2,
Spécificité de l'espèce: Humain, rat, souris	
Remarque-IHC: il est suggéré de démasquer l'antigène avec un tampon de TE buffer pH 9.0; (*) À défaut, 'le démasquage de l'antigène peut être 'effectué avec un tampon citrate pH 6,0.	

Informations générales

ELL associated factor 1 and ELL associated factor 2 (EAF1/2 factors) are reported to play important roles in tumor suppression and embryogenesis. The tumor suppressor EAF2 is regulated by androgen signaling and associated with prostate cancer. Eaf factors have been revealed to modulate mesoderm and neural patterning by inhibiting canonical Wnt signaling, and high activity of canonical Wnt/ β -catenin is revealed in eafs morphants (PMID: 23364330). Catalog# 11172-1-AP is a rabbit polyclonal antibody raised against the full-length of human EAF2.

Stockage

Stockage:
Stocker à -20°C. Stable pendant un an après l'expédition.
Tampon de stockage:
PBS avec azoture de sodium à 0,02 % et glycérol à 50 % pH 7,3
L'aliquotage n'est pas nécessaire pour le stockage à -20C

*** Les 20ul contiennent 0,1% de BSA.

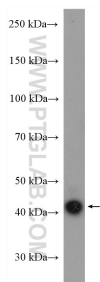
For technical support and original validation data for this product please contact:

T: 1 (888) 4PTGLAB (1-888-478-4522) (toll free in USA), or 1(312) 455-8498 (outside USA)

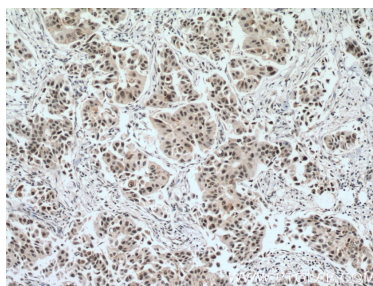
E: proteintech@ptglab.com
W: ptglab.com

This product is exclusively available under Proteintech Group brand and is not available to purchase from any other manufacturer.

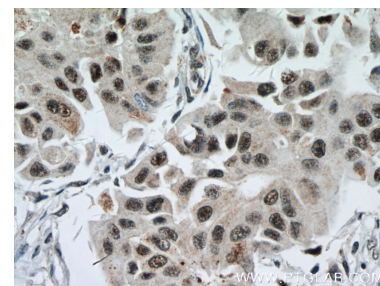
Données de validation sélectionnées



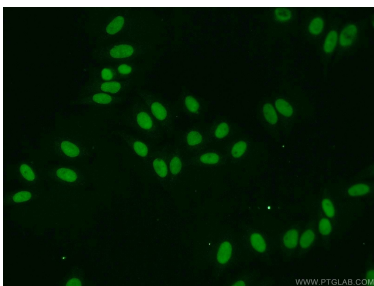
HEK-293 cells were subjected to SDS PAGE followed by western blot with 11172-1-AP (EAF2 antibody) at dilution of 1:1000 incubated at room temperature for 1.5 hours.



Immunohistochemical analysis of paraffin-embedded human breast cancer tissue slide using 11172-1-AP (EAF2 antibody) at dilution of 1:200 (under 10x lens. Heat mediated antigen retrieval with Tris-EDTA buffer (pH 9.0).



Immunohistochemical analysis of paraffin-embedded human breast cancer tissue slide using 11172-1-AP (EAF2 antibody) at dilution of 1:200 (under 40x lens. Heat mediated antigen retrieval with Tris-EDTA buffer (pH 9.0).



Immunofluorescent analysis of HepG2 cells using 11172-1-AP (EAF2 antibody) at dilution of 1:50 and Alexa Fluor 488-conjugated AffiniPure Goat Anti-Rabbit IgG(H+L).