

À des fins de recherche uniquement

Anticorps Polyclonal de lapin anti-FKBP8



Numéro de catalogue: 11173-1-AP

Phare

4 Publications

Informations de base

Numéro de catalogue:

11173-1-AP

Taille:

150ul, Concentration: 300 µg/ml by Nanodrop and 133 µg/ml by Bradford method using BSA as the standard;

Hôte:

Lapin

Isotype:

IgG

Immunogen Catalog Number:

AG1649

Numéro d'acquisition GenBank:

BC009966

Identification du gène (NCBI):

23770

Nom complet:

FK506 binding protein 8, 38kDa

MW calculé

45 kDa

MW observés:

53 kDa

Méthode de purification:

Purification par affinité contre l'antigène

Dilutions recommandées:

WB 1:500-1:1000

IP 0.5-4.0 ug for IP and 1:500-1:1000 for WB

IF 1:10-1:100

Applications

Applications testées:

IF, IP, WB, ELISA

Demandes citées:

IF, IP, WB

Spécificité de l'espèce:

Humain, souris

Espèces citées:

Humain, rat, souris

Contrôles positifs:

WB : cellules HEK-293, cellules HeLa, cellules Jurkat, cellules SH-SY5Y, tissu cérébral de souris, tissu hépatique de souris, tissu pancréatique de souris

IP : cellules HeLa,

IF : cellules SH-SY5Y,

Informations générales

FK506 binding protein 8 (FKBP8), is a member of the immunophilin protein family, which play a role in immunoregulation and basic cellular processes involving protein folding and trafficking. FKBP8 does not seem to have PPIase/rotamase activity, which is different from other members of this family. The active form of FKBP8 may play a role in the regulation of apoptosis. FKBP8 has 3 isoforms produced by alternative splicing.

Publications notables

Autrice	Pubmed ID	Journal	Application
Suli Lv	36185457	Front Bioeng Biotechnol	
Girish R Mali	29916806	Elife	WB,IP
Dennis G Drescher	36902136	Int J Mol Sci	IF

Stockage

Stockage:

Stocker à -20°C. Stable pendant un an après l'expédition.

Tampon de stockage:

PBS avec azoture de sodium à 0,02 % et glycérol à 50 % pH 7,3

L'aliquotage n'est pas nécessaire pour le stockage à -20C

*** Les 20ul contiennent 0,1% de BSA.

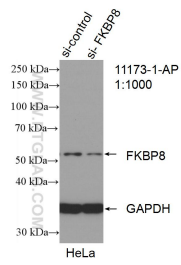
For technical support and original validation data for this product please contact:

T: 1 (888) 4PTGLAB (1-888-478-4522) (toll free in USA), or 1(312) 455-8498 (outside USA)

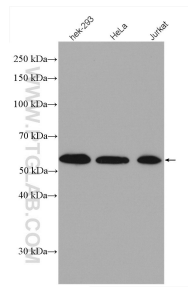
E: proteintech@ptglab.com
W: ptglab.com

This product is exclusively available under Proteintech Group brand and is not available to purchase from any other manufacturer.

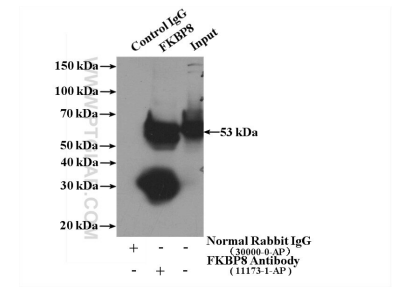
Données de validation sélectionnées



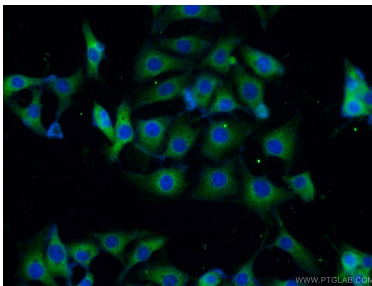
WB result of FKBP8 antibody (11173-1-AP; 1:1000; incubated at room temperature for 1.5 hours) with sh-Control and sh-FKBP8 transfected HeLa cells.



Various lysates were subjected to SDS PAGE followed by western blot with 11173-1-AP (FKBP8 antibody) at dilution of 1:500 incubated at room temperature for 1.5 hours.



IP Result of anti-FKBP8 (IP:11173-1-AP, 4ug; Detection:11173-1-AP 1:500) with HeLa cells lysate 3200ug.



Immunofluorescent analysis of SH-SY5Y cells using 11173-1-AP (FKBP8 antibody) at dilution of 1:25 and Alexa Fluor 488-conjugated AffiniPure Goat Anti-Rabbit IgG(H+L).