

À des fins de recherche uniquement

Anticorps Polyclonal de lapin anti-ALPL



Numéro de catalogue: 11187-1-AP

48 Publications

Informations de base

Numéro de catalogue: 11187-1-AP	Numéro d'acquisition GenBank: BC021289	Méthode de purification: Purification par affinité contre l'antigène
Taille: 150ul , Concentration: 550 µg/ml by Nanodrop;	Identification du gène (NCBI): 249	Dilutions recommandées: WB 1:500-1:2000 IHC 1:50-1:500
Hôte: Lapin	Nom complet: alkaline phosphatase, liver/bone/kidney	
Isotype: IgG	MW calculé: 57 kDa	
Immunogen Catalog Number: AG1664	MW observés: 80 kDa	

Applications

Applications testées:

FC, IHC, WB, ELISA

Demands citées:

chIP, IF, IHC, WB

Spécificité de l'espèce:

Humain

Espèces citées:

Humain

Contrôles positifs:

WB : cellules HeLa,

IHC : tissu de cancer du côlon humain, tissu de cancer du foie humain

Remarque-IHC: il est suggéré de démasquer l'antigène avec un tampon de TE buffer pH 9,0; (*) À défaut, le démasquage de l'antigène peut être effectué avec un tampon citrate pH 6,0.

Informations générales

There are at least four distinct but related alkaline phosphatases: intestinal, placental, placental-like, and liver/bone/kidney (tissue non-specific). The product of this gene is a membrane bound glycosylated enzyme that is not expressed in any particular tissue and is, therefore, referred to as the tissue-nonspecific form of the enzyme. ALPL (Alkaline phosphatase, tissue-nonspecific isozyme) is also named as AP-TNAP, TNSALP and belongs to the alkaline phosphatase family. It can exist as a homodimer with the molecular weight of 140 kDa (PMID:18724009). ALPL was synthesized as a 66-kDa endo-b-N-acetylglucosaminidase H (Endo H)-sensitive form, and processed to an 80-kDa mature form, which is anchored to the plasma membrane via glycosylphosphatidylinositol (GPI) (PMID:10839996). This antibody can bind the four mentioned alkaline phosphatases.

Publications notables

Autrice	Pubmed ID	Journal	Application
Hong Wang	31556140	J Oral Rehabil	IHC
Bo Zhang	33000198	Mol Med Rep	WB
Kim Tak-Heun TH	21854758	Biochem Biophys Res Commun	IHC

Stockage

Stockage:

Stocker à -20°C. Stable pendant un an après l'expédition.

Tampon de stockage:

PBS avec azoture de sodium à 0,02 % et glycérol à 50 % pH 7,3

L'aliquote n'est pas nécessaire pour le stockage à -20C

*** Les 20ul contiennent 0,1% de BSA.

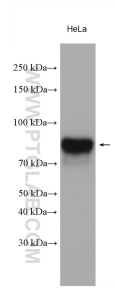
For technical support and original validation data for this product please contact:

T: 1 (888) 4PTGLAB (1-888-478-4522) (toll free in USA), or 1(312) 455-8498 (outside USA)

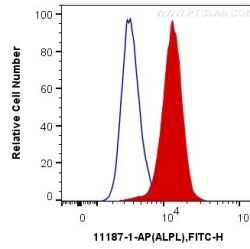
E: proteintech@ptglab.com
W: ptglab.com

This product is exclusively available under Proteintech Group brand and is not available to purchase from any other manufacturer.

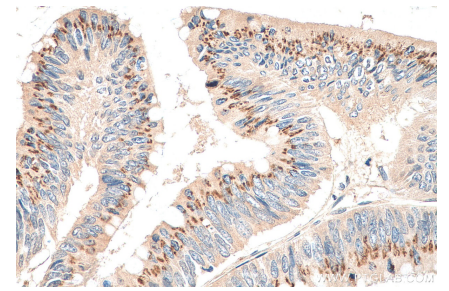
Données de validation sélectionnées



HeLa cells were subjected to SDS PAGE followed by western blot with 11187-1-AP (ALPL antibody) at dilution of 1:1000 incubated at room temperature for 1.5 hours.



1×10^6 HeLa cells were intracellularly stained with 0.2 μ g Anti-Human ALPL (11187-1-AP) and CoraLite®488-Conjugated AffiniPure Goat Anti-Rabbit IgG(H+L) at dilution 1:1000 (red), or 0.2 μ g Control Antibody. Cells were fixed with 4% PFA and permeabilized with Flow Cytometry Perm Buffer (PF00011-C).



Immunohistochemical analysis of paraffin-embedded human colon cancer tissue slide using 11187-1-AP (ALPL antibody) at dilution of 1:200 (under 40x lens). Heat mediated antigen retrieval with Tris-EDTA buffer (pH 9.0).