

À des fins de recherche uniquement

Anticorps Polyclonal de lapin anti-ORM1/2



Numéro de catalogue: 11199-1-AP

3 Publications

Informations de base

Numéro de catalogue:
11199-1-AP

Taille:
150ul, Concentration: 550 µg/ml by Nanodrop and 447 µg/ml by Bradford method using BSA as the standard;

Hôte:
Lapin

Isotype:
IgG

Immunogen Catalog Number:
AG1667

Numéro d'acquisition GenBank:
BC015964

Identification du gène (NCBI):
5005

Nom complet:
orosomucoïd 2

MW calculé
24 kDa

MW observés:
24-28 kDa

Méthode de purification:

Purification par affinité contre l'antigène

Dilutions recommandées:

WB 1:500-1:1000
IP 0.5-4.0 ug for IP and 1:500-1:1000 for WB
IHC 1:50-1:500
IF 1:10-1:100

Applications

Applications testées:

IF, IHC, IP, WB, ELISA

Demandes citées:

WB

Spécificité de l'espèce:

Humain, souris

Espèces citées:

Humain, souris

Remarque-IHC: il est suggéré de démasquer l'antigène avec un tampon de TE buffer pH 9,0; (*) À défaut, 'le démasquage de l'antigène peut être 'effectué avec un tampon citrate pH 6,0.

Contrôles positifs:

WB : cellules L02, cellules A549, tissu hépatique de souris

IP : cellules L02,

IHC : tissu hépatique humain,

IF : cellules HeLa,

Informations générales

ORM2, also named as AGP2 and OMD 2, belongs to the calycin superfamily and Lipocalin family. It functions as transport protein in the blood stream. ORM2 binds various hydrophobic ligands in the interior of its beta-barrel domain. It also binds synthetic drugs and influences their distribution and availability. ORM2 appears to function in modulating the activity of the immune system during the acute-phase reaction. ORM2 is one of the conserved endoplasmic reticulum membrane proteins which regulating lipid homeostasis and protein quality control. This antibody can recognize both ORM1 and ORM2.

Publications notables

| Autrice | Pubmed ID | Journal | Application |
|-----------------|-----------|----------------|-------------|
| Kang Un-Beom UB | 20346108 | BMC Cancer | WB |
| Kyle Lewis | 28559429 | Mol Cell Biol | WB |
| Leila Valanejad | 28535186 | Carcinogenesis | |

Stockage

Stockage:

Stocker à -20°C. Stable pendant un an après l'expédition.

Tampon de stockage:

PBS avec azoture de sodium à 0,02 % et glycérol à 50 % pH 7,3

L'aliquotage n'est pas nécessaire pour le stockage à -20C

*** Les 20ul contiennent 0,1% de BSA.

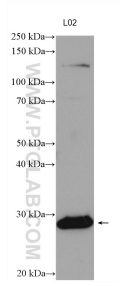
For technical support and original validation data for this product please contact:

T: 1 (888) 4PTGLAB (1-888-478-4522) (toll free in USA), or 1(312) 455-8498 (outside USA)

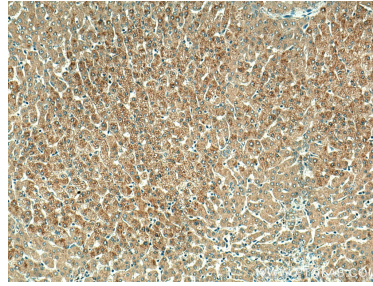
E: proteintech@ptglab.com
W: ptglab.com

This product is exclusively available under Proteintech Group brand and is not available to purchase from any other manufacturer.

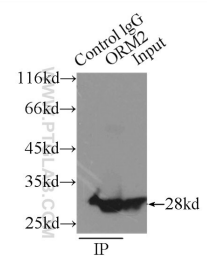
Données de validation sélectionnées



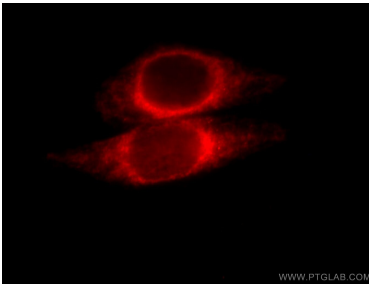
L02 cells were subjected to SDS PAGE followed by western blot with 11199-1-AP (ORM2 antibody) at dilution of 1:800 incubated at room temperature for 1.5 hours.



Immunohistochemical analysis of paraffin-embedded human liver tissue slide using 11199-1-AP (ORM1/2 antibody) at dilution of 1:200 (under 10x lens). Heat mediated antigen retrieval with Tris-EDTA buffer (pH 9.0).



IP Result of anti-ORM2 (IP:11199-1-AP, 3ug; Detection:11199-1-AP 1:800) with L02 cells lysate 2500ug.



Immunofluorescent analysis of HeLa cells, using ORM2 antibody 11199-1-AP at 1:25 dilution and Rhodamine-labeled goat anti-rabbit IgG (red).