

À des fins de recherche uniquement

# Anticorps Polyclonal de lapin anti-BAP31



Numéro de catalogue: 11200-1-AP

Phare

16 Publications

## Informations de base

Numéro de catalogue:  
11200-1-AP

Taille:  
150ul, Concentration: 400 µg/ml by Nanodrop and 240 µg/ml by Bradford method using BSA as the standard;

Hôte:  
Lapin

Isotype:  
IgG

Immunogen Catalog Number:  
AG1668

Numéro d'acquisition GenBank:  
BC014323

Identification du gène (NCBI):  
10134

Nom complet:  
B-cell receptor-associated protein 31

MW calculé  
28 kDa

MW observés:  
28 kDa

Méthode de purification:  
Purification par affinité contre l'antigène

Dilutions recommandées:  
WB 1:5000-1:50000  
IP 0.5-4.0 ug for IP and 1:500-1:2000 for WB  
IHC 1:50-1:500  
IF 1:50-1:500

## Applications

Applications testées:  
FC, IF, IHC, IP, WB, ELISA

Demandes citées:  
IF, IP, WB

Spécificité de l'espèce:  
Humain, rat, souris

Espèces citées:  
Humain, rat, souris

**Remarque-IHC: il est suggéré de démasquer l'antigène avec un tampon de TE buffer pH 9,0; (\*) A défaut, 'le démasquage de l'antigène peut être 'effectué avec un tampon citrate pH 6,0.**

Contrôles positifs:

WB : cellules A431, cellules HEK-293, cellules HeLa, cellules MCF-7, cellules THP-1, tissu cérébral de rat, tissu cérébral de souris, tissu hépatique de souris, tissu placentaire de souris, tissu placentaire humain

IP : cellules A431,

IHC : tissu de cancer du sein humain, tissu de cancer du côlon humain

IF : cellules HeLa,

## Informations générales

BAP31 is a chaperone protein that is abundant in the endoplasmic reticulum (ER). BAP31 plays a role in the export of secreted proteins in the ER, the recognition of abnormally folded protein and their targeting to the ER associated-degradation (ERAD). It also serves as a cargo receptor for the export of transmembrane proteins. BAP31 may be involved in apoptosis.

## Publications notables

| Autrice            | Pubmed ID | Journal                 | Application |
|--------------------|-----------|-------------------------|-------------|
| Guo-Xun Li         | 36210579  | Int J Biochem Cell Biol | WB          |
| Shiya Cheng        | 36264786  | Science                 | IF          |
| Chengfeng Merriman | 31591269  | J Biol Chem             | WB,IF       |

## Stockage

Stockage:

Stocker à -20°C. Stable pendant un an après l'expédition.

Tampon de stockage:

PBS avec azoture de sodium à 0,02 % et glycérol à 50 % pH 7,3

L'aliquotage n'est pas nécessaire pour le stockage à -20C

\*\*\* Les 20ul contiennent 0,1% de BSA.

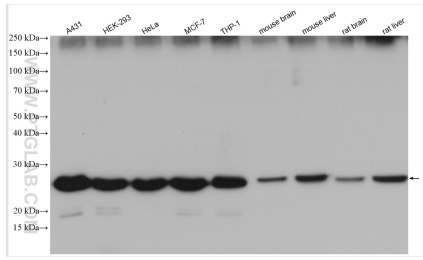
For technical support and original validation data for this product please contact:

T: 1 (888) 4PTGLAB (1-888-478-4522) (toll free in USA), or 1(312) 455-8498 (outside USA)

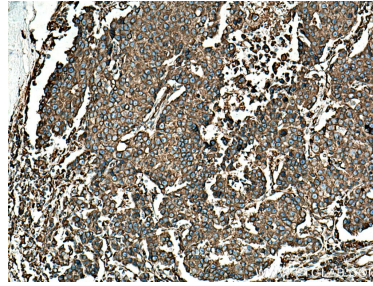
E: proteintech@ptglab.com  
W: ptglab.com

This product is exclusively available under Proteintech Group brand and is not available to purchase from any other manufacturer.

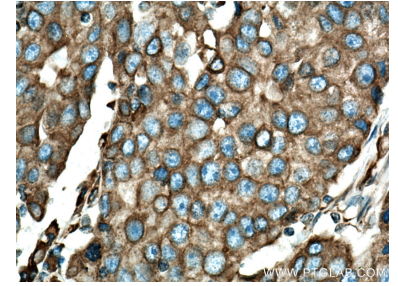
## Données de validation sélectionnées



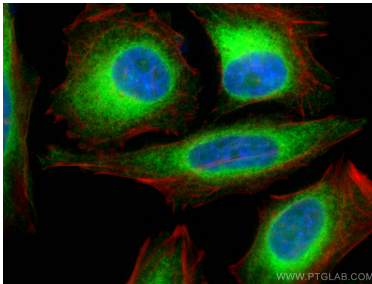
Various lysates were subjected to SDS PAGE followed by western blot with 11200-1-AP (BAP31 antibody) at dilution of 1:20000 incubated at room temperature for 1.5 hours.



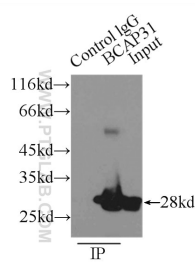
Immunohistochemical analysis of paraffin-embedded human breast cancer tissue slide using 11200-1-AP (BAP31 antibody) at dilution of 1:200 (under 10x lens). Heat mediated antigen retrieval with Tris-EDTA buffer (pH 9.0).



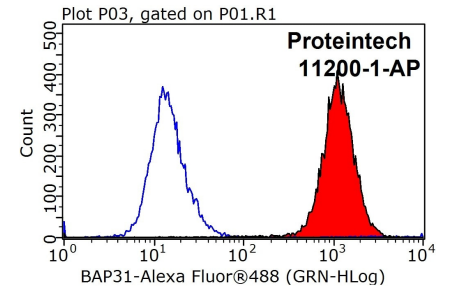
Immunohistochemical analysis of paraffin-embedded human breast cancer tissue slide using 11200-1-AP (BAP31 antibody) at dilution of 1:200 (under 40x lens). Heat mediated antigen retrieval with Tris-EDTA buffer (pH 9.0).



Immunofluorescent analysis of (4% PFA) fixed HeLa cells using BAP31 antibody (11200-1-AP) at dilution of 1:0 and CoraLite@488-Conjugated AffiniPure Goat Anti-Rabbit IgG(H+L), phalloidine stains F-actin (red).



IP Result of anti-BAP31 (IP:11200-1-AP, 3ug; Detection:11200-1-AP 1:1000) with A431 cells lysate 3300ug.



1X10<sup>6</sup> HeLa cells were stained with 0.2ug BAP31 antibody (11200-1-AP, red) and control antibody (blue). Fixed with 90% MeOH blocked with 3% BSA (30 min). Alexa Fluor 488-conjugated AffiniPure Goat Anti-Rabbit IgG(H+L) with dilution 1:1000.