

À des fins de recherche uniquement

Anticorps Polyclonal de lapin anti-CRIPT



Numéro de catalogue: 11211-1-AP

Phare

2 Publications

Informations de base

Numéro de catalogue:

11211-1-AP

Taille:

150ul, Concentration: 900 µg/ml by Nanodrop and 473 µg/ml by Bradford method using BSA as the standard;

Hôte:

Lapin

Isotype:

IgG

Immunogen Catalog Number:

AG1708

Numéro d'acquisition GenBank:

BC018653

Identification du gène (NCBI):

9419

Nom complet:

cysteine-rich PDZ-binding protein

MW calculé

11 kDa

MW observés:

15 kDa

Méthode de purification:

Purification par affinité contre l'antigène

Dilutions recommandées:

WB 1:500-1:1000

IP 0.5-4.0 ug for IP and 1:500-1:1000 for WB

IF 1:20-1:200

Applications

Applications testées:

IF, IP, WB, ELISA

Demandes citées:

CoIP, IP, WB

Spécificité de l'espèce:

Humain, rat, souris

Espèces citées:

rat

Contrôles positifs:

WB : cellules L02,

IP : cellules L02,

IF : cellules L02,

Informations générales

The clustering and immobilization of receptors and ion channels located at specific subcellular sites are believed to be mediated by intracellular proteins that attach these membrane proteins to the cytoskeleton. Receptors and ion channels interact with cytoplasmic proteins, which involved in the modulation or downstream signaling mechanisms of the receptor/ion channel. CRIPT is the protein that binds to the third PDZ (PDZ3) domain of PSD95, which binds to and clusters a variety of membrane proteins, including Shaker-type potassium channel subunits and NMDA receptor NR2 subunits, via its first 2 N-terminal PDZ domains

Publications notables

Autrice	Pubmed ID	Journal	Application
Anton Omelchenko	32157575	Mol Neurobiol	WB,CoIP
Lei Zhang	29218323	eNeuro	WB,IP

Stockage

Stockage:

Stocker à -20°C. Stable pendant un an après l'expédition.

Tampon de stockage:

PBS avec azoture de sodium à 0,02 % et glycérol à 50 % pH 7,3

L'aliquotage n'est pas nécessaire pour le stockage à -20C

*** Les 20ul contiennent 0,1% de BSA.

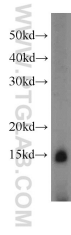
For technical support and original validation data for this product please contact:

T: 1 (888) 4PTGLAB (1-888-478-4522) (toll free in USA), or 1(312) 455-8498 (outside USA)

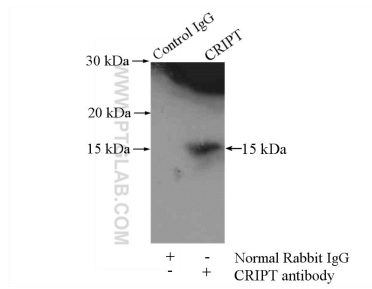
E: proteintech@ptglab.com
W: ptglab.com

This product is exclusively available under Proteintech Group brand and is not available to purchase from any other manufacturer.

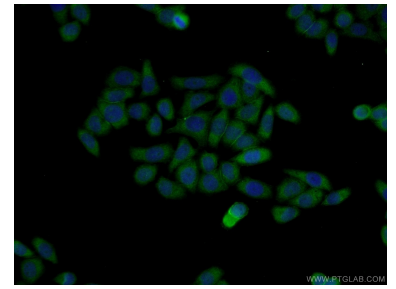
Données de validation sélectionnées



L02 cells were subjected to SDS PAGE followed by western blot with 11211-1-AP (CRIPT antibody) at dilution of 1:500 incubated at room temperature for 1.5 hours.



IP Result of anti-CRIPT (IP:11211-1-AP, 4ug; Detection:11211-1-AP 1:500) with L02 cells lysate 1800ug.



Immunofluorescent analysis of L02 cells using 11211-1-AP (CRIPT antibody) at dilution of 1:50 and Alexa Fluor 488-conjugated AffiniPure Goat Anti-Rabbit IgG(H+L).