

À des fins de recherche uniquement

# Anticorps Polyclonal de lapin anti-ALDOA



Numéro de catalogue: 11217-1-AP

Phare

41 Publications

## Informations de base

Numéro de catalogue:  
11217-1-AP

Taille:  
150ul, Concentration: 450 µg/ml by  
Nanodrop;

Hôte:  
Lapin

Isotype:  
IgG

Immunogen Catalog Number:  
AG1726

Numéro d'acquisition GenBank:  
BC016800

Identification du gène (NCBI):  
226

Nom complet:  
aldolase A, fructose-bisphosphate

MW calculé  
39 kDa

MW observés:  
35-40 kDa

Méthode de purification:  
Purification par affinité contre  
l'antigène

Dilutions recommandées:  
WB 1:5000-1:50000  
IP 0.5-4.0 ug for IP and 1:500-1:2000  
for WB  
IHC 1:100-1:400  
IF 1:50-1:500

## Applications

Applications testées:  
FC, IF, IHC, IP, WB, ELISA

Demandes citées:  
CoIP, IF, IHC, IP, RIP, WB

Spécificité de l'espèce:  
Humain, rat, souris

Espèces citées:  
Humain, porc, rat, souris

**Remarque-IHC: il est suggéré de démasquer l'antigène avec un tampon de TE buffer pH 9,0; (\*) À défaut, le démasquage de l'antigène peut être effectué avec un tampon citrate pH 6,0.**

Contrôles positifs:

WB : cellules HEK-293, cellules A549, cellules HeLa, cellules HepG2, cellules Jurkat, cellules MCF-7, cellules NIH/3T3, tissu hépatique de rat

IP : cellules HepG2,

IHC : tissu de cancer du côlon humain, tissu de cancer du poumon humain, tissu de muscle squelettique humain

IF : cellules HeLa,

## Informations générales

ALDOA (Fructose-bisphosphate aldolase A) is also named as lung cancer antigen NY-LU-1, muscle-type aldolase, ALDA and belongs to the class I fructose-bisphosphate aldolase family. The ALDOA gene encodes a homotetrameric protein (PMID:14615364). It is found in skeletal muscle and red blood cells, and functions in glycolysis, promoting the reversible cleavage of FBP to triose phosphate, G-3-P and DHAP. ALDOA is upregulated in various cancers, including human lung squamous and renal cell carcinomas (PMID:19937139).

## Publications notables

Autrice	Pubmed ID	Journal	Application
Bing Sun	27684953	PLoS One	WB
Menghui Gu	36247245	Am J Transl Res	IHC, WB
Salvador Polo-Genere	36136852	Noncoding RNA	RIP

## Stockage

Stockage:

Stocker à -20°C. Stable pendant un an après l'expédition.

Tampon de stockage:

PBS avec azoture de sodium à 0,02 % et glycérol à 50 % pH 7,3

L'aliquotage n'est pas nécessaire pour le stockage à -20C

\*\*\* Les 20ul contiennent 0,1% de BSA.

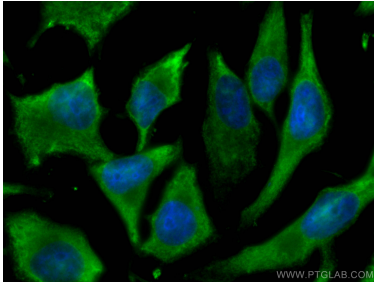
For technical support and original validation data for this product please contact:

T: 1 (888) 4PTGLAB (1-888-478-4522) (toll free in USA), or 1(312) 455-8498 (outside USA)

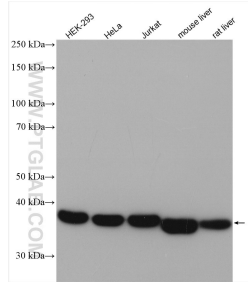
E: proteintech@ptglab.com  
W: ptglab.com

This product is exclusively available under Proteintech Group brand and is not available to purchase from any other manufacturer.

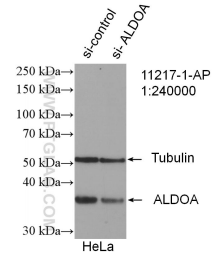
# Données de validation sélectionnées



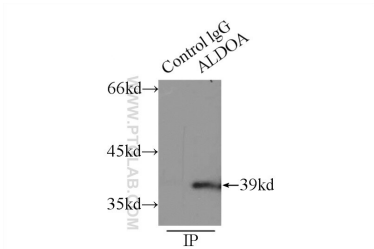
Immunofluorescent analysis of (-20°C Ethanol) fixed HeLa cells using ALDOA antibody (11217-1-AP) at dilution of 1:200 and CoraLite®488-Conjugated AffiniPure Goat Anti-Rabbit IgG(H+L).



Various lysates were subjected to SDS PAGE followed by western blot with 11217-1-AP (ALDOA antibody) at dilution of 1:10000 incubated at room temperature for 1.5 hours.



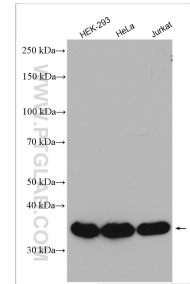
WB result of ALDOA antibody (11217-1-AP; 1:240000; incubated at room temperature for 1.5 hours) with sh-Control and sh-ALDOA transfected HeLa cells.



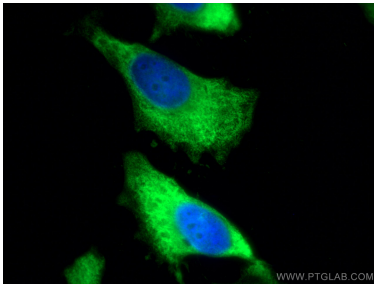
IP Result of anti-ALDOA (IP:11217-1-AP, 3µg; Detection:11217-1-AP 1:1000) with HepG2 cells lysate 6000ug.



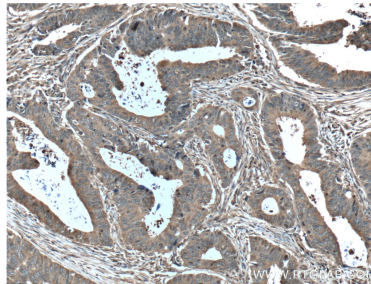
Various lysates were subjected to SDS PAGE followed by western blot with 11217-1-AP (ALDOA antibody) at dilution of 1:10000 incubated at room temperature for 1.5 hours.



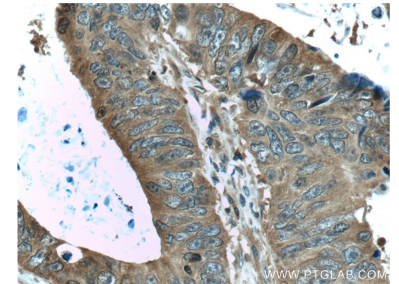
Various lysates were subjected to SDS PAGE followed by western blot with 11217-1-AP (ALDOA antibody) at dilution of 1:8000 incubated at room temperature for 1.5 hours.



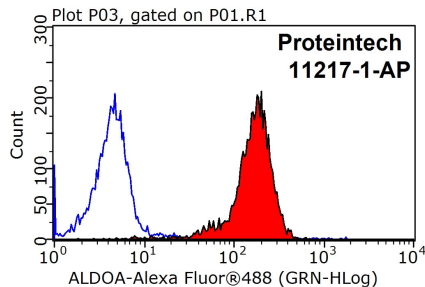
Immunofluorescent analysis of (-20°C Methanol) fixed HeLa cells using ALDOA antibody (11217-1-AP) at dilution of 1:200 and CoraLite®488-Conjugated AffiniPure Goat Anti-Rabbit IgG(H+L).



Immunohistochemical analysis of paraffin-embedded human colon cancer tissue slide using 11217-1-AP (ALDOA Antibody) at dilution of 1:200 (under 10x lens). Heat mediated antigen retrieval with Tris-EDTA buffer (pH 9.0).



Immunohistochemical analysis of paraffin-embedded human colon cancer tissue slide using 11217-1-AP (ALDOA Antibody) at dilution of 1:200 (under 40x lens). Heat mediated antigen retrieval with Tris-EDTA buffer (pH 9.0).



1X10<sup>6</sup> HeLa cells were stained with 0.2ug ALDOA antibody (11217-1-AP, red) and control antibody (blue). Fixed with 90% MeOH blocked with 3% BSA (30 min). Alexa Fluor 488-conjugated AffiniPure Goat Anti-Rabbit IgG(H+L) with dilution 1:1000.