

À des fins de recherche uniquement

Anticorps Polyclonal de lapin anti-MCM7



Numéro de catalogue: 11225-1-AP

14 Publications

Informations de base

Numéro de catalogue:
11225-1-AP

Taille:
150ul, Concentration: 400 µg/ml by Nanodrop and 267 µg/ml by Bradford method using BSA as the standard;

Hôte:
Lapin

Isotype:
IgG

Immunogen Catalog Number:
AG1730

Numéro d'acquisition GenBank:
BC013375

Identification du gène (NCBI):
4176

Nom complet:
minichromosome maintenance complex component 7

MW calculé:
81 kDa

MW observés:
81 kDa

Méthode de purification:
Purification par affinité contre l'antigène

Dilutions recommandées:
WB 1:5000-1:50000
IP 0.5-4.0 ug for IP and 1:1000-1:4000 for WB
IHC 1:50-1:500
IF 1:50-1:500

Applications

Applications testées:
FC, IF, IHC, IP, WB, ELISA

Demandes citées:
CoIP, IHC, WB

Spécificité de l'espèce:
Humain, rat, souris

Espèces citées:
Humain, souris

Remarque-IHC: il est suggéré de démasquer l'antigène avec un tampon de TE buffer pH 9,0; (*) A défaut, 'le démasquage de l'antigène peut être 'effectué avec un tampon citrate pH 6,0.

Contrôles positifs:

WB : cellules HeLa, cellules Jurkat, cellules K-562, cellules MCF-7, cellules NIH/3T3

IP : cellules NIH/3T3,

IHC : tissu de cancer du poumon humain, tissu de lymphome humain

IF : cellules NIH/3T3,

Informations générales

MCM7, also named as CDC47 homolog or P1.1-MCM3, is a 719 amino acid protein, which belongs to the MCM family. MCM7 acts as component of the MCM2-7 complex (MCM complex) which is the putative replicative helicase essential for 'once per cell cycle' DNA replication initiation and elongation in eukaryotic cells. the MCM2-7 complex participates in the pre-replication complex formation and exhibits helicase activity which makes DNA unwind, and resulting in recruitment of DNA polymerases and initiation of DNA replication and elongation [PMID: 29463213]. An immunohistochemical study has shown that MCM7 is increased in HCC. Silencing of MCM7 with shRNA inhibits the malignant behavior of HCC cells via cell cycle arrest and apoptosis [[PMID: 29463213].

Publications notables

Autrice	Pubmed ID	Journal	Application
Liangliang Cao	36133906	Front Mol Biosci	WB
Yi Zhu	30365225	Proteomics Clin Appl	IHC
Qing-Liang Wen	31949617	Int J Clin Exp Pathol	IHC

Stockage

Stockage:

Stocker à -20°C. Stable pendant un an après l'expédition.

Tampon de stockage:

PBS avec azoture de sodium à 0,02 % et glycérol à 50 % pH 7,3

L'aliquotage n'est pas nécessaire pour le stockage à -20C

*** Les 20ul contiennent 0,1% de BSA.

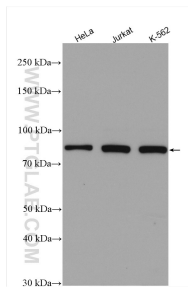
For technical support and original validation data for this product please contact:

T: 1 (888) 4PTGLAB (1-888-478-4522) (toll free in USA), or 1(312) 455-8498 (outside USA)

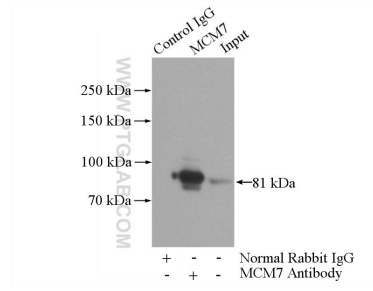
E: proteintech@ptglab.com
W: ptglab.com

This product is exclusively available under Proteintech Group brand and is not available to purchase from any other manufacturer.

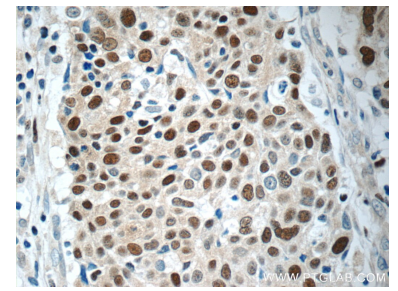
Données de validation sélectionnées



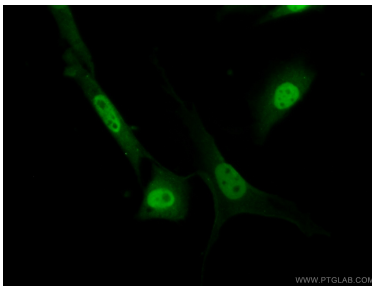
Various lysates were subjected to SDS PAGE followed by western blot with 11225-1-AP (MCM7 antibody) at dilution of 1:10000 incubated at room temperature for 1.5 hours.



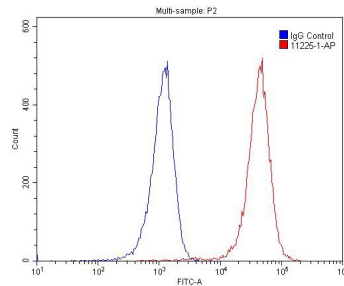
IP Result of anti-MCM7 (IP:11225-1-AP, 4ug; Detection:11225-1-AP 1:2000) with NIH/3T3 cells lysate 1600ug.



Immunohistochemical analysis of paraffin-embedded human lung cancer tissue slide using 11225-1-AP (MCM7 Antibody) at dilution of 1:200 (under 40x lens).



Immunofluorescent analysis of (10% Formaldehyde) fixed NIH/3T3 cells using 11225-1-AP (MCM7 antibody) at dilution of 1:50 and Alexa Fluor 488-conjugated AffiniPure Goat Anti-Rabbit IgG(H+L).



1×10^6 Raji cells were stained with 0.2ug MCM7 antibody (11225-1-AP, red) and control antibody (blue). Alexa Fluor 488-conjugated AffiniPure Goat Anti-Rabbit IgG(H+L) with dilution 1:1500. Cells were fixed with 4% PFA and permeabilized with 0.1% Triton X-100.